

## World Stroke Organization (WSO): Global Stroke Fact Sheet 2025

Journal:	<i>International Journal of Stroke</i>
Manuscript ID	IJS-11-24-12920.R2
Manuscript Type:	Review
Date Submitted by the Author:	26-Nov-2024
Complete List of Authors:	Feigin, Valery; AUT University, National Institute for Stroke & Applied Neurosciences Brainin, Michael; Danube University Krems, Norrving, Bo; Lund University, Department of Clinical Sciences Martins, Sheila; Federal University of Rio Grande do Sul, Neurology Pandian, Jeyaraj; Christian Medical College, Stroke Unit, Department of Neurology Lindsay, Patrice; Heart and Stroke Foundation Canada, Stroke; University of Toronto, THPME Fredin, Gunther, Maria ; World Stroke Organization Rautava, Ilari; Department of Neurosurgery, Helsinki University Hospital, Finland,
Keywords:	Stroke, Stroke prevalence, Risk factors, Prevention, Epidemiology, Acute stroke therapy, Blood pressure, Cerebral Infarction, Cost factors

SCHOLARONE™  
Manuscripts

**World Stroke Organization (WSO): Global Stroke Fact Sheet 2025****Authors:**

Valery L. Feigin,<sup>1</sup> Michael Brainin,<sup>2</sup> Bo Norrving,<sup>3</sup> Sheila O. Martins,<sup>4</sup> Jeyaraj Pandian,<sup>5</sup> Patrice Lindsay,<sup>6</sup> Maria F. Grupper<sup>7</sup> and Ilari Rautalin<sup>1,8</sup>

**Affiliations:**

<sup>1</sup>National Institute for Stroke and Applied Neurosciences, Auckland University of Technology, Auckland, New Zealand

<sup>2</sup>Department of Clinical Neurosciences, Danube University Krems, Austria

<sup>3</sup>Department of Clinical Sciences, Section of Neurology, Lund University; Skåne University Hospital, Lund, Sweden

<sup>4</sup>Department of Neurology, Hospital de Clínicas de Porto Alegre; Universidade Federal do Rio Grande do Sul, Hospital Moinhos de Vento, Porto Alegre, Brazil

<sup>5</sup>Department of Neurology, Christian Medical College, Ludhiana, Punjab, India

<sup>6</sup>Heart and Stroke Foundation of Canada, Toronto, Canada

<sup>7</sup>World Stroke Organization, Geneva, Switzerland

<sup>8</sup>Department of Neurosurgery, Helsinki University Hospital, Helsinki, Finland

**Key words:** stroke, transient ischemic attack, statistics, incidence, prevalence, mortality

**Total Manuscript Word Count:** 4800 words excluding tables, references and declarations

**Figures:** 3

**Tables:** 5 (2546 words)

**Corresponding Author:**

Prof. Valery L. Feigin, MD, PhD, FRSNZ, FAAN  
National Institute for Stroke and Applied Neurosciences  
School of Clinical Sciences  
Faculty of Health and Environmental Sciences  
Auckland University of Technology  
Auckland, New Zealand  
[valery.feigin@aut.ac.nz](mailto:valery.feigin@aut.ac.nz)

## Abstract

Among non-communicable disorders (NCDs), stroke remains the second-leading cause of death and the third-leading cause of death and disability combined (as expressed by disability-adjusted life-years lost - DALYs) in the world. The estimated global cost of stroke is over US\$890 billion (0.66% of the global GDP). From 1990 to 2021, the burden (in terms of the absolute number of cases) increased substantially (70.0% increase in incident strokes, 44.0% deaths from stroke, 86.0% prevalent strokes, and 32% DALYs), with the bulk of the global stroke burden (87.0% of deaths and 89.0% of DALYs) residing in lower-income and lower-middle-income countries (LMIC). Stroke attributable to metabolic risks constituted 69.0% of all strokes, environmental risks constituted 37.0%, and behavioural risks constituted 35.0%. This World Stroke Organisation (WSO) Global Stroke Fact Sheet 2025 provides the most updated information that can be used to inform communication with all internal and external stakeholders; all statistics have been reviewed and approved for use by the WSO Executive Committee as well as leaders from the Global Burden of Disease research group.

## Overview

The most recent Global Burden of Disease (GBD) 2021 stroke burden estimates<sup>1</sup> showed that among non-communicable disorders, stroke remains the second-leading cause of death (about 7 million) and the third-leading cause of death and disability combined (as expressed by disability-adjusted life-years lost – DALYs; over 160 million DALYs) in the world. This is the most comprehensive GBD stroke epidemiology study to date, and showed that the number of people who suffer a stroke, die from, or live with a disability after a stroke has risen substantially worldwide between 1990 and 2021: incident strokes – by 70% (95% UI 66-75), deaths from stroke – by 44% (32-56), and DALYs – by 32% (22-43), with the bulk of the global stroke burden (87.2% of deaths and 89.4% of DALYs) residing in low-income and low-middle-income countries (LMIC). The estimated global cost of stroke is over US\$890 billion (0.66% of the global GDP) per year, and is projected to almost double by 2050.<sup>2</sup>

In 2021, there were 93.8 million (89.0–99.3) prevalent and 11.9 million (10.7–13.2) incident strokes. The study found disparities in stroke burden and risk factors by GBD region, country or territory, and socio-demographic index (SDI), as well as a stagnation in the reduction of incidence from 2015 onwards, and even some increases in the stroke incidence, death, prevalence, and DALY rates in southeast Asia, east Asia, and Oceania, countries with lower SDI, and people younger than 70 years.<sup>1</sup> Globally, ischaemic stroke (IS) constituted 65.3% (62.4–67.7), intracerebral haemorrhage (ICH) constituted 28.8% (28.3–28.8), and subarachnoid haemorrhage (SAH) constituted 5.8% (5.7–6.0) of incident strokes, with the highest proportion of IS in high-income countries (HICs 74.9% [72.3-84.1] vs 63.4% [53.6-71.7] in LMICs) and ICH in LMICs (31.1% [30.2-31.3] vs 17.8% [17.3-17.9] in HICs). The proportion of SAH in HICs (7.3% [7.2–8.3]) was higher than that in all LMICs combined (5.5% [5.4–5.7]). Among incident stroke, 6.5 million (95% UI 5.6 to 7.0; or 52.6% [52.4 to 53.1]) occurred in males and 5.7 million (5.1 to 6.3; or 47.4% [47.3 to 47.6]) in females.

The study also showed that stroke is highly preventable, with 84% of the stroke burden in 2021 attributable to 23 modifiable risk factors, including high blood pressure, air pollution, excess body weight, smoking, and physical inactivity—presenting a public health challenge and an opportunity for action. Whilst from 1990 to 2021 there was a positive trend in the reduction of population-attributable fraction (PAF) of stroke DALYs due to diet high in sodium (-4.6% [-25.1 to 2.8]), smoking (-12.8% [-19.5 to -6.0]), second-hand smoking (-12.8% [-16.5 to -8.8]), diet low in fruits (-13.5% [-16.5 to -9.5]), ambient particulate matter pollution (-20.4% [-27.3 to -12.9]), low ambient temperature (-20.8% [-24.7 to -16.9]),

diet low in fibre (-25.1% [-31.0 to -19.0]), diet low in vegetables (-30.3% [-36.5 to -21.6]), and diet high in processed meat (-40.1% [-45.3 to -33.3]), there were substantial increases in DALYs attributable to high body mass index (BMI; 88.2% [53.4–117.7]), high ambient temperature (72.4% [51.1 to 179.5]), high fasting plasma glucose (32.1% [26.7–38.1]), diet high in sugar-sweetened beverages (23.4% [12.7–35.7]), low physical activity (11.3% [1.8–34.9]), high systolic blood pressure (6.7% [2.5–11.6]), lead exposure (6.5% [4.5–11.2]), and diet low in omega-6 polyunsaturated fatty acids (5.3% [0.5–10.5]).<sup>1</sup> Stroke attributable to metabolic risks constituted 68.8% (95% UI 57.6 to 77.5) of all strokes, environmental risks constituted 36.7% (29.0 to 44.2), and behavioural risks constituted 35.2% (26.9 to 44.7).

The study findings of the large global effect of high outdoor temperatures on stroke burden is of significant importance for public health, especially for elderly people. Between 2000-2004 and 2017-2021, the heat-related mortality from all causes in people older than 65 years has increased by approximately 85%.<sup>3</sup> Just in 2021, high outdoor temperature, globally, was responsible for almost two million DALYs from stroke, particularly in North and Central Africa, Middle East and South Asia.<sup>1</sup> For the first time, the GBD 2021 study revealed the high contribution of particulate matter air pollution to SAH (14.2% [9.8-18.0] of SAH related DALYs).<sup>1</sup>

This WSO Global Stroke Fact Sheet 2024 provides the most updated information that can be used to inform communication with all internal and external stakeholders; all statistics have been reviewed and approved for use by the WSO Executive Committee as well as leaders from the Global Burden of Disease research group. The facts endorsed by the WSO will be updated every one to two years as new data emerges. Infographics of stroke burden and risk factors in the world is presented in Figure 1.

#### Methods:

The values contained in this Fact Sheet have all been extracted from the most current GBD publication on stroke burden in *The Lancet Neurology*<sup>1</sup> (Tables 1-5) and online GBD Visualisation Tool (<http://ghdx.healthdata.org/gbd-results-tool>).

#### Discussion:

As for all GBD updates, the latest GBD 2021 stroke burden estimates supersede all previously published stroke burden estimates. The GBD 2021 findings showed that although overall global age-standardised stroke incidence, prevalence, death and DALY rates have reduced around the world, an aging population and population growth together with unfavourable trends in the PAF of some major risk factors (such as high BMI, high ambient temperature, high fasting plasma glucose, diet high in sugar-sweetened beverages, low physical activity, high SBP, lead exposure, and diet low in omega-6 polyunsaturated fatty acids) have continued to push the total burden in terms of absolute numbers ever higher, which threatens to overwhelm the healthcare system over the coming decades. But the analysis also suggests that a lack of, and unequal access to, high quality prevention, acute and rehabilitation services is significant, especially in low- and middle-income countries. To improve stroke prevention, we need (a) improved awareness of stroke and stroke risk factors; (b) better and more equitable access to prevention services and support; (c) more support at the societal, individual, public health and economic levels to facilitate behavioural change; and (d) more research in stroke prevention in different populations.

The World Stroke Organization/*Lancet Neurology* Commission on Stroke<sup>2</sup> forecasts that globally, between 2020 and 2050, deaths from stroke will increase by 50% (from 6.6million people per year to 9.7 million), with the bulk of the burden (77% prevalent, 87% fatal strokes, and 89% DALYs due to stroke) residing in low- to middle-income countries.<sup>1</sup> The number of people who die from stroke or are disabled by it has almost doubled in the last three decades and, worldwide, stroke is: (1) the second leading cause of death; (2) the third leading cause of death and disability combined (DALYs); and (3) one of the main causes of

dementia.<sup>2</sup> These GBD 2021 stroke burden estimates are of crucial importance for evidence-based health care planning, prevention, resource allocation, priority setting and stroke advocacy.

The GBD 2021 study emphasises that currently used stroke prevention strategies are not sufficiently effective to halt, let alone reduce, the fast-growing stroke burden. Additional measures to reduce stroke burden were recently outlined by the World Stroke Organization – *Lancet Neurology* Commission on Stroke<sup>2</sup> and include evidence-based pragmatic recommendations to reduce the global stroke burden, including measures to improve stroke surveillance, prevention, acute care and rehabilitation. Key recommendations include: (1) Establishing low-cost surveillance systems to provide accurate epidemiological stroke data to guide prevention and treatment; (2) Raising public awareness and action to improve healthy lifestyles and prevent stroke through population-wide use of mobile and digital technologies such as training and awareness-raising videos and apps; (3) Prioritising effective planning of acute stroke care services (Figures 2 and 3), capacity building, training, provision of appropriate equipment, treatment and affordable medicines, and adequate resource allocation at national and regional levels; (4) Adapting evidence-based recommendations to regional contexts, including training, support and supervision of community health workers to assist in long-term stroke care; and (5) Establishing local, national and regional ecosystems involving all relevant stakeholders to co-create, co-implement and monitor stroke surveillance, prevention, acute care and rehabilitation. Without scaling up these innovative evidence-based strategies and policies that target local, national, regional and global stroke prevention and care disparities, the burden of stroke continues to grow, thus threatening the sustainability of the health system across the globe.

The World Stroke Organization (WSO) outlines key challenges and opportunities to reduce the global burden of stroke through evidence-based interventions at policy and healthcare system level. The brief draws on WHO NCD Policy Best Buys<sup>4</sup> and the World Stroke Organization–*Lancet Neurology* Commission ‘Pragmatic solutions to reduce the global burden of stroke.’<sup>2</sup> These documents set out key actions that will assist governments to deliver on their commitments on reduction of non-communicable disease (NCD) and identified a series of evidence-based prevention interventions for policy makers that, if implemented across the globe, would reverse the trajectory of stroke burden through effective prevention, treatment and rehabilitation strategies.

Primordial stroke prevention is about tackling and reducing the risk factors for stroke before they are manifested in individuals as conditions such as high blood pressure or diabetes. It involves creating the social and economic conditions in which societal factors that increase stroke risk are tackled. Around the world governments have initiated awareness and educational campaigns on anti-smoking, or healthy eating, for example. These initiatives have largely been targeted at changing individuals’ behaviours and are an important part of the mix of primordial prevention interventions that governments can make. But they are only part of the picture.

As Carol Brayne argued in the *The Lancet Neurology* Anniversary Lecture 2022,<sup>5</sup> targeting individual-level intervention “ignores the magnitude of influence that commercial influences, social environment, and material circumstances have on options, opportunities, and behaviours”. *The Lancet* adds in their editorial: “Addressing the social and commercial determinants of neurological health is an essential component for tackling the burden of stroke that should not be overlooked.”<sup>6</sup> Social and commercial determinants include poverty, air pollution from traffic and industry; the costs and availability of healthy foods versus highly processed foods; urban design that inhibits exercise and exposes people to air pollution; inequality; and people’s access to information and education about stroke risk. To tackle the increased risk of stroke caused by pollution governments could: (a) regulate vehicle/industry emissions; (b) restrict traffic in urban areas (e.g. low emission zones); (c) improve public transport and promote green transport, cycling and walking; and (d) incentivise use of clean-energy economy, cleaner fuels in the home

and for cooking (e.g., indoor air pollution has been substantially reduced in India through government subsidies on cooking gas).

The World Health Organization (WHO) argues that: “At the root of many of the world’s most pressing threats to human, animal and planetary health, are unhealthy, inequitable and unsustainable food systems. Around 11 million deaths are caused by unhealthy diets annually. Our diets have become the leading contributor to global environmental degradation, affecting land, water and oceans, biodiversity, our climate and our air quality.”<sup>7</sup> Measures that governments could take to reduce stroke risk caused by unhealthy diets include: (a) subsidies for fruit and vegetables; (b) financial measures such as sugar and alcohol taxes; (c) reducing salt in processed food; (d) tackling fast food through licensing and pricing; (e) clear food labelling; (f) banning of unhealthy ingredients such as trans-fats; (g) regulating the amounts of salt, sugar and fat in processed foods; (h) providing healthy menus (e.g., unprocessed plant-food choices) in all public facilities; (i) phasing out industrialised animal farming; (j) strengthening regulation of food production, advertising and marketing; and (k) information and education campaigns. Governments can also encourage urban planning that (a) makes taking exercise easier and improves “walkability”; (b) provides green space and reduces population density; (c) separates people from cars and trucks; (d) ensures that housing and schools are built away from roads and pollution emitting industry; and (e) limits/licenses fast food outlets by district.

WSO-recommended government measures to reduce smoking include: (a) awareness campaigns; (b) bans on tobacco advertising; (c) age restrictions on the purchase of tobacco products; (d) taxation and pricing of tobacco products; (e) legal restrictions on where people can smoke; and (f) smoking cessation services. While there are many examples of awareness campaigns, especially in HICs, more research is needed to better understand what motivates the behaviour change that those awareness campaigns seek to induce. Unhealthy foods, such as highly processed snacks, red meat, sugary drinks and alcohol are promoted with extensive marketing budgets with many supermarket aisles devoted to their promotion. Governments should look at how to counter this – for example, the UK has announced banning junk food advertisements before 9.00pm on television. Weekly TV educational campaigns about stroke prevention and warning signs of stroke should be encouraged.

Primary prevention involves early detection and control of risk factors such as hypertension, dyslipidaemia, obesity, and diabetes to avoid a first stroke event. While some non-modifiable risk factors, such as age, can be used as triggers for investigation of potential stroke risk, many modifiable risk factors such as hypertension or diabetes can remain undetected. Worldwide (and especially in low- and middle-income countries), undetected and uncontrolled hypertension, high risk behaviours such as poor diet, smoking and lack of exercise, rising obesity, and air pollution continue to contribute to stroke risk.

However, it would be mistaken to exclusively target primary prevention at those who have a high risk because most strokes occur in people with medium to low risk. Therefore, primary prevention activity on a population level by governments needs to be aimed at the whole population, while primary prevention activity on an individual level by health professionals needs to be aimed at all individuals with increased risk of stroke regardless of the level of the risk. And while primary stroke prevention is often presented solely as being about individual lifestyle “choices”, in fact substantial and effective policy on prevention is needed from government and health systems.

For example, identifying and treating high blood pressure (which is the biggest risk factor for stroke and should therefore be a priority) requires extensive data gathering and population level diagnostic checks; reducing salt content in the processed food often requires legislative changes from the government. Once identified, people with high blood pressure need access to affordable medicines, regular health checks, advice and expertise and be able to source and afford to eat a healthy diet.

The challenge, especially for low- and middle-income countries is to deliver comprehensive prevention services which do more than just target those deemed high risk - 90% of strokes occur in people with low to medium stroke risk. That's why cost-effective digital tools such as the Stroke Riskometer app are referenced by the WSO. Successful primary prevention requires countries to have health systems that: (a) have good health data about their populations; (b) provide universal health coverage and provide services and advice across all geographic areas, rural and urban; (c) have universal healthcare coverage; (d) have trained staff; (e) provide affordable medicines and treatment; (f) have the political commitment from national and regional government to sustain delivery; (g) involve stroke support organisations; implement Intersectoral Global Action Plan on Epilepsy and Other Neurological Disorders (IGAP);<sup>8</sup> and (h) aim at achieving the WHO Sustainable Development Goal 3.4 - by 2030: to reduce by one third the premature mortality from non-communicable diseases through prevention and treatment and promotion of mental health and well-being.

Assessment of the incidence, prevalence, management and control of cardiovascular risk factors at the population level is vital and should be based on reliable measurements e.g., measurement of blood pressure rather than self-reported hypertension. Good data requires enough adequately trained people to collect and analyse it. Where resources are limited, efforts should be focused on collecting high-quality data for risk factors that: (a) strongly predict stroke (e.g., blood pressure, physical activity, lipid profile, diet, body weight, psychosocial factors, smoking, diabetes); (b) are highly prevalent; (c) are amenable to individual-level and/or population-level intervention; and (d) are relatively easy and cheap to monitor. Tools such as the World Health Organization's STEPS programme are valid and reliable systems for the surveillance of risk factors as are the free Stroke Riskometer app for the general population and PreventS-MD for health professionals. Governments should establish comprehensive and universal nationwide systems for monitoring stroke through registries, electronic health records, and vital statistics systems. Governments need to ensure enough adequately trained people to collect and analyse the data. Protocol-based and regulated systems for task-shifting from doctors to nurses and from nurses to community health workers can support efficient use of specialised clinical staff within the healthcare system.

Countries with universal health coverage can provide a wide range of stroke prevention services free or at low cost. The absence of universal health care exacerbates inequalities in access to stroke prevention services, and people tend to prioritise out-of-pocket costs for treatment rather than prevention, with few or no regular health checks for stroke risk factors.

Shifting or sharing of tasks from highly trained health-care professionals such as physicians and nurses, to supervised and trained paramedical health-care workers, particularly community health workers (following regulatory protocols) can facilitate primary stroke prevention interventions at the individual level, and incentives for health-care staff in rural areas should be improved to encourage relocation and retention.

Lack of trained health-care staff is a major barrier to providing primary and secondary stroke prevention services. The unequal distribution of health-care staff and socioeconomic differences between urban and rural areas create inequalities in access to services, and negatively affect health literacy. Countries with a wide network of service delivery by a mixture of staff (e.g., doctors, nurses, community health workers) with stroke-specific training can provide a wide range of stroke prevention services.

Once a person's stroke risk has been assessed, and conditions such as hypertension or diabetes have been identified, it is vital that patients have access to and can afford the appropriate treatments and medicines. The World Stroke Organization-*Lancet Neurology* commission<sup>2</sup> recommend that access to affordable medications for primary and secondary stroke prevention should be improved, with a focus on essential medications (such as polypills including blood-pressure and lipid-lowering drugs on the WHO list of

essential medications) and tools. Essential drugs for primary and secondary prevention should be subsidised and made available at all hospitals and outpatient clinics.

The WSO-*Lancet Neurology* Commission also suggests that a tripartite approach to stroke prevention comprising behavioural, pharmacological, and health-system-level and societal interventions (based on the socioecological model), could minimise the fragmentation and inefficiency of primary stroke prevention. Health-care system-level interventions would include screening for stroke risk factors at every clinical encounter, while societal interventions should include ensuring availability of affordable healthy foods, clean air, and spaces for physical activity. An absence of effective government-led primary stroke prevention activities is linked to low population health literacy about stroke prevention. Strong governance in stroke prevention facilitates high-quality services. A political commitment to stroke prevention and a national strategy to control risk factors enhances both primary and secondary stroke prevention. Active participation of stroke organisations enhances governance. Countries with strong governance use health data for decision making and evidence-based interventions, whereas a lack of government commitment to prevention of cerebrovascular diseases along with lack of evidence-based national prevention guidelines hinder prevention. Stroke support organisations can also be effective in working with health professionals at community level to raise awareness of stroke risk.

Reducing stroke burden also requires effective secondary stroke prevention interventions. People who have had a stroke or TIA are at a much higher risk of having a second one. 2–3% of survivors of a first stroke have another stroke within the first 30 days, 9% in the first 6 months and 10–16% within a year. After a year the figure is 5%.<sup>9</sup> It is vital that everyone who has a stroke or TIA has all the interventions and information needed to reduce their risk of a recurrent stroke. Most stroke survivors already have an underlying medical condition that increased their risk of stroke. These underlying conditions remain a risk after the first stroke event and must be treated. They are modifiable, so secondary prevention interventions can make a big difference. Most of these risk factors are symptomless and require tests and investigations to diagnose. Assessment of stroke risk factors should begin as soon as possible after the initial stroke or TIA. Everyone should have access to screening and appropriate management of underlying conditions such as hypertension, diabetes, carotid stenosis and atrial fibrillation.

People who have had a stroke should have a plan for secondary stroke prevention, including access to regular monitoring, medication and support for behavioural change. Helping people understand the medical conditions that may have caused their stroke will help them to know how they can reduce the risk of a further stroke. Ensuring stroke survivors have access to advice from health professionals is vital. Stroke survivors need specific advice and support for healthy lifestyle measures, such as diet considerations when there are swallowing limitations, and exercise and activity levels especially if they have been disabled by their stroke. Clinicians, medical practitioners and stroke support organisations have a vital opportunity and role to play in supporting people to manage behaviours to reduce the risk of having another stroke. Regular post-stroke reviews and check-ups are very important, especially as many stroke survivors feel they do not get the support they need to stay healthy. Stroke survivors need to understand the way they can tackle the modifiable lifestyle risk factors they face. Ensuring stroke survivors have access to ongoing support, resources and opportunities to sustain lifestyle changes is crucial.

As with primary stroke prevention, secondary stroke prevention services should be free and easily accessed as part of universal health coverage. National and regional health budgets should be allocated to primary and secondary stroke prevention as well as effective treatment and rehabilitation services.

While effective treatments are available, access to care is limited to just a fraction of stroke patients. Technologies such as mechanical thrombectomy are not just another tool but a beacon of hope, offering the potential to improve the lives of millions of people who experience the impact of stroke every year. Policymakers and other stakeholders should recognise the potential these treatments have to strengthen

their health systems and increase access. Improving access to mechanical thrombectomy and developing the 24/7 infrastructure networks needed to support this treatment will require concrete actions, but the potential for positive change is within our grasp. Investing in stroke care and research is not just a financial commitment, but also a highly effective investment. The current human and economic cost of stroke is enormous, and without targeted efforts, it will only escalate. The efficacy of intravenous thrombolysis and especially mechanical thrombectomy surpasses that of treatments for comparable NCDs by a wide margin. Investing in these treatments will yield long-term savings on the direct costs for nursing and rehabilitation and help to alleviate the strain on healthcare budgets regardless of a country's income level. Investing in stroke care will increase quality of life and reduce costs. Governments, providers, professional societies, and patient groups all have a crucial role to play in combatting this disease. Their collaborative efforts can bring meaningful change. This entails not only increasing the capacity of stroke units as the first level of care but also significantly boosting the proportion of patients receiving effective advanced treatment, thereby preventing lifelong disability and ensuring functional independence after a stroke. It means educating health workers, individuals, communities, and the entire care pathway, about the importance of swift action in the event of a stroke. By taking these steps, governments can empower their citizens and take responsibility for improving the health of their nations.

To demonstrate the feasibility and efficacy of the implementation of some of these preventative strategies, we would like to present several success stories. For example, over 50% of South African adults are overweight or obese, with 69% of these adults living in food-insecure households where families have little dietary choice and are forced to eat food with low nutritional value. The country has implemented a multi-dimensional approach, including data collection via the [National Food and Nutrition Security Survey](#). In 2018 the government introduced a 10% tax on sugary soft drinks (SSBs) as part of a strategy to reduce obesity and NCD risk in the population. Following implementation of the tax in 2018, the country has seen a 29% average reduction in purchases of SSBs.<sup>10</sup> The impact on those in low-income urban households has been even more pronounced with purchases in these households reduced by 57%.<sup>11</sup>

To support public understanding and promote healthier nutritional choices, the Heart and Stroke Foundation South Africa established a Nutrition Science Team, ensuring that all nutritional information communicated to the public is evidence-based, understandable, practical and cost effective. The Nutrition Science and Health Promotion teams present health talks for the [School Health Promotion Initiative](#) and the Mended Hearts and Stroke Group in community-based settings and is also engaged in private sector employee wellness work. They also send monthly CVD updates with peer-reviewed articles to health professionals and respond to public health-related and nutrition questions. The team also works with all Foundation programs for key public health events, including health promotions, disease prevention activities, virtual talks, and health risk assessments. The School Health Promotion Initiative (SHPI) is aimed at “all of the school” programmes to raise awareness among young South Africans on the importance of adopting healthy behaviours and to encourage all staff at the targeted schools to know their health status. The Health Promotion team at a SHPI event conducts Health Risk Assessments (HRA) by screening of the population. A typical SHPI event adopts a holistic approach and includes a Health talk for all the learners at the school, which focuses on the importance of a “healthy heart and brain” and what behaviours to adopt to stay healthy.

In 2022 under the leadership of Prof. Sheila Martins, and with support from the government of Brazil and industry partners, a programme of training of health volunteers (community health workers [CHWs]) for stroke prevention activities to facilitate task-shifting of this work from clinicians to CHWs was initiated and hundreds of CHWs were deployed throughout the country. CHW joined online training on stroke risk factors and prevention, behaviour modification, screening and management of hypertension and atrial fibrillation (irregular heartbeat). The training layered onto existing WHO HEARTS and Better Cities initiatives to provide a holistic approach to prevention. CHWs were provided with translated public

information resources developed by WSO and sensitised to the use of mobile technologies, such as Stroke Riskometer app, to measure, track stroke risk factors in the community and motivate individual behaviour change. Following the training, the Stroke Riskometer app was used by the trained CHWs in communities to conduct assessments and familiarise individuals with their lifetime risk of stroke, highlighting where this can be reduced, and sharing information on relevant risk factors and prevention. Motivational push notifications were designed to help keep 3350 participating individuals engaged over the course of the programme that also included a randomised clinical trial. A follow-up survey with a sample of programme individuals participating in the RCT (n=367)<sup>12</sup> was conducted at 6 months with 79% indicating increased knowledge of stroke risk factors and 62% indicating that participation had led them to take action to modify their risks resulting in noticeable reduction in SBP and increased physical activity compared to controls (usual care).

The [Australian Stroke Foundation's Living Well After Stroke](#) (LWAS) program is an evidence based, 8-week group intervention designed to help stroke survivors make lasting health behaviour changes, such as healthy eating, increasing physical activity, and managing medication. Based on the Health Action Process Approach (HAPA) model it equips participants with a 'toolkit' of skills and strategies to sustain these changes.

LWAS was piloted in 2023. Of the 61 participants, 94% reported the program exceeded their expectations. Not only did participants implement their chosen behaviour, but they also independently applied the LWAS 'toolkit' to change an additional behaviour after the program. Furthermore, a significant and sustained improvements in wellbeing was observed. The program is currently being run in Tasmania, with many participants from areas of the state with little to no access to health services post stroke. LWAS will be expanded nationally in 2025.

In conclusion, prevention is one of the most effective and cost-efficient ways to reduce the increasing stroke burden which has devastating impacts on individual and societal level. Moreover, impactful prevention initiatives can be implemented in low- and middle-income countries which experience the greatest stroke burden and the most significant challenges in relation to providing acute stroke care. By enacting stroke prevention policies at social, healthcare and individual levels, countries can significantly reduce their healthcare costs and support sustainable development of stroke care across the care pathway. Governments must act to: (a) reduce inequities and other social determinants of stroke and cardiovascular disease; (b) promote and support access to healthy lifestyles Implement taxation and control measures to address the impact of harmful substances; (c) establish multi-sectoral public health partnerships to address the socioeconomic and environmental drivers; (d) provide universal health coverage to support management of clinical risk factors for stroke; (e) establish reliable and comprehensive data collection systems for stroke; (f) establish strategies that identify and manage people at any level of increased risk of CVD; (g) provide employment and training of community-based health workers supported by eHealth technologies; (h) develop culturally relevant primary and secondary prevention strategies; and (i) deliver on-going stroke awareness campaigns.

#### **Contributions:**

Valery L. Feigin conducted the literature reviews, calculated the statistics and developed the draft Fact Sheet. Ilari Rautalin prepared Tables 1-5. Bo Norrving, Michael Brainin, Sheila Martins, Jeyaraj Pandian, Maria Grupper and Patrice Lindsay provided guidance, input, and edits throughout the development of this work. All authors reviewed and approved the final version of the manuscript.

#### **Disclosures**

VLf declares that free Stroke Riskometer app and PreventS-MD are owned and copyrighted by Auckland University of Technology Ventures Ltd. and PreventS-MD Ltd. BN has received honoraria for DSMB work for the HOVID trial (Symbec-Orion). None of the other authors declared any conflict of interest.

### **Acknowledgements**

We would like to thank: Anita Wiseman (World Stroke Organization), Lisa Murphy (Stroke Foundation Australia), Joe Korner (Stroke Alliance for Europe), and Pamela Naidoo (Heart and Stroke Foundation South Africa) for their preparation of case studies; and Sarah Belson (World Stroke Organization and Stroke Alliance) and Joe Korner (Stroke Alliance) for reviewing the manuscript.

Figure 1. Infographics of stroke burden and risk factors in the world

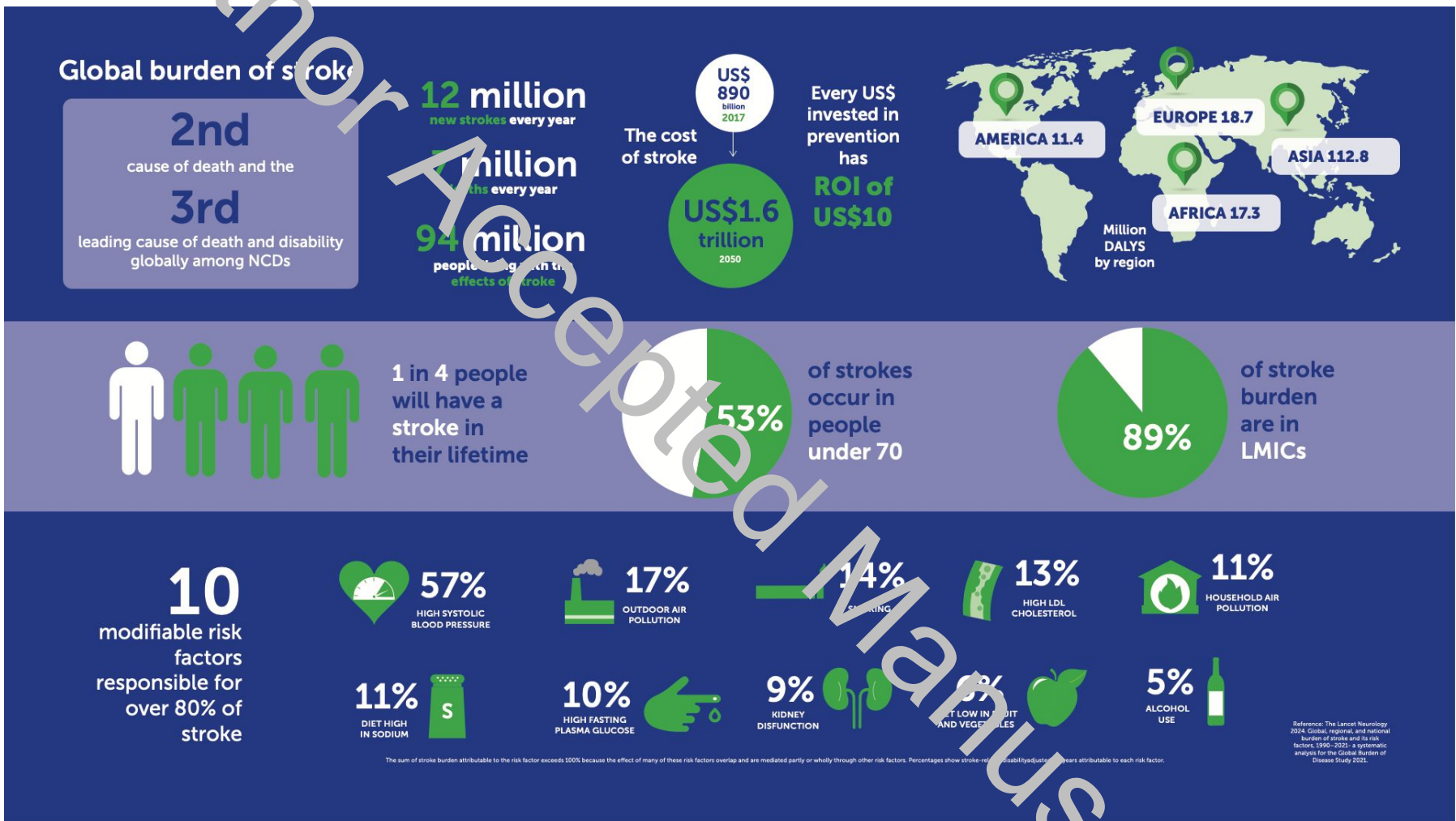


Figure 2. Time for a revolution in stroke care

Serious investment to optimize stroke management will bring significant economic benefits and make a real difference in the lives of millions.

Stroke is a leading cause of disability and the second leading cause of death worldwide.

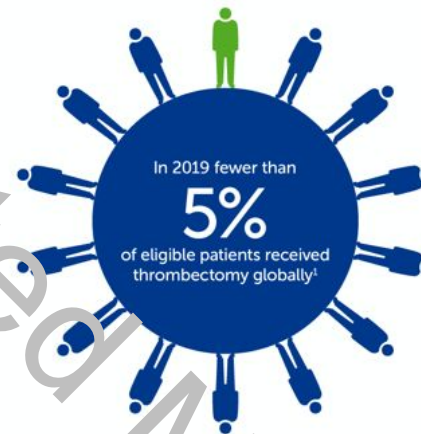


12 million people worldwide have a stroke every year. Half of those affected die, while a similar number face permanent disability.

The direct and indirect costs are conservatively estimated to more than double over the next 25 years.<sup>1</sup>



Mechanical thrombectomy has been proven to be both effective at achieving better clinical outcomes and highly cost-effective for patients with acute ischemic stroke.<sup>2</sup>



### Policy recommendations

Effective policy can and does make a significant impact.

- 1 Set targets and quality indicators, assess current gaps and prioritize stroke care in global, national, and regional health plans
- 2 Expand and invest in infrastructures for essential stroke services, including stroke units and intravenous thrombolysis
- 3 Expand and invest in (capital) infrastructures for advanced stroke services: mechanical thrombectomy
- 4 Increase the necessary skills in the health workforce
- 5 Make sure that payment models provide for adequate reimbursement of essential and advanced stroke care
- 6 Build a strategy to actualize the potential savings of essential and advanced acute stroke care

Figure 3. A collaborative policy agenda for better stroke care

What?	Who?
<p>1 Set targets and quality indicators, assess current gaps and prioritize stroke care in global, national, and regional health plans</p>	International organizations, Ministries of Health and other authorities, professional societies
<p>2 Expand and invest in infrastructures for essential stroke services, including stroke units and intravenous thrombolysis</p> <p>- 90% or more of all patients with ischemic stroke should be treated in a stroke unit</p>	Ministries of Health and other authorities, planning and reimbursement agencies, payers, secondary care facilities
<p>3 Expand and invest in (capital) infrastructures for advanced stroke services: mechanical thrombectomy</p> <p>- Stroke units with capacity to do mechanical thrombectomy, should be accessible for every patient within 45 minutes driving radius</p>	Ministries of Health and other authorities, planning and reimbursement agencies, payers, tertiary care facilities
<p>4 Increase the necessary skills in the health workforce</p>	Universities and vocational schools, professional societies
<p>5 Make sure that payment models provide for adequate reimbursement of essential and advanced stroke care</p>	Ministries of Health and other authorities, payment and reimbursement agencies, payers
<p>6 Build a strategy to actualize the potential savings of essential and advanced acute stroke care</p>	Ministries of Health and other authorities, payment and reimbursement agencies, payers

## References

1. Feigin VL, Abate MD, Abate YH, et al. Global, regional, and national burden of stroke and its risk factors, 1990-2021: a systematic analysis for the Global Burden of Disease Study 2021. *The Lancet Neurology* 2024; **23**(10): 973-1003.
2. Valery L. Feigin and Mayowa O Owolabi, on behalf of the World Stroke Organization–Lancet Neurology Commission Stroke Collaboration Group. Pragmatic solutions to reduce the global burden of stroke: a World Stroke Organization–Lancet Neurology Commission. *Lancet Neurology* 2023; **22**(12): 1160-206.
3. Romanillo M, Napoli Cd, Green C, et al. The 2023 report of the Lancet Countdown on health and climate change: the imperative for a health-centred response in a world facing irreversible harms. *The Lancet* 2023; **402**(10419): 2346-94.
4. Tackling NCDs: cost buys and other recommended interventions for the prevention and control of noncommunicable diseases, second edition. Geneva: World Health Organization; 2024. Licence: CC BY-NC-SA 3.0 IGO. <https://iris.who.int/bitstream/handle/10665/376624/9789240091078-eng.pdf?sequence=1> Accessed 10 Oct 2024.
5. Brayne C. The Lancet Neurology 20th Anniversary Lecture: Professor Carol Brayne CBE. <https://www.dementiaeuropean.nihr.ac.uk/the-lancet-neurology-20th-anniversary-lecture-professor-carol-brayne-cbe/> Accessed 10 Oct 2024. 2022.
6. The Lancet N. Tackling the burden of stroke with primordial prevention. *The Lancet Neurology* 2022; **21**(12): 1061.
7. World Health Organization. Food systems for health: information brief. Geneva, 2021 <https://www.who.int/publications/i/item/9789240035263> Accessed 10 Oct 2024.
8. World Health Organization. Draft intersectoral global action plan on epilepsy and other neurological disorders 2022 – 2031. [https://cdn.who.int/media/docs/default-source/mental-health/dementia/global-targets-and-indicators\\_summary.pdf?sfvrsn=33602d19\\_8](https://cdn.who.int/media/docs/default-source/mental-health/dementia/global-targets-and-indicators_summary.pdf?sfvrsn=33602d19_8) Accessed 24 June 2023.
9. Stahmeyer JT, Stubenrauch S, Geyer S, Weissenborn K, Eberhard J. The Frequency and Timing of Recurrent Stroke: An Analysis of Routine Health Insurance Data. *Dtsch. Arztebl Int* 2019; **116**(42): 711-7.
10. Stacey N, Tugendhaft A, Hofman K. Sugary beverage taxation in South Africa: Household expenditure, demand system elasticities, and policy implications. *Prev Med* 2017; **105s**(Suppl): S26-S31.
11. Rogers NT, Cummins S, Jones CP, et al. Estimated changes in free sugar consumption one year after the UK soft drinks industry levy came into force: controlled interrupted time series analysis of the National Diet and Nutrition Survey (2011-2019). *J Epidemiol Community Health* 2024; **78**(9): 578-84.
12. Martins S, Brainin M, Bath PM, et al. Polipill and Riskometer to prevent stroke and cognitive impairment in primary health care - PROMOTE Study. *International Journal of Stroke* 2024; **16**(25): Supplement. Abstract 142; WSCC21-870. DOI: 10.1177/17474930211041949.

**Table 1: GBD 2021 estimates for global incidence, prevalence, mortality and disability-adjusted life years (DALYs) for all stroke types combined**

Metric of the burden	Number	Crude rate per 100,000 per year (95% UI)*	Age-adjusted rate per 100,000 per year (95% UI)*	Approved Statement for use in WSO Materials
<b>Incidence</b>				
Ages (all), Sexes (both)	11,946,000	151 (137 to 168)	142 (128 to 156)	There are almost 12 million new strokes each year. Globally, one in four people over age 25 will have a stroke in their lifetime.
15-49 years	1,762,000	45 (39-52)	-	Each year, about 15% of all strokes occur in people 15-49 years of age.
<70 years	6,307,000	85 (70-97)	-	Each year, about 53% of all strokes occur in people under 70 years of age.
Men (all ages)	6,284,000	159 (143 to 177)	160 (144 to 178)	Each year, about 53% of all strokes occur in men.
Women (all ages)	5,662,000	144 (130 to 157)	125 (113 to 137)	Each year, about 47% of all strokes occur in women.
<b>Prevalence</b>				
Ages (all), Sexes (both)	93,816,000	1,189 (1,128 to 1,259)	1,099 (1,044 to 1,162)	Globally, there are almost 94 million people currently living who have experienced stroke.
15-49 years	20,319,000	515 (478-550)	-	22% of people who have experienced a stroke and are currently living are people 15-49 years of age.
<70 years	61,049,000	825 (778-876)	-	65% of people who have experienced a stroke and are currently living are under the age of 70.
Men (all ages)	47,811,000	1,208 (1,145 to 1,277)	1,184 (1,124 to 1,252)	51% of people who have experienced a stroke and are currently living are men. Globally, men account for just over half (51%) of all persons who have experienced a stroke.
Women (all ages)	46,006,000	1,170 (1,107 to 1,240)	1,028 (974 to 1,088)	49% of people who have experienced a stroke and are currently living are women.
<b>Deaths</b>				
Ages (all), Sexes (both)	7,253,000	92 (83 to 99)	87 (79 to 94)	Over seven million people die from stroke annually.
15-49 years	373,000	9 (9-10)	-	About 5% of all deaths from stroke occur in people 15-49 years old.
<70 years	2,409,000	33 (30-35)	-	33% of all deaths from stroke occur in people under 70 years old.
Men (all ages)	3,775,000	95 (87 to 105)	103 (93 to 113)	52% of all deaths from stroke are in men.
Women (all ages)	3,477,000	88 (78 to 97)	75 (66 to 82)	48% of all deaths from stroke are in women.
<b>DALYs</b>				
Ages (all), Sexes (both)	160,457,000	2,033 (1,873 to 2,175)	1,886 (1,739 to 2,018)	Over 160 million years of healthy life are lost each year due to stroke-related death and disability.

15-49 years	71,367,000	541 (497-587)	-	13% of healthy life lost due to stroke-related death and disability affects people 15-49 years old.
<70 years	88,147,000	1,192 (1,102-1,281)	-	55% of healthy life lost due to stroke-related death and disability affects people under the age of 70 years.
Men (all ages)	88,277,000	2,230 (2,036 to 2,454)	2,232 (2,037 to 2,451)	Men account for 55% of healthy life lost due to stroke-related disability.
Women (all ages)	72,180,000	1,875 (1,667 to 1,989)	1,578 (1,435 to 1,709)	Women account for 45% of healthy life lost due to stroke-related disability.

Notes: \* 95% Uncertainty Interval [UI] represents a range of values that reflects the certainty of an estimate. In the GBD study, every estimate is calculated 1,000 times, each time sampling from distributions rather than point estimates for data inputs, data transformations and model choice. The 95th uncertainty interval is determined by the 25th and 975th value of the 1,000 values after ordering them from smallest to largest. Larger uncertainty intervals can result from limited data availability, small studies, and conflicting data, while smaller uncertainty intervals can result from extensive data availability, large studies, and data that are consistent across sources.

Table 2: GBD 2021 estimates for global incidence, prevalence, mortality and disability-adjusted life years (DALYs) for ischaemic stroke

Metric of the burden	Number	Crude rate per 100,000 per year (95% UI)	Age-adjusted rate per 100,000 per year (95% UI)	Approved Statement for use in WSO Materials
<b>Incidence</b>				
Ages (all), Sexes (both)	7,804,000	99 (85 to 113)	92 (80 to 106)	There are over 7.8 million new ischaemic strokes each year. Globally, about 65% of all incident strokes are ischaemic strokes.
15-49 years	907,000	23 (18 to 28)	-	Each year, over 12% of all ischaemic strokes occur in people 15-49 years of age.
<70 years	3,847,000	52 (43 to 62)	-	Each year, over 49% of all ischaemic strokes occur in people under 70 years of age.
Men (all ages)	4,022,000	102 (87 to 113)	103 (89 to 119)	Each year, about 52% of all ischaemic strokes occur in men.
Women (all ages)	3,782,000	96 (83 to 110)	83 (71 to 95)	Each year, about 48% of all ischaemic strokes occur in women.
<b>Prevalence</b>				
Ages (all), Sexes (both)	69,945,000	886 (821 to 951)	819 (760 to 879)	Globally, there are almost 70 million people currently living who have experienced ischaemic stroke.
15-49 years	12,073,000	306 (273 to 339)	-	17% of people who have experienced an ischaemic stroke and are currently living are people 15-49 years of age.
<70 years	41,516,000	561 (513 to 608)	-	59% of people who have experienced an ischaemic stroke and are currently living are under the age of 70.
Men (all ages)	35,241,000	890 (824 to 955)	882 (819 to 945)	50% of people who have experienced an ischaemic stroke and are currently living are men.
Women (all ages)	34,704,000	883 (816 to 948)	769 (713 to 826)	50% of people who have experienced an ischaemic stroke and are currently living are women.
<b>Deaths</b>				
Ages (all), Sexes (both)	3,591,000	46 (41 to 49)	44 (39 to 48)	3.6 million people die from ischaemic stroke annually.
15-49 years	54,000	1 (1 to 2)	-	Almost 2% of all deaths from ischaemic stroke occur in people 15-49 years old.
<70 years	692,000	9 (9 to 10)	-	19% of all deaths from ischaemic stroke occur in people under 70 years old.
Men (all ages)	1,779,000	45 (41 to 50)	51 (46 to 56)	50% of all deaths from ischaemic stroke are in men.
Women (all ages)	1,813,000	46 (40 to 51)	39 (33 to 43)	50% of all deaths from ischaemic stroke are in women.
<b>DALYs</b>				
Ages (all), Sexes (both)	70,358,000	892 (815 to 963)	837 (764 to 905)	Over 70 million years of healthy life is lost each year due to ischaemic stroke-related death and disability. Globally, DALYs

				from ischaemic stroke constituted about 43% of DALYs from all strokes combined.
15-49 years	4,387,000	111 (96 to 127)	-	6% of healthy life lost due to ischaemic stroke-related death and disability affects people 15-49 years old.
<70 years	27,034,000	365 (329 to 401)	-	38% of healthy life lost due to ischaemic stroke-related death and disability affects people under the age of 70 years.
Men (all ages)	37,007,000	953 (848 to 1,027)	975 (886 to 1,070)	Men account for 53% of healthy life lost due to ischaemic stroke-related disability.
Women (all ages)	33,350,000	848 (757 to 932)	720 (643 to 792)	Women account for 47% of healthy life lost due to ischaemic stroke-related disability.

Table 3: GBD 2021 estimates for global incidence, prevalence, mortality and disability-adjusted life years (DALYs) for intracerebral haemorrhage

Metric of the burden	Number	Crude rate per 100,000 per year (95% UI)	Age-adjusted rate per 100,000 per year (95% UI)	Approved Statement for use in WSO Materials
<b>Incidence</b>				
Ages (all), Sexes (both)	3,444,000	44 (39 to 48)	41 (36 to 45)	There are over 3.4 million new intracerebral haemorrhages each year. Globally, about 29% of all incident strokes are intracerebral haemorrhages.
15-49 years	614,000	15 (13-19)	-	Each year, about 18% of all intracerebral haemorrhages occur in people 15-49 years of age.
<70 years	1,944,000	26 (22 to 30)	-	Each year, over 56% of all intracerebral haemorrhages occur in people under 70 years of age.
Men (all ages)	1,921,000	49 (43 to 55)	49 (43 to 54)	Each year, about 56% of all intracerebral haemorrhages occur in men.
Women (all ages)	1,524,000	39 (34 to 45)	34 (29 to 37)	Each year, about 44% of all intracerebral haemorrhages occur in women.
<b>Prevalence</b>				
Ages (all), Sexes (both)	16,604,000	210 (192 to 230)	95 (178 to 213)	Globally, there are almost 17 million people currently living who have experienced intracerebral haemorrhage.
15-49 years	5,579,000	141 (128 to 158)	-	34% of people who have experienced an intracerebral haemorrhage and are currently living are people 15-49 years of age.
<70 years	13,568,000	183 (167 to 201)	-	82% of people who have experienced an intracerebral haemorrhage and are currently living are under the age of 70.
Men (all ages)	9,349,000	236 (215 to 259)	225 (205 to 246)	56% of people who have experienced an intracerebral haemorrhage and are currently living are men. Globally, men account for just over half (56%) of all persons who have experienced an intracerebral haemorrhage.
Women (all ages)	7,255,000	185 (169 to 202)	166 (152 to 181)	44% of people who have experienced an intracerebral haemorrhage and are currently living are women.
<b>Deaths</b>				
Ages (all), Sexes (both)	3,308,000	42 (38 to 46)	39 (36 to 42)	Over 3.3 million people die from intracerebral haemorrhage annually.
15-49 years	264,000	7 (6 to 7)	-	About 8% of all deaths from intracerebral haemorrhage occur in people 15-49 years old.
<70 years	1,524,000	21 (19-22)	-	46% of all deaths from intracerebral haemorrhage occur in people under 70 years old.

Men (all ages)	1,823,000	46 (41 to 52)	47 (42 to 53)	55% of all deaths from intracerebral haemorrhage are in men.
Women (all ages)	1,486,000	38 (33 to 42)	32 (28 to 36)	45% of all deaths from intracerebral haemorrhage are in women.
<b>DALYs</b>				
Ages (all), Sexes (both)	79,457,000	1,007 (922 to 1,083)	924 (845 to 993)	Over 79 million years of healthy life are lost each year due to intracerebral haemorrhage-related death and disability. Globally, DALYs from intracerebral haemorrhage constituted about 50% of DALYs from all strokes combined.
15-49 years	13,795,000	342 (318 to 382)	-	17% of healthy life lost due to intracerebral haemorrhage-related death and disability affects people 15-49 years old.
<70 years	52,995,000	716 (660-716)	-	67% of healthy life lost due to intracerebral haemorrhage-related death and disability affects people under the age of 70 years.
Men (all ages)	45,787,000	1,156 (1,043 to 1,297)	1,123 (1,014 to 1,252)	Men account for 58% of healthy life lost due to intracerebral haemorrhage-related disability.
Women (all ages)	33,671,000	856 (759 to 950)	743 (658 to 823)	Women account for 42% of healthy life lost due to intracerebral haemorrhage-related disability.

**Table 4: GBD 2021 estimates for global incidence, prevalence, mortality and disability-adjusted life years (DALYs) for subarachnoid haemorrhage**

Metric of the burden	Number	Crude rate per 100,000 per year (95% UI)*	Age-adjusted rate per 100,000 per year (95% UI)	Approved Statement for use in WSO Materials
<b>Incidence</b>				
Ages (all), Sexes (both)	697,000	9 (8 to 10)	8 (7 to 9)	There are almost 700,000 new subarachnoid haemorrhages each year. Globally, about 6% of all incident strokes are subarachnoid haemorrhage.
15-49 years	242,000	5 (4 to 8)	-	Each year, over 34% of all subarachnoid haemorrhages occur in people 15-49 years of age.
<70 years	517,000	7 (6 to 9)	-	Each year, over 74% of all subarachnoid haemorrhages occur in people under 70 years of age.
Men (all ages)	341,000	9 (8 to 10)	9 (7 to 10)	Each year, about 49% of all subarachnoid haemorrhages occur in men.
Women (all ages)	357,000	9 (8 to 10)	8 (7 to 9)	Each year, about 51% of all subarachnoid haemorrhages occur in women.
<b>Prevalence</b>				
Ages (all), Sexes (both)	7,853,000	100 (91 to 109)	92 (84 to 101)	Globally, there are almost 7.9 million people currently living who have experienced subarachnoid haemorrhage.
15-49 years	2,710,000	69 (61 to 77)	-	35% of people who have experienced a subarachnoid haemorrhage and are currently living are people 15-49 years of age.
<70 years	6,260,000	85 (77-93)	-	80% of people who have experienced a subarachnoid haemorrhage and are currently living are under the age of 70.
Men (all ages)	3,543,000	89 (81 to 98)	86 (78 to 94)	45% of people who have experienced a subarachnoid haemorrhage and are currently living are men.
Women (all ages)	4,310,000	110 (100 to 119)	98 (90 to 107)	55% of people who have experienced a subarachnoid haemorrhage and are currently living are women. Globally, women account for just over half (56%) of all persons who have experienced a subarachnoid haemorrhage.
<b>Deaths</b>				
Ages (all), Sexes (both)	353,000	4 (4 to 5)	4 (4 to 5)	Over 350,000 people die from subarachnoid haemorrhage annually.
15-49 years	55,000	1 (1 to 2)	-	About 16% of all deaths from subarachnoid haemorrhage occur in people 15-49 years old.
<70 years	193,000	3 (2 to 3)	-	55% of all deaths from subarachnoid haemorrhage occur in people under 70 years old.

Men (all ages)	174,000	4 (4 to 5)	4 (4 to 6)	49% of all deaths from subarachnoid haemorrhage are in men.
Women (all ages)	179,000	5 (4 to 5)	4 (3 to 5)	51% of all deaths from subarachnoid haemorrhage are in women.
<b>DALYs</b>				
Ages (all), Sexes (both)	10,642,000	135 (119 to 154)	125 (111 to 143)	Over 10 million years of healthy life are lost each year due to subarachnoid haemorrhage-related death and disability. Globally, DALYs from subarachnoid haemorrhage constituted approximately 7% of DALYs from all strokes combined.
15-49 years	3,188,000	1 (99-97)	-	30% of healthy life lost due to subarachnoid haemorrhage-related death and disability affects people 15-49 years old.
<70 years	8,113,000	110 (6-12)	-	76% of healthy life lost due to subarachnoid haemorrhage-related death and disability affects people under the age of 70 years.
Men (all ages)	5,483,000	138 (114 to 177)	134 (110 to 168)	Men account for 52% of healthy life lost due to subarachnoid haemorrhage-related disability.
Women (all ages)	5,158,000	131 (117 to 150)	116 (104 to 133)	Women account for 48% of healthy life lost due to subarachnoid haemorrhage-related disability.

**Table 5: 2021 Global Burden of Disease estimates for stroke burden (as measured by DALYs) attributable to risk factors**

1.	Metabolic risks (high systolic blood pressure (SBP), high body-mass index (BMI), high fasting plasma glucose (FPG), high total cholesterol, and low glomerular filtration rate) account for 68.8% (57.6–77.5) of stroke burden.
2.	Behavioural factors (smoking, poor diet and low physical activity) account for 35.2% (26.9–44.7) of stroke burden, and environmental risks (air pollution and lead exposure) 36.7% [29.0–44.2].
3.	Metabolic risk factors contributed most to the stroke-related DALYs (range 66–70%) across all World Bank country income levels, followed by the environmental risk cluster in low-income, lower- middle-income and upper-middle-income countries (range 18–53%), and behavioural risks (range 30–38%) across different income level countries.
4.	Globally, 16 individually significant risk factors for stroke are high SBP (56.8% [95% UI 42.5–68.0] attributable DALYs), ambient particulate matter (16.6% [11.5–20.9]), smoking (13.7% [11.8–15.8]), high LDL cholesterol (11.1% [4.6–21.3]), household air pollution (11.2% [6.4–19.3]), diet high in sodium (10.6% [2.8–22.8]), high FPG (10.3% [8.1–12.6]), kidney disfunction (9.3% [6.8–11.8]), diet low in fruits (5.9% [0.4–10.4]), high alcohol use (5.2% [1.3–9.8]), low temperature (4.8% [4.2–5.5]), high BMI (4.7% [0.4–9.8]), second-hand smoking (4.4% [1.0–7.9]), low physical activity (2.1% [0.5–3.9]), diet low in vegetables (1.6% [0.4–2.6]) and high temperature (1.1% [0.2–2.5]).
5.	All risk factors combined account for 83.6% (77.3–88.3) of the global stroke burden.

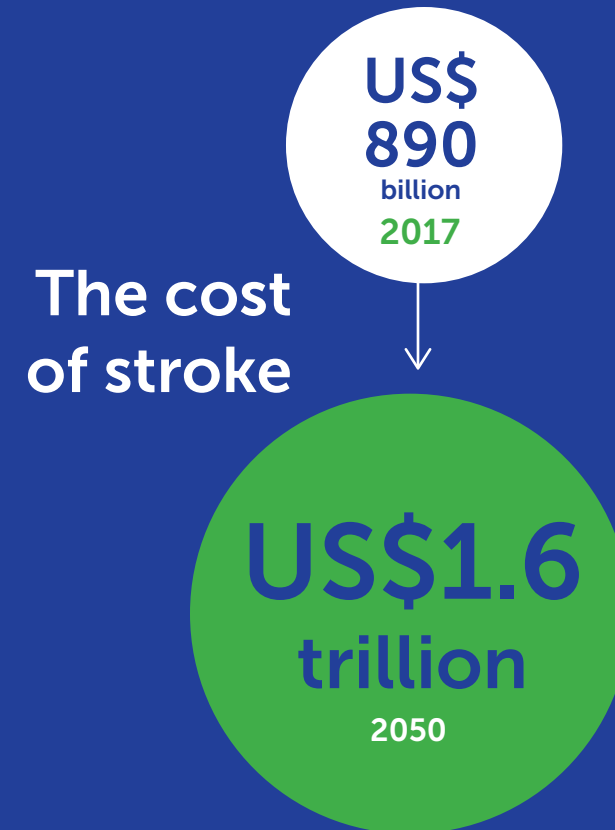
# Global burden of stroke

**2nd**  
cause of death and the  
**3rd**  
leading cause of death and disability  
globally among NCDs

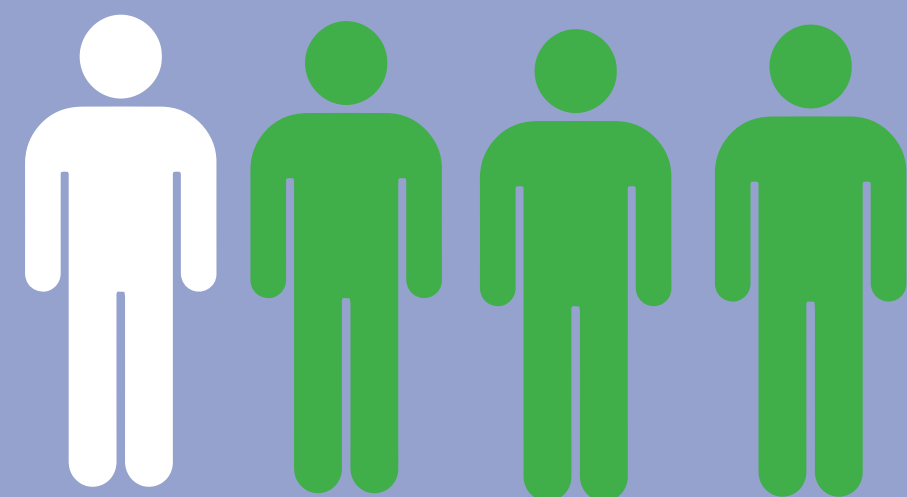
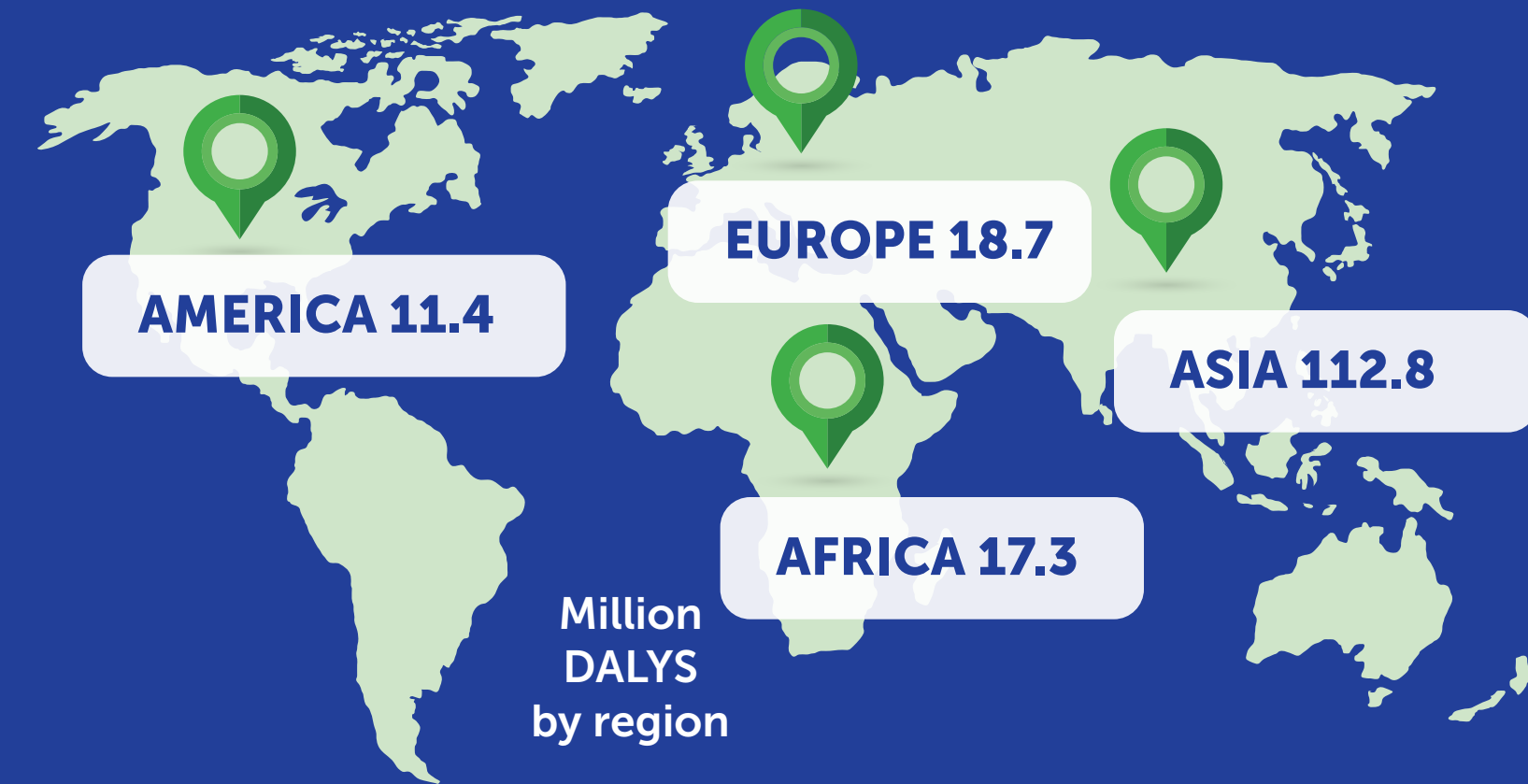
**12 million**  
new strokes every year

**7 million**  
deaths every year

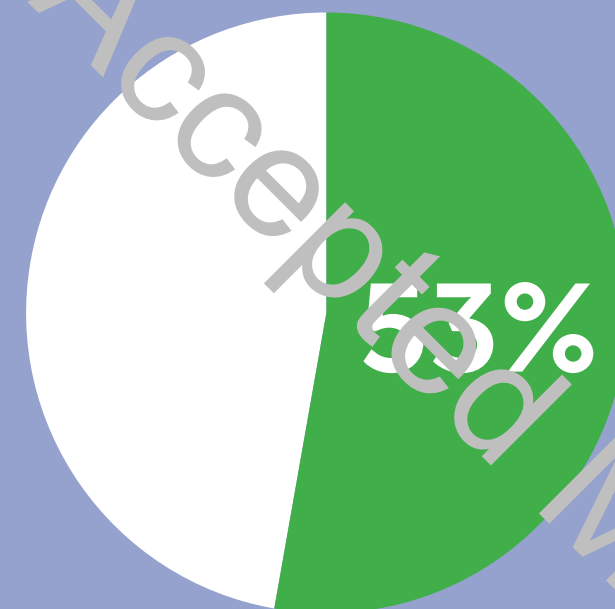
**94 million**  
people living with the  
effects of stroke



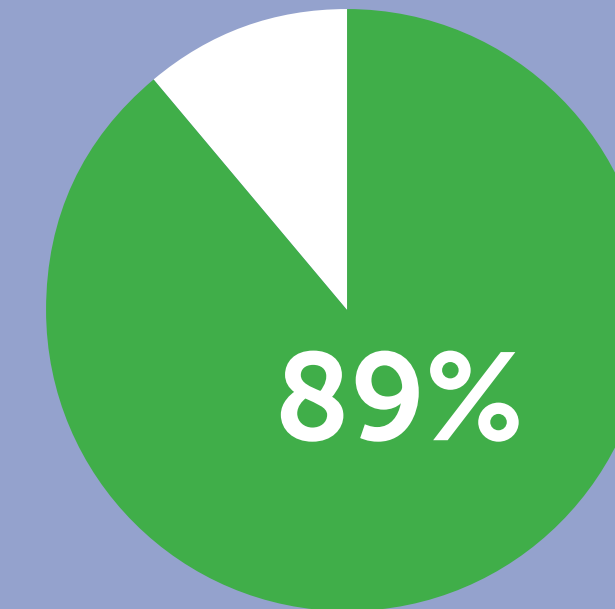
Every US\$ invested in prevention has  
**ROI of US\$10**



1 in 4 people will have a stroke in their lifetime

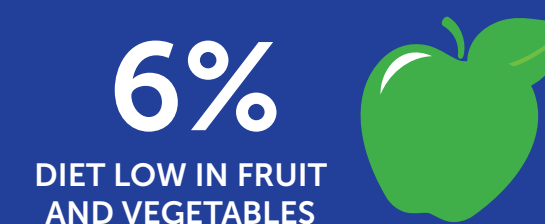
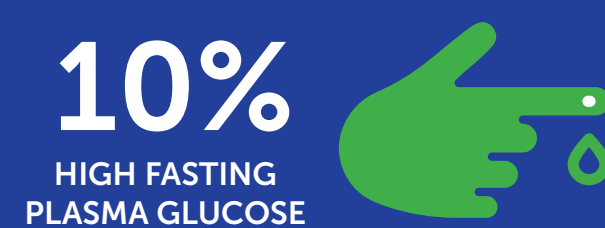
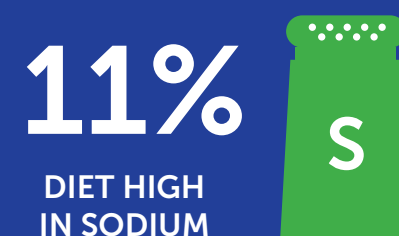
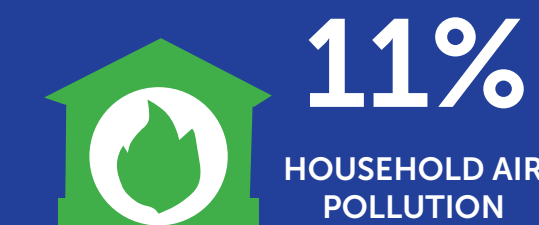
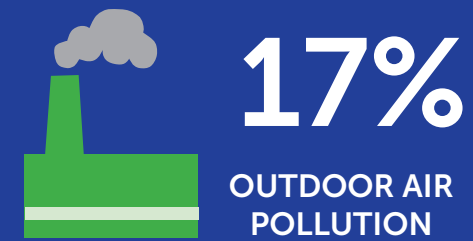
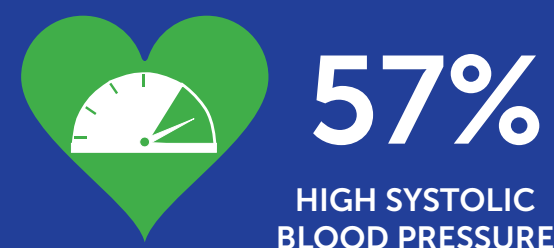


of strokes occur in people under 70



of stroke burden are in LMICs

**10**  
modifiable risk factors responsible for over 80% of stroke



The sum of stroke burden attributable to the risk factor exceeds 100% because the effect of many of these risk factors overlap and are mediated partly or wholly through other risk factors. Percentages show stroke-related disability-adjusted life years attributable to each risk factor.

Reference: The Lancet Neurology 2024. Global, regional, and national burden of stroke and its risk factors, 1990–2021 – a systematic analysis for the Global Burden of Disease Study 2021.