

A CRITICAL COMPARISON OF GREEN BUILDING RATING SYSTEMS

Dat Tien Doan^{1*}, Ali Ghaffarianhoseini¹, Nicola Naismith¹, Tongrui Zhang¹, Amirhosein Ghaffarianhoseini^{2&3}, John Tookey¹
dat.doan@aut.ac.nz

¹Department of Built Environment Engineering, Auckland University of Technology, 55 Wellestey St E, Auckland, New Zealand

²Faculty of Engineering and Architectural Science, Ryerson University, Toronto, Canada

³Faculty of Arts and Social Sciences, University of Malaya (UM), Kuala Lumpur, Malaysia

Abstract

Various green rating systems are established globally to evaluate the sustainability of construction projects. Their categories and criteria have been under constant updates to follow the sustainable trend of building development. This paper aims to develop a systematic review of the development of green rating systems. The specific objectives are: 1) discover how interest and research in green rating systems have developed; 2) identify the similarity, difference, strength and weakness of green rating systems; 3) examine whether they fully assess the projects in all aspects of sustainability. Specifically, LEED (Leadership in Energy and Environmental Design), BREEAM (Building Research Establishment Assessment Method), CASBEE (Comprehensive Assessment System for Building Environmental Efficiency) and Green Star NZ were analysed in this paper. The results indicate that BREEAM, LEED, and CASBEE have been utilized since late the 2000s while Green Star NZ is still in its earlier stages. 70% of the research papers focusing on BREEAM, LEED, CASBEE are developed geographically in the USA, Canada, the UK, China, and Australia. Although these four rating systems were initiated in different contexts with different standards, Indoor Environment Quality, Energy, and Material are core common categories for all. Environmental concerns are the main focus in New Construction manuals while Society is emphasized in Neighbourhood Development manuals. Currently, BREEAM has been the only tool which could assess all four sustainable factors. Further in-depth research is anticipated to focus more on economic and institutional factors to improve the capability of green rating systems for sustainability assessment purposes.

Keywords: Green Rating Systems, Sustainability, BREEAM, LEED, CASBEE, Green Star NZ

1. INTRODUCTION

The construction industry plays an important role in satisfying the needs of society, enhancing the quality of life [1-3], and contributing to the economic growth of a country [3-6]. However, it has been heavily criticised for being a major contributor to carbon emissions, environmental degradation, and global warming [7-11] due to its utilization of a large proportion of natural resources and energy consumption [11-14]. The building sector consumes a third of global resources [15, 16], one sixth of global freshwater withdrawals [17], 25% of wood harvested [16], and 40% of all raw materials [16]. Approximately 10% of all global energy supply takes place during the manufacturing of building materials [10, 15]. Also, the building sector generates a large amount of construction and demolition waste, accounting for 40% of total solid waste in developed countries [18-20]. Moreover, the construction industry is responsible for major energy consumption, accounting for 40-50% of all energy usage and anthropogenic greenhouse gas emissions globally [21-25].

Recognizing the importance of sustainable building practices, “going green” and “environment sustainability” has been introduced for many years [10, 26]. However, construction is still a major energy consumer based on official statistics [10]. This could be due to the passive attitude of construction practitioners towards adopting sustainable solutions [7]. Facing the rising energy costs and growing environmental concerns, the demand for sustainable building facilities with minimal environmental impact has been pushed recently [27-29].

Authorities and organizations initiated the rating systems for green buildings to minimize/optimize consumption of natural resources and control pollutions. Buildings certified by those rating systems are considered as consuming less energy, providing a better living environment and contributing to the overall reputation of the property [30]. It is estimated that there are approximately 600 green rating systems globally [31]. BREEAM (Building Research Establishment Assessment Method) is known as the first rating tool to assess building performance based on certain target values for different criteria [32-34]. In addition, numerous schemes such as the United States’ LEED (Leadership in Energy and Environmental Design), Canada’s LEED Canada, France’s HQE (High Environmental Quality), Germany’s DGNB (Deutsche Gesellschaft für Nachhaltiges Bauen e.V.), Australia’s Green Star, New Zealand’s Green Star, Japan’s CASBEE (Comprehensive Assessment System for

1 Building Environmental Efficiency), Hong Kong's BEAM (Building Environmental Assessment Method),
2 Singapore' BCA (Building and Construction Authority) Green Mark Scheme are currently being utilized to
3 evaluate building performances. BREEAM certified buildings could consume 6-30% lower energy costs than
4 non-certified buildings [35, 36] while LEED certified properties consume 18-39% lower energy usage than non-
5 certified properties [35, 37-39]. However, the focus on green credentials evidenced such as LEED misses the
6 larger picture, sustainable aspect [40]. According to Berardi [41], and Runde and Thoyre [40], the impact of
7 sustainability will extend far beyond green buildings in the near future. Concerning this, all leading green
8 building rating systems have been continuously updating their criteria. LEED had a major update in 2013 with
9 LEED v4, and it just updated its rating tools in mid-2016 [42]. While the major update to BREEAM happened
10 in mid-2014 with BREEAM UK New Construction [43]. Mid-2015 and mid-2016 saw the latest version of
11 Green Star Australia and Green Star New Zealand respectively [44, 45]. Besides, international standards about
12 sustainable buildings have also created. For example, ISO/TC 59/SC 17 was created in 2002 to implement
13 aspects of sustainability in the building sector [46].

14
15 Although green building rating certifications have been the focus of various researchers during the past 20 years,
16 there is still no systematic review of the detailed criteria and the updated process of each rating system. A
17 number of papers focused on the trend and credits in an individual rating tool, however, a comprehensive
18 comparison of tools has not been established. For example, Todd [47] focused on the global trends in LEED-NC
19 and LEED-EBOM besides investigating the achievement of individual LEED credits. Murakami [48] introduced
20 the concept and framework of the CASBEE-City. Cheng and Ma [49] adopted data mining techniques to
21 examine the relationship between LEED credits and climate factors. While other researchers made comparisons
22 among green rating schemes, studies to examine the update and the global trend of those schemes together or
23 research about their capability in promoting the sustainability are lacking. Lee and Burnett [50], for instance,
24 analysed the energy use assessment of HK-BEAM, BREEAM, and LEED. Schwartz and Raslan [37] examined
25 the impact of building energy simulation tools on BREEAM and LEED ratings. Ng [52] tried to find out the
26 properties and standards of various building environmental assessment ratings on evaluating carbon emissions.
27 Besides research papers, projects focusing on sustainable indicators for buildings had also been carried out. For
28 example, SuperBuildings project funded by European Commission was conducted during 2010-2012 by leading
29 European organizations and companies [53]. However, this project focused more on the European context where
30 BREEAM is accounting for 80% of the market [43, 54-56], which may not provide an inclusive view. This
31 paper, therefore, aims to develop a systematic review of the development of green rating systems focusing on
32 the well-known global schemes with LEED in the Americas, BREEAM in the Europe, CASBEE in the Asia,
33 and Green Star in the Australasia. The specific objectives are:

- 34
- 35 1. Discover how interest and research in green rating systems have developed
- 36 2. Identify the similarity, difference, strength, and weakness of green rating systems
- 37 3. Examine whether they fully assess the projects in all aspects of sustainability.
- 38

39 2. GREEN VS SUSTAINABLE BUILDINGS

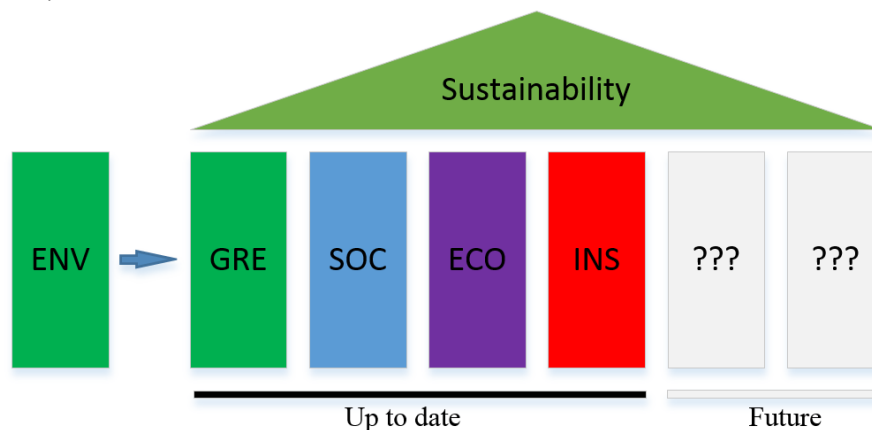
40
41 *Green* and *Sustainable* building have been used interchangeably [10, 40, 41, 57], but these two terms are far
42 from synonymous [40, 41, 57]. Cole [58] described *Green* as “*building design strategies that are less*
43 *environmentally and ecologically damaging than typical practice*” [59, 60] in 1999. While Kua and Lee [61],
44 and Yoshida and Sugiura [62] defined *Green* building as “*one that meets certain criteria for environmental*
45 *performance*” [61]. In 2008, it was indicated that *Green* is “*a term encompassing strategies, techniques, and*
46 *construction products that are less resource-intensive or pollution-producing than regular construction*” [63].
47 Howe [64] detailed it as using land and energy efficiently, conserving water and other resources, improving
48 indoor and outdoor air quality, and increasing the use of recycled and renewable materials. The concept of
49 *Green* building has been continually revised and its definition is commonly accepted as “*providing people with*
50 *healthy, applicable, efficient space and natural harmonious architecture with the maximum savings on*
51 *resources (energy, land, water, materials), protection for the environment and reduced pollution throughout its*
52 *whole lifecycle*” [65-67].

53
54 The definition of *Sustainability* has also suffered from ambiguity and uncertainty [41, 68, 69]. New definitions
55 incorporating over 100 concepts have been given [41]. One of the earliest of its definitions was given by
56 Brundtland Commission in 1987, which stated that “*sustainable development is a development which meets the*
57 *needs of the present without compromising the ability of future generations to meet their own needs*” [41, 70,
58 71]. Although *Sustainability* has been defined concerning diverse aspects, environmental, social, and economic
59 impacts are its three main pillars [72-77]. Recently, the fourth pillar, institutional dimension, has gained
60 increasing recognition [75, 78-80]. Institution was introduced as the fourth pillar in 1995 by the Commission on

1 Sustainable Development [81]. It is defined as “the results of interpersonal processes, such as communication
 2 and co-operation, resulting in information and systems of rules governing the interaction of members of a
 3 society” [82]. Its indicators, used to evaluate the institutional sustainability, were suggested by the United
 4 Nations focusing on several aspects such as a participator political system, non-discriminatory education, social
 5 security systems, gender equity etc. [81, 83].

6
 7 It is clear that the concepts for both *Green* and *Sustainability* are simple and can be considered vague in the
 8 beginning. However, they can be clarified in detail step by step. There are factors created to evaluate how *Green*
 9 buildings are more environmental and ecological than the traditional ones such as energy, land, water, and
 10 materials. While four main pillars are identified to determine the *Sustainability* of a project. It is noticed that
 11 although the definition of *Green* has still been developing, the environment is always its core. Whereas,
 12 *Sustainability* could be considered as a non-stop development concept depending on the sustainable building
 13 practices. This is because *Sustainability* is multi-interpretations and an interdisciplinary concept [81, 84], and
 14 the difference in current sustainable construction practices is occurring due to the various concepts of
 15 sustainable construction among countries [85]. Wangel [86] stated that *Sustainability* should be a normative
 16 concept established for a particular purpose than defining inductively. Shari and Soebarto [60] believed that
 17 *Sustainability* could embrace all facets of human activity, and Yanarella [57] considered it as a concept tied to
 18 the whole systems.

19
 20 Up to date, *Green* (GRE) buildings embrace environmental improvements while *Sustainable* buildings focus on
 21 four main pillars, including environmental (ENV), social (SOC), economic (ECO), and institutional issues (INS)
 22 [78], see Figure 1. With the continuous update on the definition, it is anticipated that more and more pillars will
 23 be established to assess the *Sustainability* of building practices. Council [87], Cities and Governments [88]
 24 suggested *Culture* could be the next dimension of *Sustainability* while Redclift [89] determined *Epistemology* is
 25 one of *Sustainability*'s dimension.



26
 27 **Figure 1. Sustainable framework**
 28

29 **3. GREEN RATING SYSTEMS**

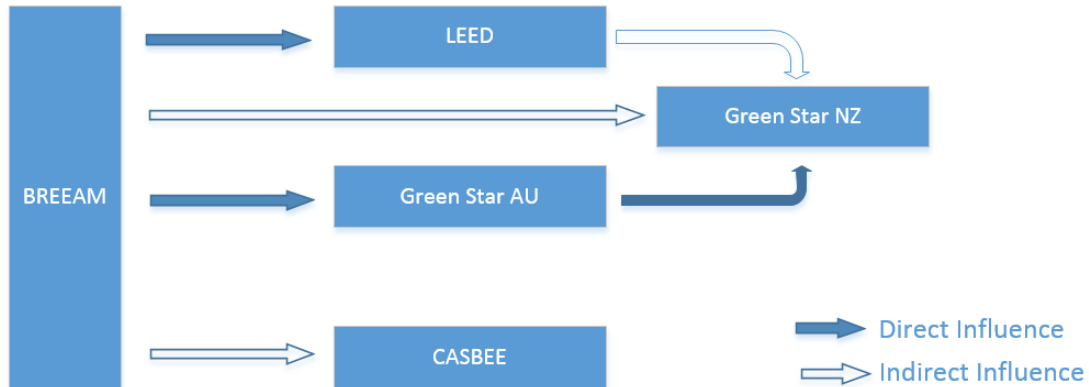
30 During this study, BREEAM, LEED, CASBEE, and Green Star NZ, were analysed in detail. The rationale to
 31 select these rating systems is based on considering BREEAM, LEED, and CASBEE as globally well-known
 32 leading ones alongside Green Star NZ, which in comparison is a relatively new system that has recently released
 33 its latest version and New Zealand has subsequently seen a significant increase in the number of registered green
 34 buildings.

35
 36 **3.1. BREEAM**

37 BREEAM is seen as the first green building rating assessment in the world, launched and operated by BRE
 38 (Building Research Establishment) in the UK [32-34]. It was introduced to the market in 1990 and was first
 39 revised to assess offices in 1993 [33, 90]. It is widely accepted that almost all later major green rating systems
 40 such as LEED, Green Star, and CASBEE are under the influence of BREEAM (Figure 2).

41
 42 BREEAM is widely used owing to its flexibility. It not only assesses local codes and conditions but also allows
 43 application in international buildings [91]. In addition, BREEAM enables evaluation of a building's lifecycle in
 44 view to design, built, operation and refurbishment; BRE provides New Construction, In-use, Refurbishment and
 45 Fit-Out, Communities, and Infrastructure manuals for planners, local authorities, developers, and investors. As a
 46 result, BREEAM has so far issued over 560,000 certifications [43]. This number is anticipated to follow its
 47 increasing pattern (from 250,000 buildings in 2014 [92] to 425,000 buildings in 2015 [93], and 540,000

1 buildings in 2016 [56]). A similar incremental pattern applied to the number of countries adapting BREEAM
 2 since 1990 (50 countries in 2014 [92], 70 countries in 2016 [56], and over 75 countries in 2017 [43, 94]).
 3 BREEAM certifications accounts for 80% of the European market share for sustainable building certifications
 4 [43, 54, 55, 95]. Although all of the sustainability pillars could be assessed by BREEAM, the environmental
 5 factor is still predominant with eight main categories including *Management, Energy, Transport, Water,*
 6 *Materials, Waste, Land Use & Ecology, and Pollution.*
 7



8
 9 **Figure 2. The relationship among green ratings (adapted from Mao [96])**

10
 11 **3.2. LEED**

12 LEED is a voluntary standard developed by USGBC (US Green Building Council) [97, 98]. It was first
 13 launched in 1998 with a pilot version (LEED 1.0) [99, 100]. Although it was released after BREEAM, it is
 14 considered as the most widely adopted rating scheme based on the number of countries, with over 79,000
 15 projects [42, 101, 102] across 135 countries in 2012 [103, 104], reaching nearly 150 countries and territories in
 16 2014 [92], and over 160 countries and territories at present [42]. The square footage of LEED-certified projects
 17 has risen dramatically during 2008-2016 (approximately 100%), from around 0.15 billion to over 15 billion
 18 square feet [42, 96]. Similar to BREEAM, LEED predominantly evaluates environmental factors including
 19 *Sustainable Sites, Water Efficiency, Energy and Atmosphere, Material and Resources, and Indoor Environment*
 20 *Quality categories.* All of the building's lifecycle could be evaluated based on the criteria from Building Design
 21 and Construction, Interior Design and Construction, Building Operations and Maintenance, Neighbourhood
 22 Development manuals.
 23

24 **3.3. CASBEE**

25 CASBEE was developed by the collaboration of academia, industry, and the local governments in 2001 in Japan
 26 [105, 106]. Owing to its limitation to Japanese context, the number of certified buildings is still modest (330
 27 buildings since 2004) [105]. However, it is the rating which evaluates the broadest context (Figure 3) and started
 28 releasing a pilot version for worldwide use in 2015. CASBEE could assess the buildings starting from the design
 29 to the renovation with criteria from CASBEE Buildings, CASBEE for Commercial Interiors, and CASBEE for
 30 Temporary Construction manuals. While CASBEE for Urban Development and CASBEE for Cities manuals are
 31 used as frameworks to evaluate a group of buildings.
 32

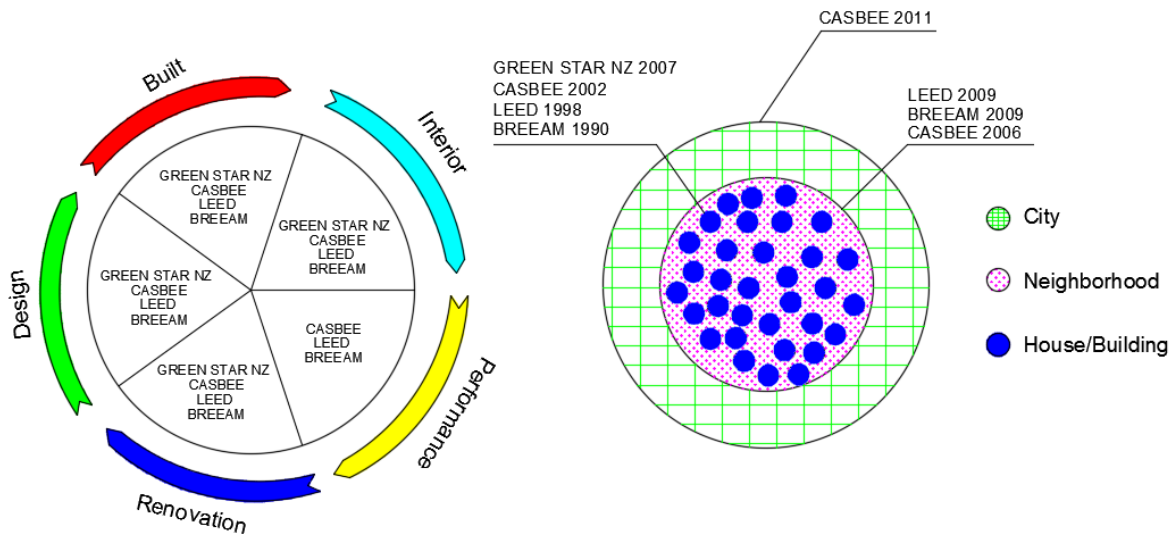


Figure 3. Overview of green rating tools

3.4. Green Star NZ

The Green Star NZ rating scheme was first launched in 2007 by NZGBC (New Zealand Green Building Council), based on the Australian Green Star [45]. Compared to the rating schemes above, Green Star NZ is the youngest. It is the only one that does not provide a manual to assess the building during its performance phase (Figure 3). Since it has been in the market for a decade only, the number of certified buildings is still limited. However, it has seen a positive trend (10 times increase since 2009) to reach 125 certifications [107].

3.5. OVERVIEW OF BREEAM, LEED, CASBEE, AND GREEN STAR NZ

BREEAM, LEED, and Green Star NZ were established by non-profit third parties, while the government plays a dominant role in CASBEE besides the industry and academia. Due to the collaborations among various parties, CASBEE could receive the feedbacks and consider them for future updates more frequently, precisely, and thoroughly. This could be a reason why CASBEE is considered as a leader in the assessment of comprehensive area development projects. This includes a group of buildings or a city with the release of *CASBEE Urban Development CASBEE City* (see Figure 3), even though CASBEE was established after the leading global rating systems BREEAM and LEED a decade and half of a decade, respectively. Green Star NZ is the latest established rating systems compared to BREEAM, LEED, and CASBEE. Consequently, though it could evaluate the majority of the whole life cycle of a project, operation stage assessment is still not covered (see Figure 3).

The main features of BREEAM, LEED, CASBEE, and Green Star NZ are shown in Table 1. It is clear from the Table that all of these four rating schemes just released their latest versions recently. Although the latest version of LEED was released four years ago, it has the new update in 2017 [108]. This proves that all of the rating systems are making efforts to revise and update their criteria more frequently to follow immediately with the rapid development of sustainable construction.

Table 1. Main features of BREEAM, LEED, and Green Star NZ

	BREEAM	LEED	CASBEE	Green Star NZ
Country	UK	US	Japan	NZ
Organizations	BRE	USGBC	JSBC	NZGBC
Flexibility	77 countries	160 countries	1 country	1 country
First version	1990	1998	2002	2007
Latest version	2016	2013	2015	2016

Main categories	Management	Integrative process		
	Health & Wellbeing	Indoor Environment		Management
	Energy	Quality		Indoor Environment
	Transport	Energy & Atmosphere	Indoor Environment	Quality
	Water	Location & Transportation	Quality of Service	Energy
	Material	Water	On-site Environment	Transport
	Waste	Efficiency	Energy	Water
	Land Use & Ecology	Material & Resources	Resources & Materials	Material
	Pollution	Sustainable Sites	Off-site Environment	Land Use & Ecology
	Innovation	Regional Priority		Emissions
		Innovation		Innovation
Rating approach	Pre-weighted categories	Additive credits	BEE ranking chart	Pre-weighted categories except for Innovation
Rating level	Pass ≥ 30		Poor: BEE <0.5	
	Good ≥ 45	Certified ≥ 40	Fairy Poor: BEE=0.5-1.0	Best practice ≥ 45
	Very good ≥ 55	Silver ≥ 50	Good: BEE=1-1.5	Excellent ≥ 60
	Excellent ≥ 70	Gold ≥ 60	Very good: BEE=1.5-3; or BEE ≥ 3 and Q <50	Leadership ≥ 75
	Outstanding ≥ 85	Platinum ≥ 80	Excellent: BEE ≥ 3 and Q ≤ 50	
Number of certified buildings	561,600	79,100	541	125

1
2 The flexibility or the application of CASBEE and Green Star NZ is still limited; it is suggested that they are
3 only capable of domestic projects leading to the modest certified projects, with 541 for CASBEE and 125 for
4 Green Star NZ. This is because CASBEE and Green Star NZ were just established around a decade ago and they
5 are still at the earlier stages compared to BREEAM and LEED. A pilot version for worldwide use was released
6 in 2015 to make CASBEE more flexible to gain the widespread adoption and the number of registered projects.

7
8 BREEAM and LEED have a significant number of green certified buildings globally. Despite the different
9 regional characteristics, climate, culture, etc., countries other than the UK and the US could adopt BREEAM or
10 LEED. This is because standards used to assess green criteria could be the international standards or local
11 equivalent standards. For example, LEED states that International Society of Arboriculture using ISA standard
12 method or local equivalents could be used to assess *Sensitive Land Protection* in LEED. While BREEAM also
13 allows national or local equivalents to ISO 7730:2005 used to evaluate *Thermal Comfort* sub-category.

14
15 BREEAM and LEED differ significantly in their flexibility and the number of certified buildings. 561,600
16 buildings in total were certified by BREEAM, which is seven times higher than those for LEED. Regarding
17 geographic adoption, up to 160 countries and territories have adopted LEED for green project assessment in
18 comparison with 77 countries for BREEAM. This could be explained in three main reasons. Firstly, BREEAM
19 targets the European market where the majority of countries are well-aware of *Sustainability*. Secondly, LEED
20 is considered as a more transparent rating approach for calculating the final results, while BREEAM adopts the
21 pre-weighted categories method which is more complex and stricter. Finally, BREEAM is stricter in its criteria
22 for achieving credits. It sets absolute parameters while relative percentage improvement or reduction targets are
23 employed by LEED. For example, in the sub-category of *Energy, Reduction of energy use and carbon*
24 *emissions*, BREEAM provides guidance in the form of a table for *Energy Performance Ratio for International*
25 *New Constructions* benchmark scale, in which absolute values are targeted like 0.06 for achieving one credit and
26 0.9 for achieving 15 credits. While in the sub-category accounting for the highest credits of *Energy and*
27 *Atmosphere* of LEED, *Optimize energy performance*, a table is created to compare the difference in the
28 percentage of the assessed building energy simulation with the past energy simulation analyses or published data

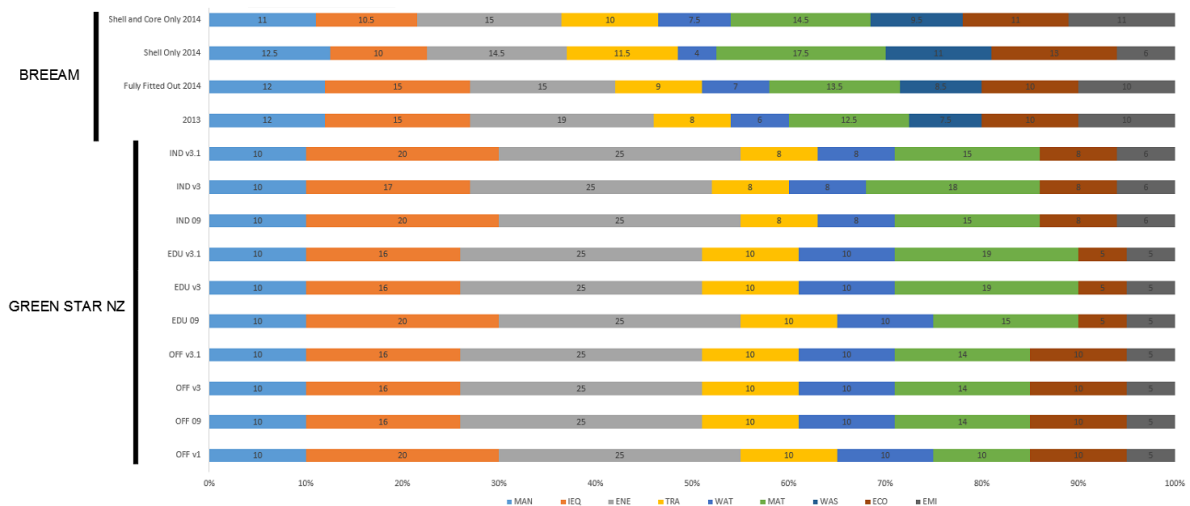
1 for similar buildings. If the simulation shows that the energy performance improves 6% for new construction,
 2 one point will be achieved for a school project, and 16 points will be attained for 42% of the improvement. As a
 3 result, BREEAM has many certified projects, but LEED gains global adoption.

4
 5 Considering the number of main categories of the four rating schemes, it is clear that BREEAM has the highest
 6 number of categories (10), which is slightly higher than those of LEED and Green Star NZ with nine categories
 7 for each. It is worth noticing that BREEAM, LEED, and Green Star NZ share the same patterns in the
 8 characteristics of categories. This is due to the strong influence of BREEAM on LEED and Green Star NZ, as
 9 demonstrated in Figure 2. Although CASBEE is affected by BREEAM, it was established by the cooperation of
 10 various parties, including the government, industry, and academia, thereby leading to the difference in the
 11 assessed categories constituting only six main categories. These rating schemes have the common categories
 12 such as *Energy* and *Material*, even though they are created based on their local contexts. This proves that these
 13 same categories are the global concerns and should be considered thoroughly.

14
 15 In view of the rating approach, LEED adds all credit points to sum up the final grade while BREEAM and
 16 Green Star NZ pre-weight the categories before adding them up. Figure 4 shows the weightings of Green Star
 17 NZ and BREEAM.

18
 19 The weightings for Green Star NZ depend on projects types (Office, Education or Industry). For example, in an
 20 *Education* project, *Material* constitutes a higher percentage than the one in an *Office* or an *Industry* project.
 21 Likewise, *Indoor Environment Quality* is a more significant point of focus in *Industry* projects compared to the
 22 others.

23
 24 BREEAM further categorizes projects into *Shell and core only*, *Shell only*, and *Fully fitted out*. Although
 25 BREEAM's and Green Star NZ's weightings are created based on two different local contexts and standards,
 26 they have the same common in the weightings of characteristics. It is clear that *Energy* is the most important
 27 category in both ratings, accounting for the highest proportion of the weighting scale. In other words, *Energy* is
 28 seen as the priority criterion compared to the others. This is understandable due to the excessive energy
 29 consumption of the construction industry. According to EIA (Energy Information Administration), buildings
 30 constituted almost a third of the global energy consumption [109, 110]. Based on the IPCC (Intergovernmental
 31 Panel on Climate Change) AR5 (Fifth Assessment Report), buildings consumed 32% of global energy and
 32 emission of 19% of energy-related greenhouse gases [111]. Also, buildings were responsible for 40% of the EU
 33 energy consumption [112].



35
 36
 37
 38 **Figure 4. Green Star NZ's and BREEAM's weightings**

39 Besides the importance of the *Energy* criterion, the weighting scales for *Material* and *Indoor Environment*
 40 *Quality/Health & Wellbeing* also reflect their major priorities in the building evaluation compared to other
 41 criteria. The building construction industry is responsible for a substantial proportion of the global raw material
 42 consumption exploiting 25% of wood harvest; 40% of stone, sand, and gravel, and 16% of water [113-115],
 43 thereby leading to the high weighting scale in *Material*. Whereas *Indoor Environment Quality/Health &*
 44 *Wellbeing* focuses on the wellbeing and health issues of building occupants [116, 117]. This is considered as a
 key role in defining *Green* as: “providing people with healthy, applicable, efficient space and natural

1 *harmonious architecture*” [65-67]. Therefore, the weighting for *Indoor Environment Quality/Health &*
2 *Wellbeing* is highlighted.

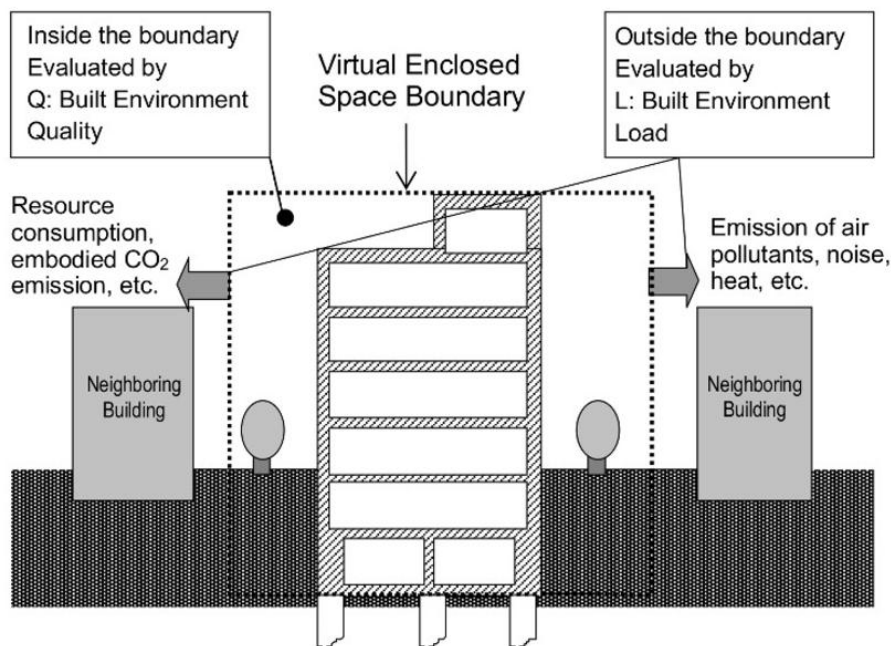
3

4 In any manual version of BREEAM or Green Star NZ, *Energy, Material, and Indoor Environment*
5 *Quality/Health & Wellbeing* are prioritized. However, in the later versions, the weighting percentages of *Energy,*
6 *and Indoor Environment Quality/Health & Wellbeing* tend to reduce. In contrast, those of *Material* show an
7 opposite tendency. For example, 20% is the figure of *Indoor Environment Quality* of *Office* version 1, which
8 reduces to 16% in the next three versions, as opposed to *Material* with a growth by 4% in *Office* version 09,
9 version 3, and version 3.1. This could be explained that previous building practices might show a positive trend
10 toward *Energy and Indoor Environment Quality/Health & Wellbeing*, while *Material* had not caught much
11 attention yet. These weightings have a strong influence on the final results of BREEAM and Green Star.
12 BREEAM and Green Star follow a similar approach to determine the final results based on “pre-weighted
13 categories”. Points will be given for each sub-category which are then summed up for total points of each
14 category. As individual categories have their own weighting scale (e.g. Figure 4), the total point of each
15 category will be multiplied by the weighting scale which is equivalent to the category before adding up for the
16 final results. In spite of this, LEED uses a simpler method called “additive credits”, where all credits are just
17 added up to calculate the final results regardless of the weightings.

18

19 In contrast to the rest, the assessment results for CASBEE are calculated in a complex way. It is worth noticing
20 that CASBEE has a different approach to calculating the final results. Instead of separating credits into different
21 green categories such as energy, transportation, etc., CASBEE evaluates two spaces, internal and external,
22 divided by the virtual boundary, see Figure 5 [105]. In other words, CASBEE evaluates two factors, Q (Built
23 Environment Quality) and L (Built Environment Load). Q is used to assess “improvement in everyday amenity
24 for the building users, within the virtual enclosed space boundary” [105] while L is used to assess “negative
25 aspects of environmental impact that go beyond the virtual enclosed space boundary to the outside (the public
26 property)” [105]. Credits for Q and L are calculated before putting on a BEE (Built Environment Efficiency)
27 chart which is divided according to the line gradient (Figure 6) for the final results or calculating by the equation
28 $BEE=Q/L$. An example is displayed in Figure 5 in which $Q=80$ and $L=34$. The point (80, 34) is in A gradient
29 translated as a *very good* building in Figure 5.

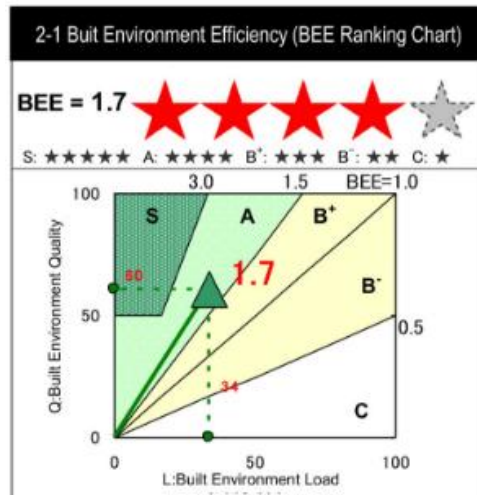
30



31

32 **Figure 5. Built Environment Quality and Built Environment Load [105]**

33

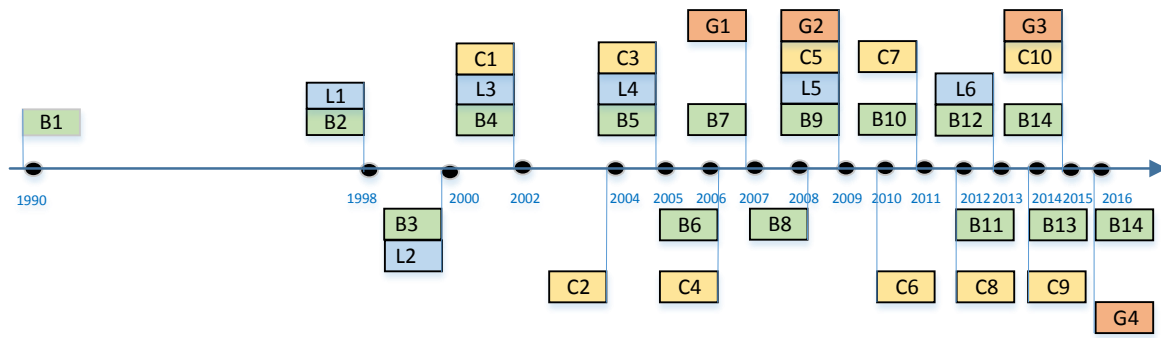


S: Excellent A: Very good B+: Good B-: Fairly poor C: Poor

Figure 6. BEE ranking chart

A timeline of developments for the discussed four rating systems is displayed in Figure 7. It is noticeable that, since 2005, they all have been furnished with new tools, most especially BREEAM with almost a new update every year. In contrast to BREEAM and CASBEE, LEED and Green Star NZ have updated their tools synchronously.

Although these four schemes are voluntary tools, they are being used as a mandatory requirement in some regions or for particular purposes. BREEAM assessment is a mandatory requirement to achieve funding from Department of Health and Education in the UK [118]. San Francisco is the first state in the U.S. which required high-rise residential projects to be certified LEED silver by 2010 [119]. CASBEE assessment results have been used as a mandatory for building permits by some local Japanese governments [120], whereas Auckland Council has included requirements for Green Star NZ in the Proposed Unitary Plan [45].



B1	B2	B3	B4	B5	B6	B7
BREEAM 1990	BREEAM 1998	BREEAM 2000	BREEAM 2002	BREEAM 2005	BREEAM 2006	BREEAM 2008
B8	B9	B10	B11	B12	B13	B14
BREEAM 2009	BREEAM 2011	BREEAM 2012	BREEAM 2013	BREEAM 2014	BREEAM 2015	BREEAM 2016
L1	L2	L3	L4	L5	L6	
LEED 1.0	LEED 2.1	LEED 2.2	LEED 1.0	LEED 2.1	LEED 2.2	
C1		C2		C3		
CASBEE for Building (New Construction)		CASBEE for Building (Existing Building)		CASBEE for Building (Renovation)+CASBEE for Heat Island		
C4		C5		C6		
CASBEE for Urban Development		CASBEE for Detached House (New Construction)+CASBEE for Urban Development		CASBEE for Heat Island+CASBEE School+CASBEE for Building		
C7		C8		C9		
CASBEE for Detached House (Existing Building)+CASBEE for Cities		CASBEE for Market Promotion+CASBEE for Cities		CASBEE for Detached House+CASBEE for Building+CASBEE for Market Promotion+CASBEE for Urban Development		
C10						
CASBEE for Cities						
G1		G2		G3		G4
Green Star v1		Green Star 2009		Green Star v3		Green Star v3.1

Figure 7. BREEAM, LEED, CASBEE, and Green Star timeline

4. RESEARCH METHODOLOGY

This research utilized a two-step approach to review green certifications comprehensively, see Figure 8.

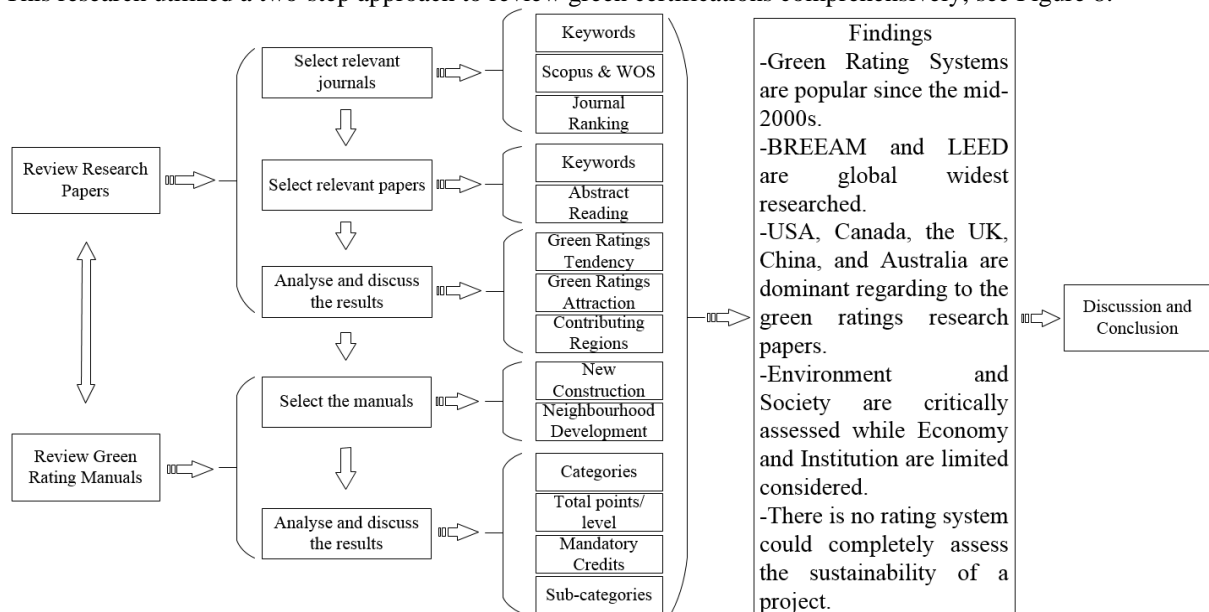


Figure 8. Methodology steps

1
2
3
4
5

6
7
8

- 1 a. Initially, a systematic desktop search was carried out via major scientific databases namely, Scopus and
 2 Web of Science (WOS), to identify the relevant journals for this study. WOS and Scopus are seen as
 3 the most widespread databases covering publications in various fields [121]. WOS has a strong
 4 coverage with papers published since 1990 and English is the main language in its most journals while
 5 a superior number of journals is covered by Scopus [122]. To narrow the selected journals which
 6 published many relevant papers, search keywords, including “LEED”, “BREEAM”, “CASBEE”,
 7 “Green Star NZ”, “Green Building”, and “Sustainable Building” were used under the “article
 8 title/abstract/keywords” field for Scopus and “Title” for WOS. Journals publishing the largest number
 9 of papers in these fields were identified as Energy and Buildings (E&B), Building and Environment
 10 (B&E), Automation in Construction (A&C), Building Research and Information (BR&I), International
 11 Journal of Sustainable Building Technology and Urban Development (SBT&UD), Journal of Cleaner
 12 Production (CP), Environmental Impact Assessment Review (EIAR), and Renewable and Sustainable
 13 Energy Reviews (R&SER). They are also high-ranking journals in the construction field which are
 14 ranked by Scimago Journal & Country Rank (<http://www.scimagojr.com/>), see Table 2. Therefore, they
 15 are the mainstreams chosen for reviewing.
 16
 17

Table 2. Ranking of selected journals

Areas	Journals	Rank
Building and Construction	B&E	3
	E&B	5
	A&C	13
	BR&I	15
	SBT&UD	115
Renewable Energy, Sustainability and the Environment	CP	21
	R&SER	5
Management, Monitoring, Policy and Law	EIAR	24

18 Due to the popular use of the chosen search keywords, irrelevant papers are possibly available in the
 19 results. Thus, abstracts were read to filter out the irrelevant papers. Unless the papers mainly focused
 20 on the green rating systems, they will be excluded. The aim of this first step is to a) observe the
 21 development of green rating systems, b) find out how they are popular in the research, c) discover
 22 which rating is more globally recognized, d) locate the countries concerning about green building.
 23
 24

- 25 b. In a latter step, manuals of BREEAM, LEED, CASBEE, and Green Star NZ were examined to
 26 determine their developments, similarities, and differences along with their strengths and weaknesses
 27 to determine their support to sustainability. *New Construction* manuals and *Neighbourhood*
 28 *Development* manuals were investigated in this paper. *New Construction* manuals represent for a new
 29 individual building assessment guidance. It aims to “mitigate the life cycle impacts of new buildings on
 30 the environment in a robust and cost-effective manner” [117]. While *Neighbourhood Development*
 31 manuals represent for a large-scale development plans guidance. It “provides a framework to planners,
 32 local authorities, developers, and investors through the master planning process, before embarking on
 33 procurement, detailed building level design and construction” [123]. All of the examined manuals are
 34 indicated in Table 3.
 35
 36

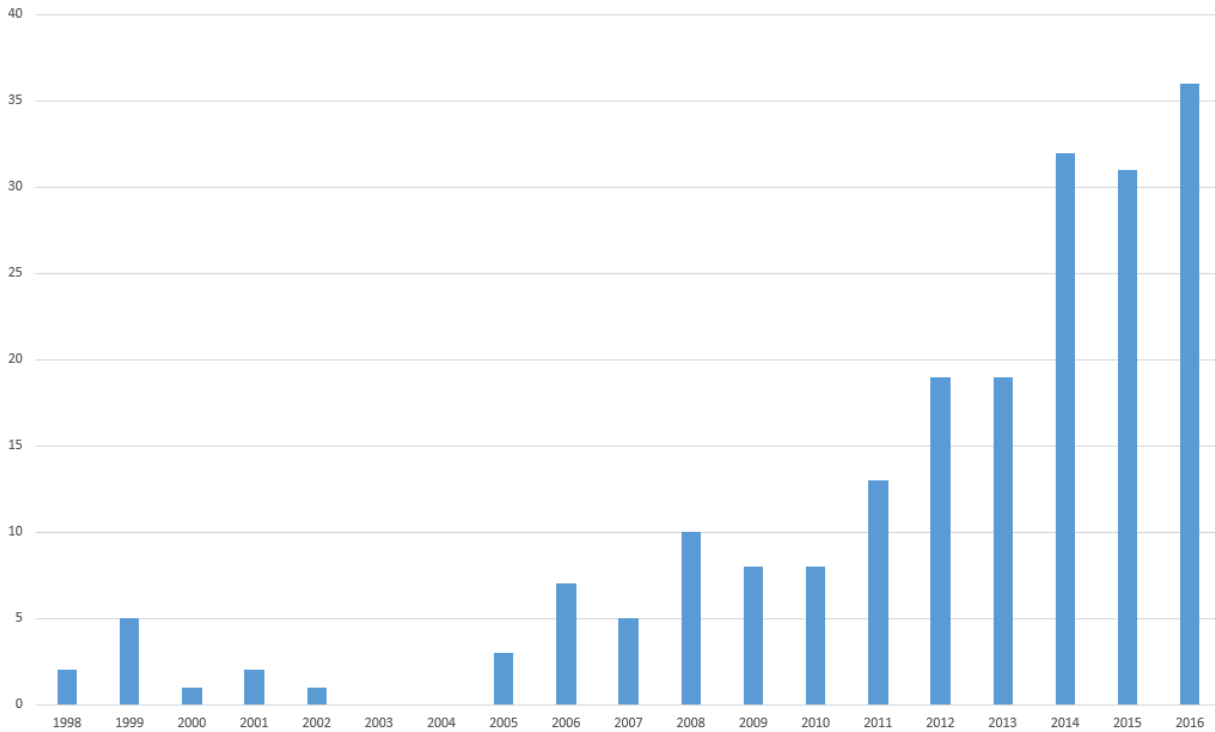
Table 3. Selected manuals of BREEAM, LEED, CASBEE, and Green Star NZ

Manuals	BREEAM	LEED	CASBEE	Green Star NZ
New Construction	2006	2.0	2014	v1
	2008	2.1		2009
	2011	2.2		v3
	2013	v3		v3.1
	2014	v4		
	2016			
Neighbourhood Development	2012	v4	2014	

37 5. RESULTS and ANALYSES

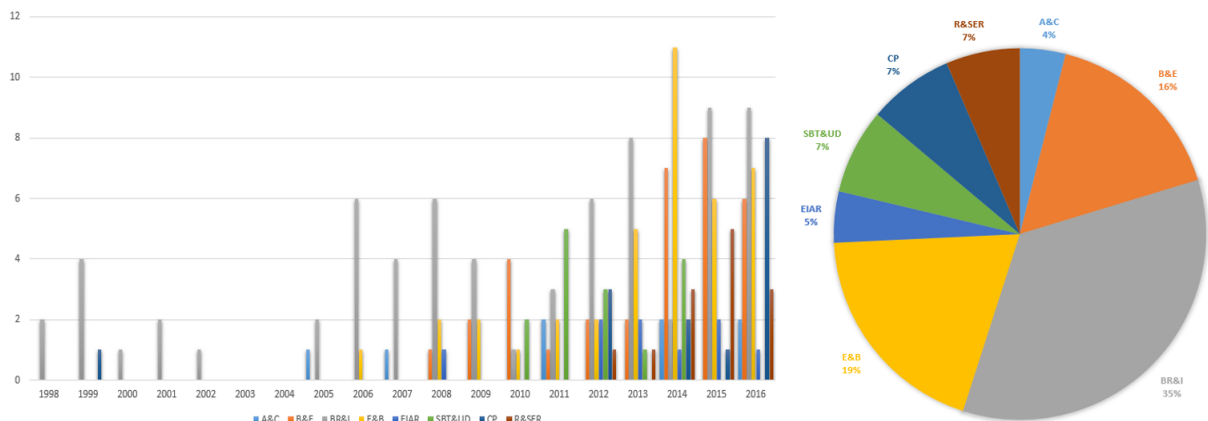
38 5.1. Selection of Relevant Papers

1 A total of 408 papers were identified in the above-mentioned eight journals; however, 206 papers were
 2 delimited as none of BREEAM, LEED, CASBEE, or Green Star NZ were the main focus. It was discovered
 3 that the first set of LEED and BREEAM related papers were published in 1998, see Figure 9. This field attracted
 4 the attention of researchers by the end of the 2000s. The number of published papers increased dramatically
 5 from 8 papers in 2010 to 36 papers in 2016.
 6



7 **Figure 9. BREEAM, LEED, CASBEE, and Green Star NZ related papers published from 1998 to 2016**

8
 9
 10 BR&I contributed the highest number of papers, accounting for 35% of total papers in eight selected journals
 11 (Figure 10). This figure is almost double the total number of papers that E&B released during 1998-2016. A
 12 significant increase in a number of published papers was seen in E&B, B&E, and R&SER from 2013-2016 (an
 13 average of 16 paper each year for these three journals). While BREEAM, LEED, CASBEE, and Green Star NZ
 14 have just received attention recently from A&C, CP, SBT&UD, and EIAR. Except BR&I, E&B, and B&E, the
 15 rest of the journals published fewer papers, but they all shared a similar pattern, a growth in the number of
 16 papers recently.
 17

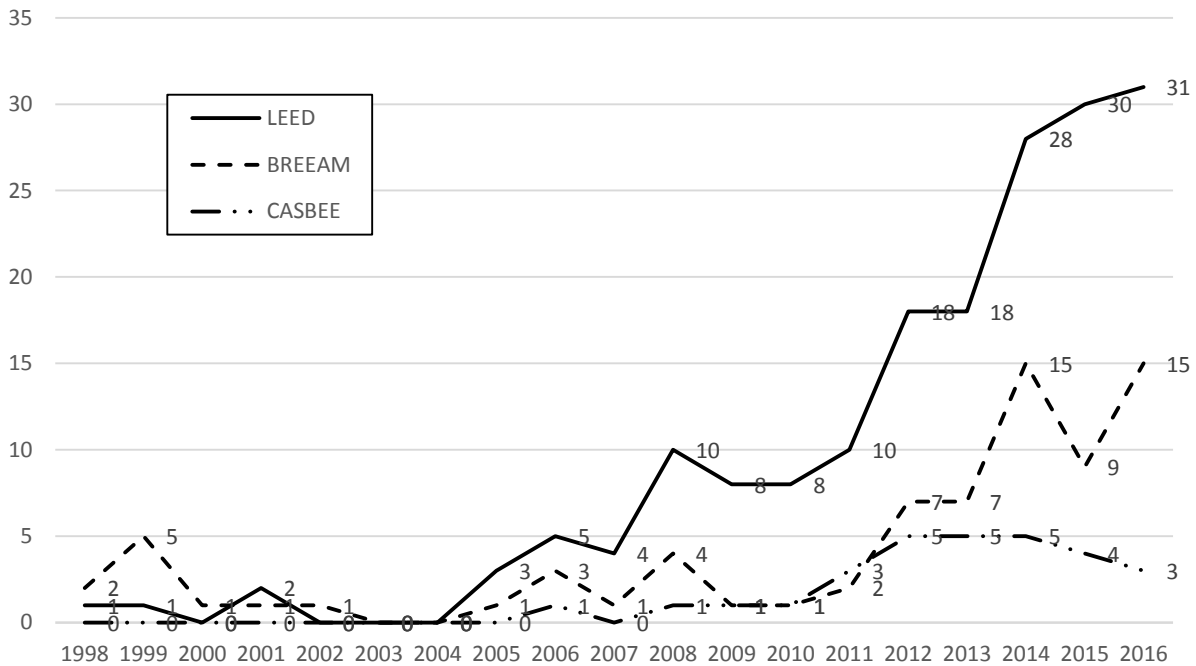


18 **Figure 10. BREEAM, LEED, CASBEE, and Green Star NZ related papers published in each selected**
 19 **journal**
 20
 21

22 **5.2. Attraction of BREEAM, LEED, CASBEE, and Green Star NZ topics**

23 Despite the use of “BREEAM,” “LEED,” “CASBEE,” and “Green Star NZ” as search keywords, no
 24 publications under “Green Star NZ” were found. This is a confirmation that Green Star NZ is still in its earlier
 25 stages compared to the rest leading to the academia’s neglect. Figure 11 shows the statistics for the papers

1 related to LEED, BREEAM, and CASBEE. LEED has attracted the most increasing attention with 63% of the
 2 total papers (36% more than BREEAM-related publications). In contrast to BREEAM and LEED, with a
 3 dramatic increase in the number of papers, the figures for CASBEE have only risen slightly at the beginning of
 4 the 2010s.



5
6
7 **Figure 11. The proportions of BREEAM, LEED, CASBEE, and Green Star NZ in the research papers**

8
9 **5.3. Contributing Regions**

10 Identifying the contributions of regions/countries on research topics in different fields have been the interest of
 11 many researchers [124-126]. Since first authors are seen as the main research contributors in scientific papers,
 12 this study examined the research origin of the first authors of the identified papers. 202 papers originated from
 13 30 countries; however, only those countries contributing two or more papers are shown in Figure 12. It is noted
 14 that almost a quarter of papers come from the USA (49 papers). Five leading countries in publications (the USA,
 15 Canada, the UK, China, and Australia) have contributed to approximately 70% of the total papers. It is worth
 16 noting that these countries are also the origins of widely utilized green rating schemes namely, LEED (USA and
 17 Canada), BREEAM (The UK), and Green Star (Australia). Furthermore, developing countries such as Turkey,
 18 India, Brazil, and Malaysia, are also aiming for green buildings.

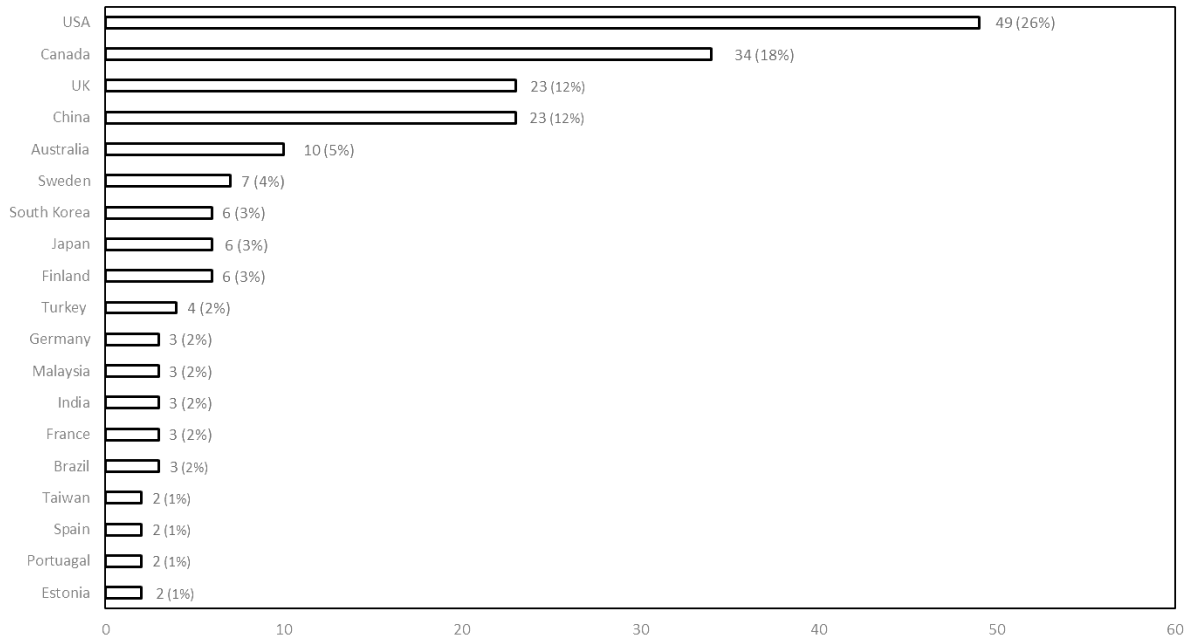


Figure 12. Research origin of BREEAM, LEED, CASBEE, and Green Star related paper published

The abovementioned statistics prove that green rating systems are globally well-known and have attracted the attention of many countries including developed and developing ones. Although BREEAM and LEED have been established for a long time, they caught the attention of researchers by the end of the 2000s, especially 2008 in which the number of LEED papers was doubled to reach ten papers per year, while BREEAM's and LEED's figures were also increased.

5.4. Comparison of BREEAM, LEED, CASBEE, and Green Star NZ

5.4.1. New Construction manuals

This research compared *New Construction* manuals of the discussed green building rating systems (Figure 13). Although different terminologies were used to describe BREEAM's, LEED's, CASBEE's, and Green Star's assessment criteria, they generally share common purposes, focusing on environmental concerns, especially in BREEAM, LEED, and Green Star NZ. *Indoor Environment Quality*, *Energy*, and *Material* criteria are all assessed under these four systems which proves that they are global concerns. Also, the total points for each category of *Indoor Environment Quality*, *Energy*, and *Material* are higher than those of the rest ones. In other words, these categories are the main focus, and they are promoted by international organizations.

Establishing by non-profit organizations and strongly depending on BREEAM, LEED and Green Star NZ have similar categories and total points with BREEAM as opposed to CASBEE. About the total points, BREEAM, LEED, and Green Star NZ have around 150 points on the average. It is worth noticing that the later of the version released, the more total points could be achieved. LEED has the most notable increase in points, from 69 points in version 2 to 145 points in version 4. BREEAM and Green Star NZ followed the same approach in their latest version with their total points increased by over 15 points accumulating to 159 and 153 respectively. This means that the evaluation of the rating systems is gradually comprehensive. Taking BREEAM for example, the total points of *Material* in *International New Construction 2013* are 11 which then increased by one in *International New Construction 2016*. In the sub-category namely *Responsible sourcing of construction product*, *International New Construction 2016* assesses not only three credits which are same with 2013 manual but also one more credit for sustainable procurement plan.

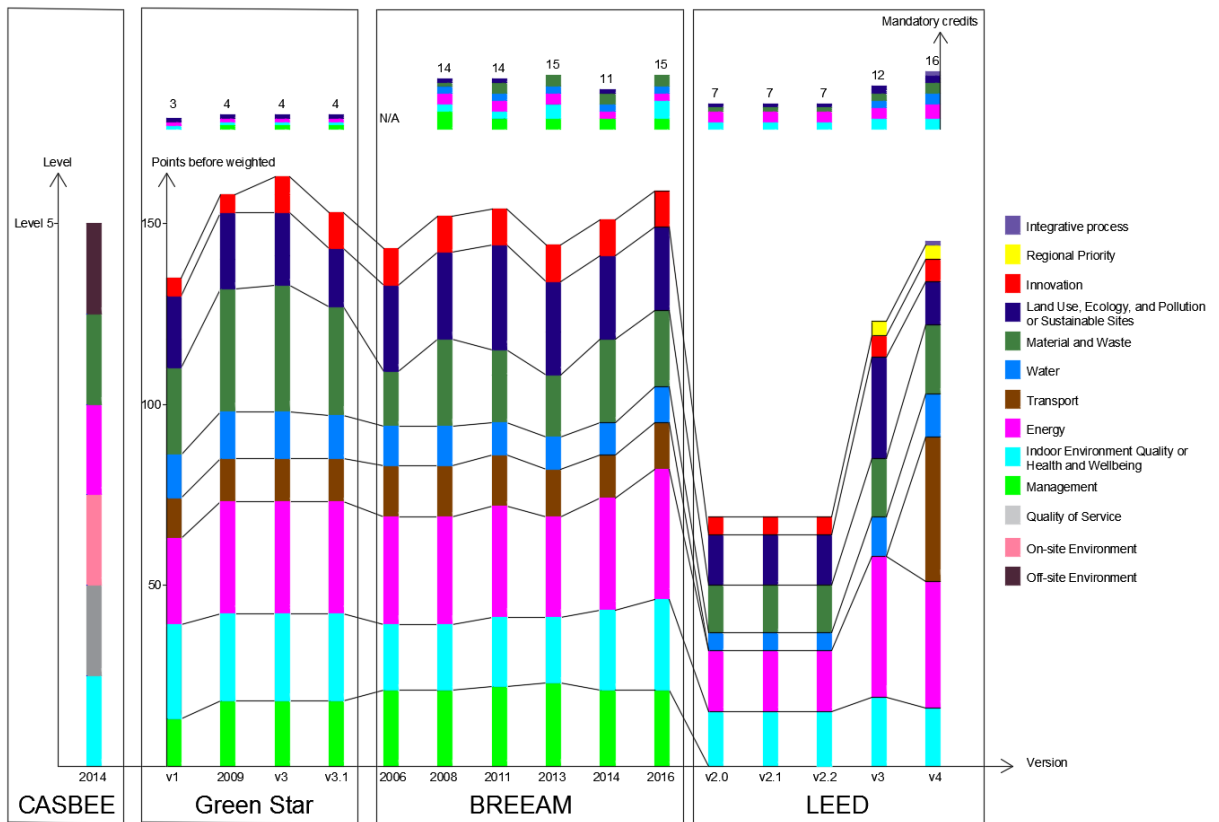
While points are gained for the assessment process of BREEAM, LEED, and Green Star NZ, levels are determined for CASBEE evaluation. Point achievement could be seen as a flexible assessment method which does not have any particular maximum points. These points are earned based on the important of the criteria. In *Energy* of Green Star NZ version 3.1, for instance, total points achievement could be 10 for the first sub-category, but it is only one for the second sub-category. It means that the important of the first sub-categories is much higher than that of the second sub-category. This is opposite with CASBEE in which levels are given in a particular range. Five levels are granted from Level 1 to Level 5. Level 1 is earned when the minimum conditions requirement is satisfied, and Level 3 represents the achievement of the ordinary technical and social

1 practices at the time of assessment. Despite the different important of sub-categories, five is the maximum level
 2 that each sub-category of CASBEE could be attained. Put differently, the level or the important of each sub-
 3 category is equal in CASBEE system in case weighting coefficients are not taken into account, which is totally
 4 opposite with BREEAM, LEED, and CASBEE.

5
 6 In view to the mandatory credits, ensuring a project achieves a certain minimum score in each category,
 7 BREEAM, LEED, and Green Star NZ increased their credits to prevent *greenwash action*. Greenwash action is
 8 defined as “the use of public relations or marketing in order to promote a misleading perception that a
 9 company’s policies or products are environmentally friendly” [127]. In other words, mandatory credits are
 10 created to prevent plans achieving green certifications by applying for the least necessary credits. Despite a big
 11 difference regarding the total number of mandatory credits in BREEAM and Green Star NZ, they both have the
 12 same tendency (a slight increase towards the mandatory credits in their updated versions). BREEAM and LEED
 13 share a similar figure in the number of mandatory credits in the latest version while the figure for Green Star NZ
 14 is still modest. It is clear from the schemes that *Indoor Environment Quality* and *Energy* are key categories,
 15 accounting for a considerable number of points and including mandatory credits in any versions.

16
 17 Although BREEAM, LEED, and Green Star NZ include a combination of mandatory and non-mandatory
 18 credits, they have a different approach for the result calculation. Points could be achieved if a project satisfies
 19 the requirement for mandatory credits in BREEAM and Green Star NZ as opposed to LEED when no point is
 20 allocated for those credits but it is compulsory to comply with the credits.

21



22
 23 **Figure 13. A comparison of New Construction manuals**

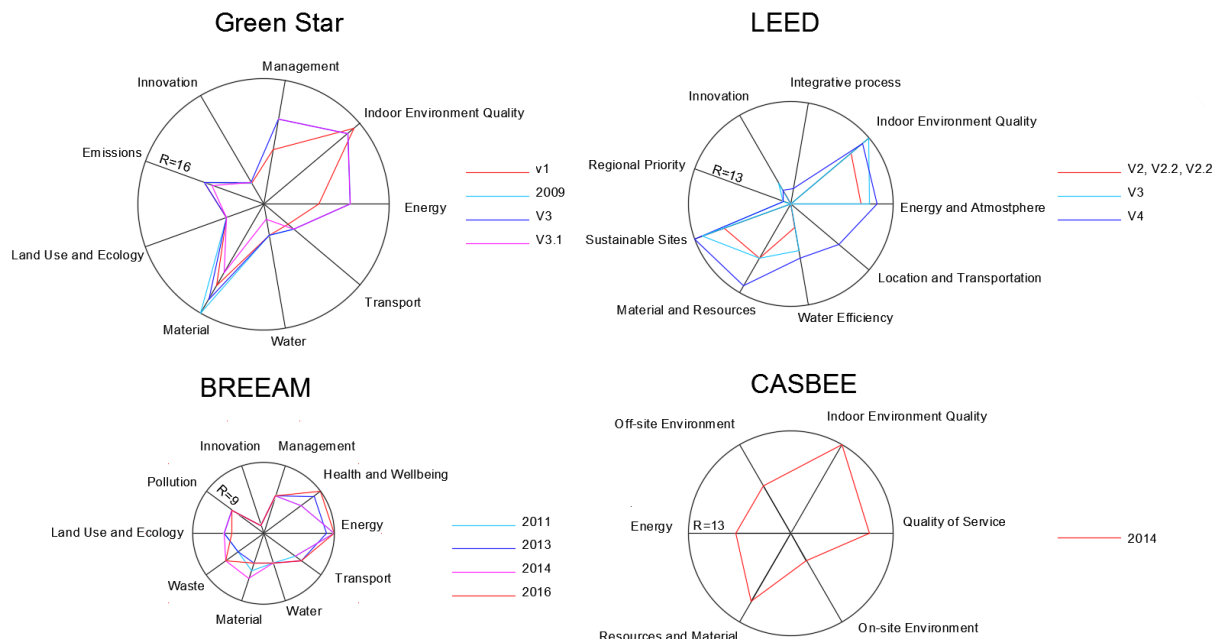
24
 25
 26 This research also investigated the development of sub-categories in these green rating systems (Figure 14). It is
 27 noted that there is a slight rise towards the total number of sub-categories of BREEAM, LEED, and Green Star
 28 NZ in the later versions, especially with the release of two new categories in LEED version 4, namely
 29 *Integrative Process* and *Location and Transportation*. The categories of these rating systems are analysed in
 30 more detail in which more sub-categories are created to assess projects in every angle of the category with the
 31 development and the release of new versions of manuals. *Energy* is again emphasized with the rise in sub-
 32 categories among BREEAM, LEED, and Green Star NZ. Besides, BREEAM, LEED, and Green Star NZ also
 33 have a common increase in the number of *Transport* sub-categories.

34

1 It is worth noting that despite the strong dependence on BREEAM, LEED and Green Star NZ have a different
 2 way towards the total points and sub-categories breakdown. BREEAM, LEED, and Green Star NZ have a
 3 similar total of points, but the total sub-categories of BREEAM are much lower than those of LEED and Green
 4 Star NZ, see Figure 14. In other words, more points can be achieved in each sub-category of BREEAM than
 5 those of LEED and Green Star NZ. Furthermore, the total sub-categories of BREEAM except for *Innovation* are
 6 fairly equal in each category as opposed to those of LEED and Green Star NZ. *Management* is promoted in New
 7 Zealand context while the US focuses on *Sustainable Sites*. However, *Indoor Environment Quality*, *Energy*, and
 8 *Material* are emphasized in both LEED and Green Star NZ.

9
 10 In CASBEE, due to the unavailability of manual in English, only *CASBEE for Building (New Construction)*
 11 2014 is considered. Having the same trend with LEED and Green Star NZ, *Indoor Environment Quality* and
 12 *Resources and Material* have the highest number of sub-categories. Besides, *Quality of Service* is taken into
 13 account in Japan context. It is worth noticing that CASBEE is the only rating system having *Earthquake*
 14 *Resistance* sub-category to cope with the high frequency of earthquake in Japan.

15
 16 Despite the influence of BREEAM, these rating systems pay attention to different categories depending on their
 17 contexts. However, *Indoor Environment Quality* and *Material* are the key common categories among all with
 18 the highest number of sub-categories.



21
 22 **Figure 14. A comparison of new construction manuals regarding sub-categories**

23
 24 All of the sub-categories were then analyzed to categorize them in sustainable pillars including *Environment*,
 25 *Society*, *Economy*, and *Institution*, see Table 4. As aforementioned, the number of sub-categories of LEED and
 26 Green Star NZ is much higher than those of BREEAM. The figures for LEED and Green Star NZ are exactly the
 27 same, with 68 sub-categories, while BREEAM and CASBEE share a common in the total sub-categories, 53 and
 28 51 respectively.

30 **Table 4. A comparison regarding sustainable aspects by sub-categories**

Sub-categories	BREEAM (53)	LEED (68)	CASBEE (51)	Green Star NZ(68)	Average
Procedural	Management ≈4 Total ≈7.5%	Integrative Process =2 Total ≈2.9%	Quality of Service ≈3 Total ≈5.9%	Management ≈10 Total ≈14.7%	7.8%

Environment	Health & Wellbeing ≈7 Energy ≈9 Transport ≈3 Water ≈4 Material ≈4 Waste ≈6 Land Use & Ecology ≈4 Pollution ≈5 Total ≈79.3%	Location & Transportation ≈3 Sustainable Sites ≈13 Water Efficiency ≈7 Energy & Atmosphere ≈11 Material & Resources ≈10 Indoor Environment Quality ≈12 Total ≈82.4%	Indoor Environment ≈13 Energy ≈7 Resources & Material ≈10 Off-site Environment ≈7 Quality of Service ≈6 Total ≈84.3%	Management ≈1 Indoor Environment Quality ≈13 Energy ≈11 Transport ≈4 Water ≈2 Material ≈9 Land Use & Ecology ≈5 Emissions ≈6 Total ≈75.0%	80.2%
	Society	Health & Wellbeing ≈2 Transport ≈3 Total ≈9.4%	Location & Transportation ≈5 Material & Resources ≈2 Regional Priority ≈1 Total ≈11.8%	Quality of Service ≈1 On-site Environment ≈4 Total ≈9.8%	Indoor Environment Quality ≈1 Transport ≈1 Material ≈1 Emissions ≈1 Total ≈5.9%
Economy	Management ≈1 Total ≈1.9%	Total =0.0%	Total =0.0%	Total =0.0%	0.5%
Extra	Innovation =1 Total =1.9%	Innovation =2 Total =2.9%	Total =0.0%	Innovation =3 Total =4.4%	2.3%

1
2 It is clear from the Table 4 that some sub-categories fall into *Procedural* in which none of *Environmental*,
3 *Social*, *Economic*, or *Institutional* factors is assessed. For example, some points can be achieved if a project
4 proves that accredited professional people participate in the project for Green Star, or the integrated design
5 process is recognized and encouraged for BREEAM and LEED. While CASBEE rewards levels for sufficient
6 maintenance plans. Approximately 15% of total sub-categories of Green Star NZ are divided into *Procedural*
7 compared to BREEAM, LEED, and CASBEE with a relatively low percentage. In other words, sub-categories
8 of BREEAM, LEED, and CASBEE are more sufficiency regarding the green or sustainable assessment in which
9 more percentage of total sub-categories is used to assess sustainable pillars.

10 *Environment* is the key factor on which all of the rating systems focus. More than 75% of total sub-categories
11 are adopted in any rating systems, around 80% on average, to evaluate *Environmental* factor. *Energy*, *Material*,
12 and *Indoor Environment Quality/Health & Wellbeing*; which are dominant in weighting coefficients, the
13 number of points, and the number of sub-categories; are all available under *Environment*. This confirms that
14 *Environment* is the main focus in the *New Construction* manuals.

15
16 Although *Society* has caught attention recently, the number of sub-categories for *Social* assessment is still
17 modest, with around five sub-categories on the average, accounting for approximately 9% of total sub-
18 categories, for these four rating systems. BREEAM is the only rating scheme considering economic aspects (2%
19 = one sub-category). Except for CASBEE, the rest three ratings have extra sub-categories for *Innovation* in
20 which more points could be achieved. These sub-categories have not been classified in any sustainable pillars.
21 *Innovation* points could be gained once a project achieves exceptional or innovative performances in which
22 these performances are not included or go beyond the requirement of the credit criteria. Therefore, depending on
23 the project stakeholders, these sub-categories could be categorized as *Environmental*, *Social*, *Economic*, or
24 *Institutional* factors. *Innovation* could improve the flexibility and capability of rating systems.

25
26
27 It is noticeable that all the rating systems except for Green Star NZ have similar figures for *Procedural*,
28 *Environment*, and *Society* despite the different local contexts which rating systems are implemented. Besides, all
29 these four schemes have failed to assess the *Institutional* pillar while *Economy* is only mildly evaluated in
30 BREEAM. It could be validated that *New Construction* tools could be only adopted to examine how green
31 buildings are and they could not be used for sustainable assessment.

32 33 5.4.2. Neighbourhood Development/Communities/Urban Development manuals

Difference with *New Construction* tool assessing individual buildings, *Neighbourhood Development/Communities/Urban Development* tools have been released to evaluate how sustainable a comprehensive area development project will be. Although CASBEE was established much later than BREEAM and LEED, it is the first organization releasing this type of tool in 2006 compared to the ones of BREEAM and LEED in 2009 (see Figure 3). Till now, Green Star NZ is still the only system which does not have a tool to evaluate a group of buildings.

A breakdown of sub-categories regarding the sustainable pillars was examined, see Table 5. LEED has the widest scope regarding the *Neighbourhood Development* with 56 sub-categories, which is 15 and 27 higher than those of BREEAM and CASBEE respectively. Compared to *New Construction*, none of the sub-categories falls into *Procedure* which is unnecessary for sustainable assessment. As shown in the names of the tools, *Neighbourhood Development/Communities/Urban Development*, *Society* is the most promoted pillar here. Over 60% of total sub-categories have been used to assess social factors in BREEAM and LEED, which doubles the figure for CASBEE.

Table 5. A comparison regarding sustainable aspects by sub-categories in neighborhood development manuals

Sub-categories	BREEAM (41)	LEED (56)	CASBEE (29)	Average
Environment	Resources & Energy ≈5 Land Use & Ecology ≈3 Total ≈19.5%	Neighborhood Pattern & Design ≈1 Green Infrastructure & Buildings ≈16 Total ≈30.4%	Resource ≈4 Nature ≈4 Artifact ≈1 Total ≈31.0%	26.97%
Society	Social & Economic Wellbeing ≈14 Resources & Energy ≈2 Land Use & Ecology ≈3 Transport and Movement ≈6 Total ≈61.0%	Smart Location & Linkage ≈14 Neighborhood Pattern & Design ≈15 Green Infrastructure & Buildings ≈5 Regional Priority ≈1 Total ≈62.4%	Impartiality/Fairness ≈2 Safety/Security ≈4 Amenity ≈4 Total ≈34.5%	52.63%
Economy	Social and Economic Wellbeing ≈3 Total ≈7.3%	Neighborhood Pattern & Design ≈2 Total ≈3.6%	Traffic/Urban Structure ≈4 Growth Potential ≈3 Energy System ≈3 Total ≈34.5%	15.13%
Institution	Governance ≈4 Total ≈9.8%	Total =0.0%	Total =0.0%	3.27%
Extra	Innovation =1 Total ≈2.4%	Innovation =2 Total ≈3.6%	Total =0.0%	2%

Although *Environment* is not the main focus in these tools, a considerable proportion of sub-categories has been still used to assess the *Environmental* factors. LEED and CASBEE share the same figure with almost a third of total sub-categories, which around 10% higher than that of BREEAM. *Urban Development* marks the impressive growth of CASBEE in *Economic* assessment. The *Economy* of a project could be assessed by over a third of sub-categories of CASBEE, while the figures for both BREEAM and LEED are still very modest. It is noticeable that CASBEE is almost equal not only in the level or the important of each sub-category but also equal in the proportions of total-sub-categories for *Environmental*, *Social*, and *Economic* assessment. CASBEE could be seen as a balanced tool in *Urban Development* assessment. BREEAM is one more time a leader of sustainable assessment when it is the only tool could measure four pillars of sustainability, with few aspects of the *Institutional* pillar.

In comparison with *New Construction*, these tools have evolved considerably to assess *Social* and *Economic* factors, 52.63% and 15.13% of total sub-categories respectively; however, it is still far ahead for these tools to be seen as sustainable assessment ones. In four pillars, only *Environment* and *Society* are paid much attention, contributing around 80% of total sub-categories, while little emphasis is placed for *Economy* and *Institution*. Limited knowledge or the vague of the sustainable concept leads to the uncertainty of the parameters in sustainable assessment could be a reason for this unbalanced focus. Compared to the rest sustainable pillars,

1 *Environment* has been defined and analysed for a long time, thereby all of the rating tools could assess the
2 *Environmental* factors properly. *Society*, the second appeared pillar, is known and analysed soon after the
3 *Environment*. This could be explained why *Society* is then promoted in *Neighbourhood*
4 *Development/Communities/Urban Development* tools while *Economy* and *Institution* have still on the way of the
5 development.

6 7 **6. DISCUSSION**

8 The comprehensive review of relevant papers provides strong evidence of the essence and the recognition of
9 green rating systems to the construction industry recently. BREEAM, LEED, CASBEE, and Green Star NZ
10 have been researched in 202 papers in eight journals during 1998-2016, and a dramatic increase in the number
11 of papers since the mid-2000s is noted. It is consistent with Eichholtz [128]'s statement in which the popular of
12 green building has greatly increased since 2000. The review confirms that BREEAM and LEED are dominant
13 regarding the breadth and a total number of papers published compared to CASBEE and Green Star NZ during
14 the research period. This could indicate that BREEAM and LEED are most widespread globally and more
15 commonly used in comparison to the other rating tools [129]. Also, the attraction of green rating systems
16 depends on their marketing as well as their transparency, which was proved by the case of BREEM and LEED
17 [130]. BREEAM focuses on the European market in which the *Green/Sustainability* definition seems to be more
18 well-aware of than the other markets, leading to the high number of certified projects. While LEED is more
19 transparency and easier to be certified than BREEAM which promotes the popular of LEED globally based on
20 the adoption of countries.

21
22 To follow the sustainable trend of building development, *New Construction* is continuously updated. More
23 points, sub-categories, and categories are added in the later versions to assess a project more comprehensively,
24 especially LEED with a double increase toward the total points and an available of two more categories in the
25 version 4. In *New Construction*, all assessment ratings concentrated mainly on *Environment* while *Society*
26 receives less attention. Besides, only BREEAM has one sub-category considering *Economic* aspects. Therefore,
27 *New Construction* could be considered as a green rating system rather than a sustainable rating system.

28
29 Due to the need to address issues in local contexts of individual countries or regions, different rating systems
30 have a different emphasis. The categories of LEED and Green Star NZ are fundamentally similar with
31 BREEAM while CASBEE could be seen as an independent scheme in which their categories and sub-categories
32 are set up based on Japan's distinctive identity even though LEED, CASBEE, and Green Star NZ are all
33 influenced by BREEAM. However, *Indoor Environment Quality/Health & Wellbeing*, *Energy*, and *Material* are
34 the core categories in *New Construction* manuals in any ratings, accounting for major points, mandatory credits,
35 weightings, and sub-categories. In other words, *Indoor Environment Quality/Health & Wellbeing*, *Energy*, and
36 *Material* are widely concerned and international promoted. These are followed by *Transport*, *Land Use* and
37 *Ecology*.

38
39 Results in *Neighbourhood Development/Communities/Urban Development* indicate that although these tools
40 have developed significantly, their sub-categories have failed to address all aspects of *Economy* and *Institutional*
41 sustainability. While *Environment* and *Social* are placed great importance, only few sub-categories are
42 established to measure the *Economy* of a project and solely BREEAM takes *Institutional* dimension into
43 account. Despite dramatic evolving, *Neighbourhood Development/Communities/Urban Development* could only
44 assess two over four dimensions of sustainability. This could be explained that *Environmental* and *Social*
45 dimensions were critically analysed leading to the details of their factors in which these could be measured and
46 evaluated. While it is still struggling with precisely defining *Economic* and *Institutional* pillars to have their
47 factors fully assessed.

48
49 Greenwashing could be an issue when gaining enough points for certification without addressing pertinent
50 issues related to the sustainability is the main focus of building owners [131, 132]. To prevent greenwashing
51 action, mandatory credits have been introduced. Except for CASBEE which does not use mandatory credits,
52 BREEAM, LEED, and Green Star NZ have seen an increase in the total of those credits. However, LEED is the
53 only rating system which does not have reward points for mandatory credits. LEED should be considered as a
54 reference for the other rating schemes to follow in mandatory credits. This is because it emphasizes the role of
55 these credits are not negotiable and have to be satisfied even though achieving these credits could not positively
56 affect the final result.

57
58 After reviewing these four rating systems, their strengths and weaknesses are summarized in Table 6. It is clear
59 that each rating system has its own strengths and weaknesses. LEED is popular with the global adoption while
60 CASBEE is well-known with its balanced tools. It could be seen that BREEAM is currently leading in

sustainable assessment when it could assess more aspects in both *New Construction* and *Communities*. Otherwise, Green Star NZ should make more considerable efforts to have its tools more comprehensive in the sustainable assessment. The process of attaining green certifications or implementing environmental activities are considered as time-consuming and high spending [133-138]. Therefore, entirely transparent processes with detailed guidance in manuals along with case studies confirming that green certified buildings are much less costly in the long term than non-certified ones should be provided.

Table 6. Strengths and Weaknesses of rating systems (adapted from manuals in Table 3)

	BREEAM	LEED	CASBEE	Green Star NZ
Establishment	Only non-profit third party	Only non-profit third party	Corporations of government, industry, and academia.	Only non-profit third party
Market Penetration	Popular use in the European market	Global adoption	Only in Japan (published a pilot version for international use)	Only in NZ
Building's lifecycle assessment	Design, Built, Operation and Refurbishment	Design, Built, Operation and Refurbishment	Design, Built, Operation and Refurbishment	Design, Built, and Refurbishment
Large-scale projects manual	Communities manual	Neighbourhood Development manual	Urban Development manual, and City manual	None
Attraction	Global researchers and organizations	Global researchers and organizations	Limit	None
Results calculation	Moderation	Transparency	Complex	Moderation
Mandatory credits	Use	Use	None	Limit
New Construction manual	Environment	Sufficient assessment	Sufficient assessment	Sufficient assessment
	Society	Limited assessment	Limited assessment	Limited assessment
	Economy	Limited assessment	None	None
	Institution	None	None	None
Communities/ Neighbourhood Development/ Urban Development	Environment	Sufficient assessment	Sufficient assessment	None
	Society	Sufficient assessment	Sufficient assessment	None
	Economy	Limited assessment	Limited assessment	Sufficient assessment
	Institution	Limited assessment	None	None

7. CONCLUSION

All of the building rating systems have evolved over the years and have been updated to become more demanding in line with technological advances. This paper aims to develop a systematic review of the development of green rating systems focusing on four well-known rating systems, namely BREEAM, LEED, CASBEE, and Green Star NZ to 1) discover how interest and research in green rating systems have developed; 2) identify the similarity, difference, strength and weakness of green rating systems; 3) examine whether they fully assess the projects in all aspects of sustainability.

The results indicate that green rating systems have become the focus point of various researchers recently. Since 1998, 408 papers mentioned BREEAM, LEED, or CASBEE in E&B, B&E, A&C, BR&I, SBT&UD, CP, EIAR, R&SER while 202 of these papers focused on these ratings with a more in-depth approach. During the research period of 1998-2016, the number of green rating related papers rises sharply from only 2 to 36 on an annual basis. BREEAM is the first released green rating system in the world which certified approximately 560,000 buildings, but LEED is seen as the most flexible tool used in 160 countries and territories. In addition, there are a significantly higher number of papers discussing LEED compared to BREEAM concerning the eight main journal sources for this research since 1998. While the CASBEE and Green Star NZ related research papers are still limited. Green or sustainable building assessment is a global concern in both developed and developing countries. USA, Canada, the UK, China, and Australia have contributed up to approximately 70% of the total

1 papers while Turkey, India, Brazil, and Malaysia are prominently considering green rating systems in their
2 research schemes.

3
4 The similarity, difference, strength, and weakness of green rating systems were also identified based on the
5 research manuals. The total categories, sub-categories, points, and mandatory credits tend to increase and more
6 comprehensive in order to completely assess the sustainability of a project. LEED is the particular scheme in
7 which the total points and mandatory credits were double in the version 4 since the version 2 besides the
8 addition of two more categories. BREEAM is considered as the strongest rating system in which *Environment*
9 and *Society* are carefully assessed along with the consideration in *Economy* and *Institution*. The weakest system
10 could be Green Star NZ when it could only focus on one pillar of the sustainability, *Environment*. While *Society*
11 is critically evaluated by LEED; and CASBEE is a well-balanced tool in *Environment*, *Society*, and *Economy*
12 assessment. However, no rating scheme could assess a project in all aspects of sustainability.

13
14 This paper could be valuable for both green practitioners and researchers to have an overall understanding of
15 BREEAM, LEED, CASBEE and Green Star NZ. Categories, points, and mandatory credits were discussed in
16 details to pinpoint the current status/tendency of the green building rating systems. In addition, strengths and
17 weaknesses of each rating system were also analysed. Besides, the difference between *New Construction* and
18 *Neighbourhood Development/ Communities/Urban Development* were also examined to identify which
19 sustainable pillars could be assessed by these tools.

20
21 It is recommended to include *Economic* and *Institutional* factors as supplementary assessment criteria and
22 manuals for green building rating systems for a more comprehensive and through review of the project. Further
23 research is needed to validate the impacts of adding *Economic* and *Institutional* factors to current green building
24 certification systems.

25
26 To provide a better background knowledge of green rating systems, *Interior Design*, *Building Operation* and
27 other manuals should be examined, but this research was only considered two main manuals, *New Construction*
28 and *Neighbourhood Development* manuals. In addition, only recently CASBEE's manuals were analysed
29 because the previous ones are not in English. Furthermore, the examination in the four selected rating schemes
30 may not reflect the overall trend of hundreds of schemes worldwide. These could be the limitations of this
31 research.

32 33 **ACKNOWLEDGEMENT**

34 This paper is a significant upgrade to the paper "Green Building Assessment Schemes: A critical comparison
35 among BREEAM, LEED, and Green Star NZ" presented at the International Conference on Sustainable
36 Building Asia in South Korea on 11-14 December 2016.

37
38 This research has been supported with Vice Chancellor Doctoral Scholarship by Auckland University of
39 Technology, New Zealand.

40 41 **References**

- 42
43 [1] Tam C, Tam VW, Tsui W. Green construction assessment for environmental management in the
44 construction industry of Hong Kong. *International Journal of Project Management*. 2004;22:563-71.
45 [2] Abdul Rahman I, Memon AH, Karim A, Tarmizi A. Significant factors causing cost overruns in large
46 construction projects in Malaysia. *Journal of Applied Science*. 2013;13:286-93.
47 [3] Kucukvar M, Tatari O. Towards a triple bottom-line sustainability assessment of the US construction
48 industry. *The International Journal of Life Cycle Assessment*. 2013;18:958-72.
49 [4] Chowdhury M, Upadhyay A, Briggs A, Belal M. An empirical analysis of green supply chain management
50 practices in Bangladesh construction industry. 2016.
51 [5] Alwan Z, Jones P, Holgate P. Strategic sustainable development in the UK construction industry, through the
52 framework for strategic sustainable development, using Building Information Modelling. *Journal of Cleaner*
53 *Production*. 2017;140, Part 1:349-58.
54 [6] Osei V. The construction industry and its linkages to the Ghanaian economy-polices to improve the sector's
55 performance. *International Journal of Development and Economic Sustainability*. 2013;1:56-72.
56 [7] Wong JK-W, Kuan K-L. Implementing 'BEAM Plus' for BIM-based sustainability analysis. *Automation in*
57 *Construction*. 2014;44:163-75.
58 [8] Stadel A, Eboli J, Ryberg A, Mitchell J, Spatari S. Intelligent sustainable design: integration of carbon
59 accounting and Building Information Modeling. *Journal of Professional issues in engineering education and*
60 *practice*. 2011;137:51-4.

- 1 [9] Wong JK, Li H, Wang H, Huang T, Luo E, Li V. Toward low-carbon construction processes: the
2 visualisation of predicted emission via virtual prototyping technology. *Automation in Construction*. 2013;33:72-
3 8.
- 4 [10] Wong JKW, Zhou J. Enhancing environmental sustainability over building life cycles through green BIM:
5 A review. *Automation in Construction*. 2015;57:156-65.
- 6 [11] Wang N. The role of the construction industry in China's sustainable urban development. *Habitat*
7 *International*. 2014;44:442-50.
- 8 [12] Srinivasan RS, Ingwersen W, Trucco C, Ries R, Campbell D. Comparison of energy-based indicators used
9 in life cycle assessment tools for buildings. *Building and Environment*. 2014;79:138-51.
- 10 [13] Invidiata A, Ghisi E. Life-cycle energy and cost analyses of window shading used to improve the thermal
11 performance of houses. *Journal of Cleaner Production*. 2016;133:1371-83.
- 12 [14] Bansal S, Singh S. A sustainable approach towards the construction and demolition waste. *International*
13 *Journal of Innovative Research in Science, Engineering and Technology*. 2014;3:1262-9.
- 14 [15] Rode P, Burdett R, Soares Gonçalves JC. *Buildings: investing in energy and resource efficiency*. 2011.
- 15 [16] Yeheyis M, Hewage K, Alam MS, Eskicioglu C, Sadiq R. An overview of construction and demolition
16 waste management in Canada: a lifecycle analysis approach to sustainability. *Clean Technologies and*
17 *Environmental Policy*. 2013;15:81-91.
- 18 [17] Dixit MK, Culp CH, Fernández-Solís JL. System boundary for embodied energy in buildings: A conceptual
19 model for definition. *Renewable and Sustainable Energy Reviews*. 2013;21:153-64.
- 20 [18] Udawatta N, Zuo J, Chiveralls K, Zillante G. Attitudinal and behavioural approaches to improving waste
21 management on construction projects in Australia: benefits and limitations. *International Journal of Construction*
22 *Management*. 2015;15:137-47.
- 23 [19] Taylor BM. Sustainability and performance measurement: corporate real estate perspectives. *Performance*
24 *Improvement*. 2013;52:36-45.
- 25 [20] Yilmaz M, Bakış A. Sustainability in construction sector. *Procedia-Social and Behavioral Sciences*.
26 2015;195:2253-62.
- 27 [21] Miller D, Doh J-H, Panuwatwanich K, van Oers N. The contribution of structural design to green building
28 rating systems: An industry perspective and comparison of life cycle energy considerations. *Sustainable Cities*
29 *and Society*. 2015;16:39-48.
- 30 [22] Baek C, Park S-H, Suzuki M, Lee S-H. Life cycle carbon dioxide assessment tool for buildings in the
31 schematic design phase. *Energy and Buildings*. 2013;61:275-87.
- 32 [23] Dixit MK, Fernández-Solís JL, Lavy S, Culp CH. Need for an embodied energy measurement protocol for
33 buildings: A review paper. *Renewable and Sustainable Energy Reviews*. 2012;16:3730-43.
- 34 [24] Stephan A, Crawford RH, De Myttenaere K. Towards a more holistic approach to reducing the energy
35 demand of dwellings. *Procedia engineering*. 2011;21:1033-41.
- 36 [25] Blankendaal T, Schuur P, Voordijk H. Reducing the environmental impact of concrete and asphalt: a
37 scenario approach. *Journal of cleaner production*. 2014;66:27-36.
- 38 [26] Lorenzen JA. *Going Green: The process of lifestyle change 1*. *Sociological Forum: Wiley Online Library*;
39 2012. p. 94-116.
- 40 [27] Azhar S, Carlton WA, Olsen D, Ahmad I. Building Information Modeling for sustainable design and
41 LEED® rating analysis. *Automation in construction*. 2011;20:217-24.
- 42 [28] Biswas T, Tsung-Hsien Wang, Krishnamurti R. Integrating sustainable building rating systems with
43 building information models. 2008.
- 44 [29] Jalaei F, Jrade A. Integrating Building Information Modeling (BIM) and LEED system at the conceptual
45 design stage of sustainable buildings. *Sustainable Cities and Society*. 2015;18:95-107.
- 46 [30] Yu S-M, Tu Y. Are green buildings worth more because they cost more. *NUS Institute of Real Estate*
47 *Studies working paper (IRES2011-023)*. 2011.
- 48 [31] Vierra S. *Green Building Standards and Certification Systems*. Washington DC: Steven Winter Associates,
49 Inc. 2011.
- 50 [32] Alyami SH, Rezgui Y. Sustainable building assessment tool development approach. *Sustainable Cities and*
51 *Society*. 2012;5:52-62.
- 52 [33] Lee W. A comprehensive review of metrics of building environmental assessment schemes. *Energy and*
53 *Buildings*. 2013;62:403-13.
- 54 [34] Mitchell LM. Green Star and NABERS: learning from the Australian experience with green building rating
55 tools. *ENERGY EFFICIENT*. 2010:93.
- 56 [35] Vimpari J, Junnila S. Value influencing mechanism of green certificates in the discounted cash flow
57 valuation. *International Journal of Strategic Property Management*. 2014;18:238-52.
- 58 [36] Shiers DE. "Green" developments: environmentally responsible buildings in the UK commercial property
59 sector. *Property Management*. 2000;18:352-65.

- 1 [37] Turner C, Frankel M. Energy performance of LEED for new construction buildings. *New Buildings*
2 Institute. 2008;4:1-42.
- 3 [38] Newsham GR, Mancini S, Birt BJ. Do LEED-certified buildings save energy? Yes, but.... *Energy and*
4 *Buildings*. 2009;41:897-905.
- 5 [39] Scofield JH. Efficacy of LEED-certification in reducing energy consumption and greenhouse gas emission
6 for large New York City office buildings. *Energy and Buildings*. 2013;67:517-24.
- 7 [40] Runde T, Thoyre S. Integrating sustainability and green building into the appraisal process. *Journal of*
8 *Sustainable Real Estate*. 2010;2:221-48.
- 9 [41] Berardi U. Clarifying the new interpretations of the concept of sustainable building. *Sustainable Cities and*
10 *Society*. 2013;8:72-8.
- 11 [42] LEED. (2017). LEED Homepage. Retrieved 10 February 2017 <<http://www.usgbc.org/leed>>
- 12 [43] BREEAM. (2017). BREEAM Homepage. Retrieved 10 February 2017 <<http://www.breeam.com/>>
- 13 [44] Australia GS. (2017). Green Star Australia Homepage. Retrieved 10 February 2017
14 <http://new.gbca.org.au/green-star/>
- 15 [45] NZ GS. (2017). Green Star NZ Homepage. Retrieved 10 February 2017
16 <https://www.nzgbc.org.nz/Category?Action=View&Category_id=217>
- 17 [46] ISO. (2002). ISO/TC 59/SC 17. Retrieved 01 May 2017 <<https://www.iso.org/committee/322621.html>>
- 18 [47] Todd JA, Pyke C, Tufts R. Implications of trends in LEED usage: rating system design and market
19 transformation. *Building Research & Information*. 2013;41:384-400.
- 20 [48] Murakami S, Kawakubo S, Asami Y, Ikaga T, Yamaguchi N, Kaburagi S. Development of a
21 comprehensive city assessment tool: CASBEE-City. *Building Research & Information*. 2011;39:195-210.
- 22 [49] Cheng JC, Ma LJ. A data-driven study of important climate factors on the achievement of LEED-EB
23 credits. *Building and Environment*. 2015;90:232-44.
- 24 [50] Lee W, Burnett J. Benchmarking energy use assessment of HK-BEAM, BREEAM and LEED. *Building*
25 *and Environment*. 2008;43:1882-91.
- 26 [51] Schwartz Y, Raslan R. Variations in results of building energy simulation tools, and their impact on
27 BREEAM and LEED ratings: A case study. *Energy and Buildings*. 2013;62:350-9.
- 28 [52] Ng ST, Chen Y, Wong JM. Variability of building environmental assessment tools on evaluating carbon
29 emissions. *Environmental impact assessment review*. 2013;38:131-41.
- 30 [53] Häkkinen T. Sustainability and performance assessment and benchmarking of buildings-Final report.
31 Espoo: VTT. 2012.
- 32 [54] Collins D, Junghans A, Haugen T. Green leasing in theory and practice: A study focusing on the drivers
33 and barriers for owners and tenants of commercial offices. *Creating built environments of new opportunities*.
34 2016;1:419.
- 35 [55] Ciampa C, Hartenberger U. Going for green. German: Professional Group Sustainability RICS
36 Deutschland; 2012.
- 37 [56] Soulti E, Leonard D. The value of BREEAM: A review of latest thinking in the commercial building sector.
38 Watford, United Kingdom: Building Research Establishment Ltd. ; 2016.
- 39 [57] Yanarella EJ, Levine RS, Lancaster RW. Research and solutions:" Green" vs. Sustainability: From
40 semantics to enlightenment. *Sustainability: The Journal of Record*. 2009;2:296-302.
- 41 [58] Cole RJ. Shared markets: coexisting building environmental assessment methods. *Building Research &*
42 *Information*. 2006;34:357-71.
- 43 [59] Cole RJ. Environmental performance of buildings: Setting goals, offering guidance, and assessing progress.
44 *Reshaping the Built Environment: Ecology, Ethics, and Economics*. 1999:276.
- 45 [60] Shari Z, Soebarto V. Green vs. Sustainability performance assessment: a case study of an office building in
46 Putrajaya, Malaysia. 28th PLEA Conference: Opportunities, Limits and Needs - Towards an Environmentally
47 Responsible Architecture. Lima, Peru 2012.
- 48 [61] Kua H, Lee S. Demonstration intelligent building—a methodology for the promotion of total sustainability
49 in the built environment. *Building and Environment*. 2002;37:231-40.
- 50 [62] Yoshida J, Sugiura A. Which “greenness” is valued? Evidence from green condominiums in Tokyo. 2010.
- 51 [63] Hoffman AJ, Henn R. Overcoming the social and psychological barriers to green building. *Organization &*
52 *Environment*. 2008;21:390-419.
- 53 [64] Howe JC. Overview of green buildings. *National Wetlands Newsletter*. 2010;33:3-14.
- 54 [65] Li Y, Yu W, Li B, Yao R. A multidimensional model for green building assessment: A case study of a
55 highest-rated project in Chongqing. *Energy and Buildings*. 2016;125:231-43.
- 56 [66] Haapio A, Viitaniemi P. A critical review of building environmental assessment tools. *Environmental*
57 *Impact Assessment Review*. 2008;28:469-82.
- 58 [67] Kibert CJ. *Sustainable construction: green building design and delivery*: John Wiley & Sons; 2016.
- 59 [68] Buter R, Van Raan A. Identification and analysis of the highly cited knowledge base of sustainability
60 science. *Sustainability science*. 2013;8:253-67.

- 1 [69] Komeily A, Srinivasan RS. A need for balanced approach to neighborhood sustainability assessments: A
2 critical review and analysis. *Sustainable Cities and Society*. 2015;18:32-43.
- 3 [70] WCED. *Our common future*. New York: Oxford University Press; 1987.
- 4 [71] Lorenz D, Lützkendorf T. Sustainability in property valuation: Theory and practice. *Journal of Property*
5 *Investment & Finance*. 2008;26:482-521.
- 6 [72] Berkes F, Folke C, Colding J. *Linking social and ecological systems: management practices and social*
7 *mechanisms for building resilience*: Cambridge University Press; 2000.
- 8 [73] Epstein MJ, Buhovac AR. *Making sustainability work: Best practices in managing and measuring corporate*
9 *social, environmental, and economic impacts*: Berrett-Koehler Publishers; 2014.
- 10 [74] Pope J, Annandale D, Morrison-Saunders A. Conceptualising sustainability assessment. *Environmental*
11 *impact assessment review*. 2004;24:595-616.
- 12 [75] Littig B, Grießler E. Social sustainability: a catchword between political pragmatism and social theory.
13 *International journal of sustainable development*. 2005;8:65-79.
- 14 [76] Lebel L, Tri NH, Saengnoee A, Pasong S, Buatama U, Thoa LK. Industrial transformation and shrimp
15 aquaculture in Thailand and Vietnam: pathways to ecological, social, and economic sustainability? *AMBIO: A*
16 *Journal of the Human Environment*. 2002;31:311-23.
- 17 [77] Boyko CT, Cooper R, Davey CL, Wootton AB. Addressing sustainability early in the urban design process.
18 *Management of Environmental Quality: An International Journal*. 2006;17:689-706.
- 19 [78] Sharifi A, Murayama A. Neighborhood sustainability assessment in action: Cross-evaluation of three
20 assessment systems and their cases from the US, the UK, and Japan. *Building and Environment*. 2014;72:243-
21 58.
- 22 [79] Hunt DV, Lombardi DR, Rogers CD, Jefferson I. Application of sustainability indicators in decision-
23 making processes for urban regeneration projects. *Proceedings of the Institution of Civil Engineers -*
24 *Engineering Sustainability*. 2008;161:77-91.
- 25 [80] Valentin A, Spangenberg JH. A guide to community sustainability indicators. *Environmental Impact*
26 *Assessment Review*. 2000;20:381-92.
- 27 [81] Ameen RFM, Mourshed M, Li H. A critical review of environmental assessment tools for sustainable urban
28 design. *Environmental Impact Assessment Review*. 2015;55:110-25.
- 29 [82] Spangenberg JH. Institutional sustainability indicators: An analysis of the institutions in Agenda 21 and a
30 draft set of indicators for monitoring their effectivity. *Sustainable Development*. 2002;10:103-15.
- 31 [83] Spangenberg JH. Environmental space and the prism of sustainability: frameworks for indicators measuring
32 sustainable development. *Ecological indicators*. 2002;2:295-309.
- 33 [84] Bond A, Morrison-Saunders A, Pope J. Sustainability assessment: the state of the art. *Impact Assessment*
34 *and Project Appraisal*. 2012;30:53-62.
- 35 [85] Bourdeau L, Huovila P, Lanting R, Gilham A. *Sustainable development and the future of construction: A*
36 *comparison of visions from various countries*1998.
- 37 [86] Wangel J, Wallhagen M, Malmqvist T, Finnveden G. Certification systems for sustainable neighbourhoods:
38 What do they really certify? *Environmental impact assessment review*. 2016;56:200-13.
- 39 [87] Council ADUP. *The Pearl rating system for Estidama building rating system: design & construction*
40 *(Version 1.0)*. Abu Dhabi, UAE; 2010.
- 41 [88] Cities U, Governments L. *Culture: Fourth pillar of sustainable development*. United Cities and Local
42 *Governments (UCLG) Policy Statement*. 2010.
- 43 [89] Redclift M. The multiple dimensions of sustainable development. *Geography*. 1991:36-42.
- 44 [90] Chen X, Yang H, Lu L. A comprehensive review on passive design approaches in green building rating
45 tools. *Renewable and Sustainable Energy Reviews*. 2015;50:1425-36.
- 46 [91] Marjaba G, Chidiac S. Sustainability and resiliency metrics for buildings—Critical review. *Building and*
47 *Environment*. 2016;101:116-25.
- 48 [92] Poveda CA, Young R. Potential benefits of developing and implementing environmental and sustainability
49 rating systems: Making the case for the need of diversification. *International Journal of Sustainable Built*
50 *Environment*. 2015;4:1-11.
- 51 [93] Qin X, Mo Y, Jing L. Risk perceptions of the life-cycle of green buildings in China. *Journal of Cleaner*
52 *Production*. 2016;126:148-58.
- 53 [94] Ward C, Yates A, Brown V. *Assessing the performance of sustainable buildings in China: synergies*
54 *between BREEAM and the Chinese assessment standard for green building (Three Star)*. Watford, United
55 *Kingdom: Building Research Establishment Ltd.* ; 2017.
- 56 [95] Soulti E, Leonard D. *The value of BREEAM*. Watford, United Kindom: Building Research Establishment
57 *Ltd*; 2016.
- 58 [96] Mao X, Lu H, Li Q. A comparison study of mainstream sustainable/green building rating tools in the world.
59 *Management and Service Science (MASS'09): IEEE*; 2009. p. 1-5.

- 1 [97] Egbu C, Arif M, Syal M, Potbhare V, Syal M, Arif M, et al. Emergence of green building guidelines in
2 developed countries and their impact on India. *Journal of Engineering, Design and Technology*. 2009;7:99-121.
- 3 [98] Tinker A, Burt R. Greening the construction curriculum. *International Journal of Construction Education*
4 *and Research*. 2004;1:26-33.
- 5 [99] Lee YS, Kim S-K. Indoor environmental quality in LEED-certified buildings in the US. *Journal of Asian*
6 *Architecture and Building Engineering*. 2008;7:293-300.
- 7 [100] Ofori-Boadu A, Owusu-Manu D-G, Edwards D, Holt G. Exploration of management practices for LEED
8 projects: Lessons from successful green building contractors. *Structural Survey*. 2012;30:145-62.
- 9 [101] Trowbridge MJ, Worden K, Pyke C. Using green building as a model for making health promotion
10 standard in the built environment. *Health Affairs*. 2016;35:2062-7.
- 11 [102] Kokame K. More than just a glass face: What makes a "Green" or "Sustainable" building, exactly? 2017.
- 12 [103] Altomonte S, Schiavon S. Occupant satisfaction in LEED and non-LEED certified buildings. *Building and*
13 *Environment*. 2013;68:66-76.
- 14 [104] Cole RJ, Jose Valdebenito M. The importation of building environmental certification systems:
15 international usages of BREEAM and LEED. *Building Research & Information*. 2013;41:662-76.
- 16 [105] CASBEE. (2017). CASBEE Homepage. Retrieved 15 April 2017
17 <<http://www.ibec.or.jp/CASBEE/english/>>
- 18 [106] Haapio A. Towards sustainable urban communities. *Environmental Impact Assessment Review*.
19 2012;32:165-9.
- 20 [107] NZGBC. (2016). *Green Star Practitioner Course*. Auckland, New Zealand
- 21 [108] LEED. (2017). LEED Update. Retrieved 10 February 2017 <[http://www.usgbc.org/resources/leed-v4-](http://www.usgbc.org/resources/leed-v4-building-design-and-construction-current-version)
22 [building-design-and-construction-current-version](http://www.usgbc.org/resources/leed-v4-building-design-and-construction-current-version)>
- 23 [109] Han M, Chen G, Shao L, Li J, Alsaedi A, Ahmad B, et al. Embodied energy consumption of building
24 construction engineering: case study in E-town, Beijing. *Energy and Buildings*. 2013;64:62-72.
- 25 [110] EIA U. Energy information administration "international energy outlook". report DOE/EIA-0484; 2010.
- 26 [111] Abanda F, Byers L. An investigation of the impact of building orientation on energy consumption in a
27 domestic building using emerging BIM (Building Information Modelling). *Energy*. 2016;97:517-27.
- 28 [112] Aksoezen M, Daniel M, Hassler U, Kohler N. Building age as an indicator for energy consumption.
29 *Energy and Buildings*. 2015;87:74-86.
- 30 [113] Joseph P, Tretsiakova-McNally S. Sustainable non-metallic building materials. *Sustainability*.
31 2010;2:400-27.
- 32 [114] Attom M, Abed F, Elemam M, Nazal M, ElMessalami N. The effect of treated waste-water on compaction
33 and aompression of fine soil. *World Academy of Science, Engineering and Technology, International Journal of*
34 *Civil, Environmental, Structural, Construction and Architectural Engineering*. 2016;10:1088-92.
- 35 [115] Gupta A, Kumar A. Composites Materials: Addressing the Climate Change. *Asia Pacific Business*
36 *Review*. 2010;6:78-89.
- 37 [116] NZGBC. (2016). *Green Star Technical Manual v3.1*. Retrieved 27 April 2017
38 https://www.nzgbc.org.nz/Attachment?Action=Download&Attachment_id=694
- 39 [117] BREEAM. BREEAM International New Construction 2016. BRE Global Ltd; 2016.
- 40 [118] Schweber L. The effect of BREEAM on clients and construction professionals. *Building Research &*
41 *Information*. 2013;41:129-45.
- 42 [119] Hupp EB. Recent trend in green buildings laws: potential preemption of green building and whether
43 retrofitting existing buildings will reduce greenhouse gases and save the economy. *The Urban Lawyer*.
44 2009:489-99.
- 45 [120] Boemi S-N, Irulegi O, Santamouris M. Energy performance of buildings: energy efficiency and built
46 environment in temperate climates: Springer; 2015.
- 47 [121] Guz A, Rushchitsky J. Scopus: A system for the evaluation of scientific journals. *International Applied*
48 *Mechanics*. 2009;45:351.
- 49 [122] Aghaei Chadegani A, Salehi H, Yunus MM, Farhadi H, Fooladi M, Farhadi M, et al. A comparison
50 between two main academic literature collections: Web of Science and Scopus databases. 2013.
- 51 [123] BREEAM. BREEAM Communities 2012. BRE Global Ltd; 2012.
- 52 [124] Darko A, Chan APC. Critical analysis of green building research trend in construction journals. *Habitat*
53 *International*. 2016;57:53-63.
- 54 [125] Little SG. Graduate education of the top contributors to the school psychology literature: 1987-1995.
55 *School Psychology International*. 1997;18:15-27.
- 56 [126] Yuan H, Shen L. Trend of the research on construction and demolition waste management. *Waste*
57 *Management*. 2011;31:670-9.
- 58 [127] Gibson D. Awash in green: a critical perspective on environmental advertising. *Tul Eenvt LJ*.
59 2008;22:423.

- 1 [128] Eichholtz P, Kok N, Quigley JM. The economics of green building. *Review of Economics and Statistics*.
2 2013;95:50-63.
- 3 [129] Heeg S, Bitterer N. Communities of practice and transnational standards: changing building practices in
4 Warsaw's commercial property sector. *Global Networks*. 2015;15:343-59.
- 5 [130] Seintou A. A comparison of LEED and BREEAM green building assessment tools and their relevance for
6 Greece. 2015.
- 7 [131] Fenner RA, Ryce T. A comparative analysis of two building rating systems. Part 1: Evaluation.
8 *Engineering Sustainability*. 2008;161:55.
- 9 [132] YJ Siew R, CA Balatbat M, G. Carmichael D. A review of building/infrastructure sustainability reporting
10 tools (SRTs). *Smart and Sustainable Built Environment*. 2013;2:106-39.
- 11 [133] Crawley D, Aho I. Building environmental assessment methods: applications and development trends.
12 *Building Research & Information*. 1999;27:300-8.
- 13 [134] Lowton R. *Construction and the natural environment*: Butterworth-Heinemann Oxford; 1997.
- 14 [135] Ding GK. Sustainable construction—The role of environmental assessment tools. *Journal of*
15 *environmental management*. 2008;86:451-64.
- 16 [136] Liyin S, Hong Y, Griffith A. Improving environmental performance by means of empowerment of
17 contractors. *Management of environmental quality: an international journal*. 2006;17:242-57.
- 18 [137] Wiley JA, Benefield JD, Johnson KH. Green design and the market for commercial office space. *The*
19 *Journal of Real Estate Finance and Economics*. 2010;41:228-43.
- 20 [138] Tucker S, Ambrose M, Johnston D, Newton P, Seo S, Jones D. *LCADesign: An integrated approach to*
21 *automatic eco-efficiency assessment of commercial buildings*. 2003.

22

23