

Applications of Particle Swarm Optimization in Geotechnical Engineering: A Comprehensive Review

M. Hajihassani¹, D. Jahed Armaghani^{2*}, R. Kalatehjari³

Abstract

Particle swarm optimization (PSO) is an evolutionary computation approach to solve nonlinear global optimization problems. The PSO idea was made based on simulation of a simplified social system, the graceful but unpredictable choreography of birds flock. This system is initialized with a population of random solutions that are updated during iterations. Over the last few years, PSO has been extensively applied in various geotechnical engineering aspects such as slope stability analysis, pile and foundation engineering, rock and soil mechanics, and tunneling and underground space design. A review on the literature shows that PSO has utilized more widely in geotechnical engineering compared with other civil engineering disciplines. This is due to comprehensive uncertainty and complexity of problems in geotechnical engineering which can be solved by using the PSO abilities in solving the complex and multi-dimensional problems. This paper is aimed to review the applications of PSO in geotechnical engineering to provide insights into the PSO mechanism for civil engineers.

Keywords: Particle swarm optimization, Civil Engineering, Geotechnical Engineering.

¹ Department of Geotechnics and Transportation, Faculty of Civil Engineering, Universiti Teknologi Malaysia, 81310 UTM Skudai, Johor, Malaysia. Email: mohsen_hajihassani@yahoo.com.

^{2*} Department of Civil and Environmental Engineering, Amirkabir University of Technology, 15914, Tehran, Iran. Email: danielarmaghani@gmail.com. Tel.: +98 911 1574644 (**Corresponding Author**).

³ Built Environment Engineering Department, Auckland University of Technology, Auckland, New Zealand, r.kalatehjari@aut.ac.nz

1. Introduction

Swarm intelligence (SI) is the collective behaviour of decentralized systems composed of many individuals that coordinate their activities using self-organization (Cui and Gao, 2012). SI systems are inspired from biological systems which are usually consisted of a population of simple agents interacting locally with one another and globally with their environment. The ant colonies (Dréo and Siarry, 2002; Dorigo and Blum, 2005), bird flocking (Antoniou *et al.*, 2009; Antoniou *et al.*, 2013), bee colonies (Karaboga and Basturk, 2007; Karaboga and Basturk, 2008) and fish schooling (Li and Qian, 2003; Neshat *et al.*, 2013) are some example of natural SI systems. Based on these systems, several optimization algorithms such as ant colony, artificial bee colony, and PSO have been developed. PSO is a powerful population-based computational method that is able to solve a problem by using a population of candidate solutions. To improve a candidate solution, PSO iteratively relocates the candidates in a search space by employing simple mathematical equations. Compared to other optimization algorithms, PSO has many advantages such as easy realized, fast convergent, promising performance on nonlinear function optimization (Chen *et al.*, 2011).

Ever since the PSO algorithm has been introduced by Kennedy and Eberhart (Kennedy and Eberhart, 1995; Eberhart and Kennedy, 1995), it has successfully applied in various fields of civil engineering. This popularity is due to the comprehensible performance of PSO as well as simplicity of its operation. Many scholars applied PSO to solve their problems in the fields of structural (Gholizadeh and Salajegheh 2009; Poitras *et al.*, 2011; Mashhadban *et al.*, 2016), environmental (Wan, 2013; Hajihassani *et al.*, 2015; Najafzadeh and Tafarjnoruz, 2016), hydrological (Kuok *et al.*, 2010) and geotechnical (Sadoghi Yazdi *et al.*, 2011; Kalatehjari *et al.*, 2014; Jahed Armaghani *et al.*, 2014) engineering. The literature reveals that PSO has been applied frequently in geotechnical engineering, in comparison to the other fields of civil engineering. This is mainly because of the uncertain behavior of rock and soil as the main materials in geotechnical engineering, in contrast with the other civil engineering materials such as concrete and steel. As a powerful optimization technique, PSO has been extensively applied in different geotechnical engineering aspects such as slope stability analysis, pile and foundation engineering, rock and soil mechanics, and tunneling and underground space design.

1
2
3
4
5
6
7
8
9
10
11
12
13
14
15
16
17
18
19
20
21
22
23
24
25
26
27
28
29
30
31
32
33
34
35
36
37
38
39
40
41
42
43
44
45
46
47
48
49
50
51
52
53
54
55
56
57
58
59
60
61
62
63
64
65

In addition to the aforementioned applications, PSO is also used as a learning algorithm in artificial neural networks (ANNs) that are widely used in geotechnical engineering (Jahed Armaghani *et al.*, 2014, Hajihassani *et al.*, 2014). Backpropagation (BP) is the most well-known learning algorithm which is frequently used as the training algorithm in ANNs. However, BP is a local search learning algorithm and therefore the optimum search process of ANNs might fail and return unsatisfied solution (Liou *et al.*, 2009). On the other hand, PSO as a robust global search algorithm, is a suitable alternative to modify weight and bias of ANNs for getting higher performance prediction. Hence, a combination PSO-ANN algorithm receives advantages of both PSO and ANN to solve/optimize the problems in which PSO searches for global minimum and ANN uses the global minimum to find the best result.

Despite the superiorities of PSO in solving the complex problems, it is occasionally faced with some limitations such as premature and divergence phenomena (Neshat, 2013). Consequently, some modifications have been suggested to avoid these limitations and enhance the PSO capabilities (e.g. introducing inertia weight (Shi and Eberhart, 1998), constriction factor (Eberhart and Shi, 2000), crossover operation (Lovbjerg *et al.*, 2001), self-adaptation (Lü *et al.*, 2006; Zhang *et al.*, 2013), and logistic dynamic weight (Ni and Deng, 2013)). The modified PSO techniques were reported to perform with reasonable convergence capability.

2. Overview of Particle Swarm Optimization

Kennedy and Eberhart (1995) developed PSO as a stimulation of birds swarm. Swarm is a group of individuals with defined rules for individual behaviors and communications. The ability of each individual to deal with the previous experiences of the swarm is called swarm intelligence. This capability guides the swarm toward its optimum goal. PSO is a population-based search technique where a population of particles starts their journey in a space with respect to the current best position (Hossain and El-Shafie, 2014). Reynolds (1987) described three simple rules for the behavior of individuals inside a swarm which were used as one of the basic concepts of PSO by Kennedy and

1
2 Eberhart (1995). Although these simple rules model the behavior of individuals, their combination
3 produces a complicated behavior for the swarm:

- 4 i. Individuals avoid collision with others
- 5
- 6
- 7 ii. Individuals go toward the goal of swarm
- 8
- 9
- 10 iii. Individuals go to the center of swarm
- 11
- 12
- 13
- 14
- 15

16 The process of decision making related to individuals is other basic concept of PSO. Each individual
17 of the swarm makes decision based on the following two factors:

- 18 i. the own experiences of individual that is its best results so far
- 19
- 20
- 21 ii. the experiences of other individuals in the swarm that is the best results in the whole
- 22
- 23
- 24
- 25
- 26
- 27
- 28
- 29
- 30
- 31
- 32
- 33
- 34
- 35
- 36
- 37
- 38
- 39
- 40
- 41
- 42
- 43
- 44
- 45
- 46
- 47
- 48
- 49
- 50
- 51
- 52
- 53
- 54
- 55
- 56
- 57
- 58
- 59
- 60
- 61
- 62
- 63
- 64
- 65

Fig. 1 illustrates the standard flowchart of PSO. At the starting step of the original PSO a certain number of individuals, called particles, are distributed in the search space by using a random pattern (Kennedy and Eberhart, 1995; Cheng *et al.*, 2007). Each particle is a representative of a feasible solution. Fig. 2 shows the schematic structure of a particle in PSO involving three divided parts as its current position, best position, and velocity. The current position, best position, and velocity of particles record respectively the current coordinates, best coordinates, and velocity vectors of a particle in D-dimensional space, where D starts from one (Kalatehjari, 2013). Consequently, for a particle in D-dimensional space, a 3D-dimensional particle is desirable.

The aim of PSO is to meet the termination criteria which are defined as the criteria for terminating the iterative search process. To select an appropriate termination criterion, it should be noted that the termination condition does not cause a prematurely converge and it should protect against oversampling of the fitness (Engelbrecht, 2007). The following termination criteria are frequently used in PSO:

- i. Termination when the maximum number of iterations is exceeded
- ii. Termination when an satisfactory solution is found based on the condition of each problem
- iii. Termination when no improvement is achieved over a certain number of iterations

These criteria are applied to ensure that PSO is able to converge on a feasible solution. In fact, PSO tries to make the objective function as minimum or maximum depend to the problem to be solved. To lead the swarm toward this aim, the fitness value of each particle is determined by evaluating its current position by the objective function. After evaluation the fitness of all particles, Eq. 1 (velocity equation) is used to calculate the velocity of particles based on their best position and the position of the best particle in the swarm. Using Eq. 2, particle positions can be updated according to their current positions and velocities. This iterative process continues until reaching the termination criteria. Eqs. 1 and 2 are as follow:

$$v_{n(i)} = v_{n(i-1)} + u(0, \vartheta_1)(bp_{n(i)} - x_{n(i)}) + u(0, \vartheta_2)(bg_{n(i)} - x_{n(i)}) \quad (1)$$

$$x_{n(i+1)} = x_{n(i)} + v_{n(i)} \quad (2)$$

where, $v_{n(i-1)}$ is the velocity of n^{th} particle in past iteration and $v_{n(i)}$ is the velocity of n^{th} particle in current iteration. The vectors of random numbers of n^{th} particle are presented by $u(0, \vartheta_1)$ and $u(0, \vartheta_2)$, $bp_{n(i)}$ is the best position of n^{th} particle so far, $bg_{n(i)}$ is the position of the best particle of the swarm so far, and $x_{n(i-1)}$ and $x_{n(i)}$ are the position of n^{th} particle respectively in the current and the next iterations.

Three components of velocity equation are respectively the initial, cognitive, and social parts. Two specifications of searching, explorations and exploitation, depend on the velocity of particles that is controlled by the values of ϑ_1 and ϑ_2 . Consequently, these values control the searching behaviour of PSO. It is usual to set $\vartheta_1 = \vartheta_2 = 2$ in early search. A greater value of ϑ_1 provides faster convergence, while increase in ϑ_2 helps to discover new solutions in the search space. Since the velocity of particles may increase surprisingly by changing the mentioned coefficients, a limiting bound of velocity as [-

v_{\max} , v_{\max}] was attached to the original PSO. The value of v_{\max} is called constriction coefficient. Poli et al. (2007) advised to select the constriction coefficient carefully, since it influenced the balance of exploration and exploitation. By introducing ω as the inertia weight of particles, the original formula of velocity was edited by Shi and Eberhart (1998) to minimize/reduce the role of constriction coefficient as presented in Eq. 3. However, Clerc and Kennedy (2002) showed that using the inertia weights of greater than one interrupts the converge process of PSO. They proposed Eq. 4 by introducing ξ as the constant multiplier in to prevent the explosion of the swarm, guaranteed the converge process, and almost eliminated the effects of constriction coefficient.

$$v_{n(i)} = \omega v_{n(i-1)} + u(0, \vartheta_1)(bp_{n(i)} - x_{n(i)}) + u(0, \vartheta_2)(bg_{n(i)} - x_{n(i)}) \quad (3)$$

$$v_{n(i)} = \xi [v_{n(i-1)} + u(0, \vartheta_1)(bp_{n(i)} - x_{n(i)}) + u(0, \vartheta_2)(bg_{n(i)} - x_{n(i)})] \quad (4)$$

$$\xi = \frac{2}{(\vartheta_1 + \vartheta_1) - 2 + \sqrt{(\vartheta_1 + \vartheta_1)^2 - 4(\vartheta_1 + \vartheta_1)}}, (\vartheta_1 + \vartheta_1) > 4 \quad (5)$$

In PSO, all members of the population stay alive and move along the process of optimization. Therefore, it can guarantee to save all feasible solutions (Kennedy and Eberhart, 1995). Moreover, PSO works with real variables, operates simple, and needs slight tune-up studies to make convergence and searching in balance (Clerc and Kennedy, 2002). These features have equipped PSO with simple implementation and fast convergence to the optimal solution which are the main reasons of its popularity (Windisch *et al.*, 2007).

With the aim of improving the PSO performance, many attempts have been made to incorporate obtained knowledge from other evolutionary computation approaches through adapting PSO parameters. By employing the Gaussian noise, Miranda and Fonseca (2002) proposed self-adapting PSO. In this technique, the variance of distributions is evolved using selection. Lovjberg et al. (2001) utilized a sort of breeding to recombine solutions. In their technique, by performing weighted averaged of PSO parameters, the position and velocity of the selected pairs of particles were recalculated. PSO and GA algorithms were combined by Robinson et al. (2002) through switching one of them to another one after several iterations. The best results were obtained by switching of the PSO to GA. Ciuprina et al. (2002) proposed intelligence PSO based on the combination of PSO with

1 Tabu search method. The successful performance was obtained for solving the difficult multimodal
2 problems.

3
4 PSO has been greatly effective to solve/approximate a huge range of problematic optimization
5 problems in the civil engineering arena such as construction litigation, design optimization of
6 water/wastewater distribution networks, traffic control, structural design, parameter calibration of
7 hydrological models, river stage prediction, transportation network design, geotechnical model
8 calibration, slope stability analysis, and pavement engineering. Consequently, the application of PSO
9 has increased surprisingly in recent years. Table 1 presents a comparison between PSO and three
10 other well-known metaheuristic methods.
11
12
13
14
15
16
17
18
19
20
21
22

23 **3. PSO Applications in Geotechnical Engineering**

24
25
26 Complexity of analysis of geotechnical behavior is due to multivariable dependencies of soil and rock
27 responses. Most of the materials that geotechnical engineers deals with show uncertain behavior in
28 consequence of the complex formation of these materials. Therefore, in some geotechnical
29 engineering problems, the objective function is non-convex and discontinuous. Consequently, simple
30 optimization techniques may have difficulties in finding the global optimum solution due to get
31 trapped in local solutions. To overcome this limitation, using a powerful optimization method to
32 obtain the global optimum solution is of interest. Accordingly, as a powerful optimization technique,
33 PSO has entered in the field of geotechnical engineering to solve its problems. In the following
34 sections, a review of the PSO applications in geotechnical engineering is presented.
35
36
37
38
39
40
41
42
43
44
45
46
47
48
49

50 **3.1. Slope Stability Analysis**

51
52 The application of PSO in slope stability analysis is mainly within the framework of limit equilibrium
53 method for soil slopes (Kalatehjari and Ali, 2013). This context involves two major steps as
54 calculating the factor of safety of possible slip surfaces and determining the critical slip surface with
55
56
57
58
59
60
61
62
63
64
65

1 the minimum factor of safety. PSO is mainly used to the second step, since the shape and location of
2 the critical slip surface is generally unknown in soil slopes (Bolton *et al.*, 2003).
3

4 PSO can be applied to two-dimensional (2D) or three-dimensional (3D) slope stability problems
5 (Kalatehjari, 2013). In 2D analyzes, a search engine can be applied to the problem to determine the
6 shape of the critical slip surface in a pre-defined section of the slope. The common shapes of the slip
7 surface in 2D analyzes are circular, ellipse, spiral, and polygonal or arbitrary (Chen *et al.*, 2006;
8 Kalatehjari *et al.*, 2014). In contrast, 3D analyzes assume space shapes of slip surfaces such as
9 spherical, ellipsoidal, and Non-Uniform Rational B-Splines (Li *et al.*, 2008; Kalatehjari *et al.*, 2012;
10 Taha *et al.*, 2012).
11
12
13
14
15
16
17
18
19
20

21 Fig. 3 shows the general flowchart of PSO to determine the critical slip surface in slope stability
22 analysis. The initial PSO parameters were set in order to start optimization procedure. After that, a
23 number of particles equal to swarm size are generated by using a random pattern over the search
24 space. The personal best particles for the first swarm are identical to particles themselves; because no
25 other swarm exists yet to make a comparison. The velocity of all particles at the starting point is set to
26 zero, because the particles are just created without any movement. After setting up the initial values,
27 the first particle is converted to a slip surface. If this slip surface has an acceptable intersection with
28 the slope, it is qualified. Otherwise, the slip surface is disqualified. A pre-defined value of fitness is
29 given to disqualify slip surfaces as the minimum fitness. This value is obtained by setting the
30 maximum allowed value of FOS. In parallel, the value of FOS together with the unique direction of
31 sliding are calculated for qualified slip surfaces. Then, the corresponding fitness values of particles
32 are calculated by fitness function of PSO. This process is repeated for all particles of the swarm
33 (Kalatehjari, 2013).
34
35
36
37
38
39
40
41
42
43
44
45
46
47
48
49

50 The global best particle is defined as the one with the greatest fitness value in a swarm. The current
51 position of particles that improved their fitness value is recorded as their new personal best positions,
52 while the previous best position is retained for other particles. Through an iterative process,
53 subsequent swarms are generated by updating the velocity and position of particles. The optimization
54
55
56
57
58
59
60
61
62
63
64
65

1 process is finished when the particles of a swarm satisfy the termination criteria. Eventually, the
2 position of the last global best particle represents the critical slip surface of the slope.
3

4 Kalatehjari *et al.* (2012 and 2014), Taha *et al.* (2012), and Wang *et al.* (2013) used PSO in 2D
5 analysis to determine the location of critical slip surface with circular shape. They proved the ability
6 of PSO in determining the critical slip surface by re analysing three numerical examples from the
7 literature and actual slope stability problem. Moreover, Zhou *et al.* (2012) proposed an arbitrary shape
8 of 2D slip surface defined by seven control points with arbitrary horizontal spacing to determine the
9 general shape and location of the critical slip surface. They benefited the global feature of PSO to
10 avoid local minima and verified their approach by evaluating two examples for simple slope and
11 complex slope.
12
13
14
15
16
17
18
19
20
21

22 Li *et al.* (2005) applied a modified PSO to determine the critical slip surface of slope. Their proposed
23 method, discontinuous flying PSO, was created by relating the position and velocity update of particle
24 to their fitness value. They found an average improvement of 6% and faster convergence in the results
25 of their method compared with the original PSO. Li *et al.* (2010) introduced a mutation PSO to solve
26 the search of critical slip surface in complex soil slopes. They concluded that their proposed method
27 can locate the true critical slip surface.
28
29
30
31
32
33
34
35
36

37 Chen *et al.* (2006) adopted PSO to determine the 2D non-circular critical slip surface of slope. They
38 listed the benefits of PSO as providing a good balance between global search and local refinement,
39 solving the local minima problem, great efficiency, and easily incorporating with both limit
40 equilibriums and finite element methods. Zhao *et al.* (2008) applied an updated PSO method to
41 determine the 2D non-circular critical slip surface of non-homogeneous slope. They found that faster
42 convergence rate and better precession are the superior abilities of PSO.
43
44
45
46
47
48
49
50

51 Kang *et al.* (2006) and Wen-Tao (2009) respectively developed the combined method of PSO by
52 adding support method machines and least square vector machines methods to evaluate the 2D
53 stability of rock slopes. They concluded that fast speed of problem solving, more accurately
54 estimation of slope stability, and global optimization are the advantages of this technique.
55
56
57
58
59
60
61
62
63
64
65

1
2
3
4
5
6
7
8
9
10
11
12
13
14
15
16
17
18
19
20
21
22
23
24
25
26
27
28
29
30
31
32
33
34
35
36
37
38
39
40
41
42
43
44
45
46
47
48
49
50
51
52
53
54
55
56
57
58
59
60
61
62
63
64
65

Li *et al.* (2008 and 2009), Wang *et al.* (2010), Li and Chu (2011), and Cheng *et al.* (2011) applied a coupled optimization method of PSO/harmony search to solve the nonlinear function of factor of safety in slope stability problem. The feasibility and applicability of this technique was supported by evaluating practical engineering problems and re-evaluating bench mark problems from literature. In addition, Khajehzadeh *et al.* (2010 and 2011) used a same combined optimization method of PSO/harmony search to analyse the reliability of earth slope in 2D. They obtained lower values of reliability and factor of safety in comparison with the standard PSO and other methods by employing their new method in previous studies. Xu *et al.* (2011) developed an optimization method based on the Projection Pursuit (PP), PSO, and the Logistic Curve Function (LCF) to evaluate the 2D problem of slope stability. PSO was used to optimize the PP function and the parameters of LCF. They verified the feasibility and affectivity of their proposed model in practice by evaluating a case study.

Li *et al.* (2012) proposed a modified PSO in cooperation with finite element limit equilibrium method (FELEM) to determine the location and shape of non-circular critical slip surface in 2D geotechnical problems. Based on the slope geometry and stress distribution, they established the stress compatibility constraints together with the geometrical and kinematical compatibility constraints. These extra features were used to guarantee the realistic shape of the critical slip surface. They went through several numerical examples to prove the affectivity and efficiency of their approach in routine geotechnical practices.

Although PSO has successfully contributed in determining the 2D critical slip surface, it is absent in 3D slope stability analysis. In fact, only a few researchers published their results in determining the critical slip surface in 3D slope stability problems and none of them applied PSO. Yamagami and Jiang (1997) applied Dynamic Programming with Random Number Generator, Jiang *et al.* (2003), Mowen (2004), and Mowen *et al.* (2011) used Monte Carlo method, Cheng *et al.* (2005) utilized Simulated Annealing, and Toufigh *et al.* (2006) applied Gradient methods to determine the critical slip surface in 3D slopes stability problems. The shortage of studies in this area is caused by the potential difficulties in performing a successful search within a complicated 3D slope stability problem. The problem of determining the 3D critical slip surface needs a fast and precise global

1 optimization technique to work integrated with the complicated 3D equations of FOS and slip surface
2 respectively as its objective function and particle generator (Kalatehjari, 2013). Based in the
3
4 successful performance of PSO in 2D slope stability analysis as well as other problems of
5
6 geotechnical engineering, it is believed that PSO can be a competent candidate in the study of 3D
7
8 critical slip surface.
9

10 11 12 13 14 **3.2. Pile and Foundation Design** 15

16
17 In General, the application of PSO in pile and foundation design is mainly in predicting the behavior
18
19 of axially loaded piles and ultimate bearing capacity of foundations. In addition, PSO has been used to
20
21 estimate the secant pile construction time.
22

23
24 A hybrid PSO-BP model was developed by Ismail and Jeng (2012) to predict the relationship of
25
26 load/settlement in a single pile. They considered pile settlement as a non-linear function of related
27
28 parameters as follow:
29

$$30
31 S = f(P, k_s, E_p, D, L) \quad (6)
32$$

33
34 in which, S , P , k_s , E_p , D and L are pile settlement, pile load, soil stiffness, pile modulus, pile diameter
35
36 and pile length, respectively. A database of 92 static pile loading tests on concrete piles was used to
37
38 conduct the modeling. The results of their study show high values of correlation coefficient between
39
40 predicted settlements obtained by PSO-ANN model and measured settlements obtained by static load
41
42 tests.
43
44

45
46 In the field of geotechnical engineering, construction time is a critical factor for control the cost and
47
48 planning in construction projects. Regarding this, Chen *et al.* (2009) compared the construction time
49
50 of a secant pile wall using two optimization methods including self-organizing map based
51
52 optimization (SOMO) and PSO. A database consists of 207 primary and secondary bored piles for a
53
54 secant pile wall was used in this study. The results of the study revealed that the total saved time for
55
56 the SOMO and PSO was 27.21 and 23.79 h respectively. They concluded that the SOMO method
57
58 yields better construction compared to the PSO method.
59
60
61

1
2
3
4
5
6
7
8
9
10
11
12
13
14
15
16
17
18
19
20
21
22
23
24
A research on the load-deformation behaviour of axially loaded piles was conducted by Ismail *et al.* (2013). They utilized a hybrid PSO-BP model for predicting behavior of single piles embedded in soil medium and subjected to an axial load. The data of full scale static load tests of 115 piles were considered to train and validate the network. Subsequently, the PSO-BP algorithm was used to solve the soil-structure interaction problem, including a difficult mechanism of load transfer from the pile to the supporting geologic medium. Pile load, soil stiffness, pile modulus, pile diameter, and pile length were used as inputs whereas pile load-deformation was considered as output. For evaluation purpose, they compared the results the proposed model with BP and PSO models as well as the PSO-BP model developed by Zhang *et al.* (2007). Finally, they found that the proposed PSO-BP hybrid technique simulates the load-deformation curve of axially loaded piles more accurately compared to other models.

25
26
27
28
29
30
31
32
33
34
35
36
37
38
39
40
41
42
43
44
Zhao and Yin (2010) utilized a Chaotic PSO (CPSO) and support vector machine (SVM) method for ultimate bearing capacity prediction of shallow foundation. CPSO is a more superior algorithm in comparison to simple PSO in terms of searching quality, efficiency and robustness on initial conditions. Fig. 4 shows the algorithm of CPSO-SVM proposed by Zhao and Yin (2010) to determine the ultimate bearing capacity of shallow foundations. They utilized footing width (B), footing depth (D), footing geometry (L/B), unit weight of sand (γ_d) and angle of shearing resistance (θ) as input parameters, whereas the ultimate bearing capacity (q_u) was used as the single output variable. The results revealed that the CPSO-SVM model predicts the ultimate bearing capacity of shallow foundation with high degree of accuracy.

45
46
47
48
49
50
51
52
53
54
55
56
57
58
59
60
61
62
63
64
65
Evaluation of pile capacity and control of pile driving are significant issues in pile installation process. In this way, Cheng *et al.* (2012) developed a modified model based on hybrid of harmony search (HS) and PSO for selection of parameters related to the maximum axial load. The purpose of selecting parameters was to minimize difference between the calculated axial load values obtained from formula and the measured axial load values obtained from the pile driving analyzer (PDA) tests. From the conclusion part of this study it can be found that the proposed coupling model is effective over a wide range of problems and also this model can be applied in different fields of engineering.

3.3. Rock Mechanics

The application of PSO in rock mechanics included but not limited to determining the roughness profiles of rocks, back analysis of geomechanical parameters, identifying the structure of rocks, and recognizing the structure of altered rocks.

A new method based on hybrid PSO algorithm and multi-layer perceptron (MLP) neural network was developed by Babanouri *et al.* (2013) to estimate fractal dimension of roughness profiles (D) and standard deviation (σ) of rock. It is worth noting that determination of D is still a problem in geotechnical engineering due to attributed different values of the fractal dimension. There are two kinds of errors for prediction of fractal dimension; stochastic and systematic. Modelling of these errors is difficult because of the complexity relationship between the fractal dimension and the measurable variables. A huge number of fractional Brownian including 39900 profiles was generated and their statistical features were extracted. They examined this model for 10 standard profiles of roughness and concluded that the proposed estimator gives an error 15 times smaller than the roughness-length method. The results show that the fractal dimension does not necessarily increase with increasing roughness.

Zhao and Yin (2009) proposed a new intelligent displacement back analysis method based on the combination of support vector machine, PSO, and numerical analysis. A non-linear relationship between displacement and geomechanical parameters of rock mass was described by SVM. They used PSO to increase the generalization performance of searching process in the SVM model. A series of numerical analyses (using FLAC2D) was conducted to produce the required datasets for training and testing steps. Fig. 5 shows the process of recognizing the rock mass parameters using the back analysis based on the proposed method. The results revealed that the proposed technique increases the efficiency and precision of back analysis of geomechanical parameters.

A hybrid genetic programming with modified PSO algorithm was proposed by Feng *et al.* (2006) to identify the structure of visco-elastic models of rocks. In this study, genetic programming was utilized to explore the structure of the model and the modified PSO was used to investigate coefficients in the

1 provisional model. They concluded that if the evolving factors and number of generation are
2 appropriately set, the fitness method can be found with a global optimum solution.
3

4 Zhan and Wu (2009) recognized the hyper-spectral altered rock using an improved algorithm based
5 on PSO and neural network. The point was mentioned in their paper that PSO can be improved into
6 two parts; reinforcing the particles diversity and avoiding the prematurity of particle swarm. Field
7 survey of altered rock spectral data was used to investigate samples of illite, chlorite, gypsum and
8 kaolinite for using in the network. To show the ability of the improved PSO-BP model, the network
9 was also modelled using BP algorithm. The results indicated that the BP algorithm easily falls into the
10 local minima whereas the proposed PSO-BP method can be effectively applied to identify the altered
11 rocks.
12
13
14
15
16
17
18
19
20
21
22
23
24
25

26 **3.4. Soil Mechanics**

27
28 PSO have successfully encountered with some problems in soil mechanics such as determination of
29 soil erosion characteristics, behavior of unsaturated soil, soil-structure interaction, and soil
30 parameters.
31
32
33
34
35

36 Yunkai *et al.* (2010) predicted soil erosion characteristics in small watersheds using a combination of
37 SVM and PSO. In fact, they introduced the application of PSO for automatic selection of SVM
38 parameters and presented a model by linking PSO and SVM for small sample data analysis. The
39 predicting model in this study was based on the monitoring data of sand production. According to the
40 results, the proposed model can simulate successfully the erosion characteristics in small watersheds
41 with low degree of average error (3.85%).
42
43
44
45
46
47
48
49

50 Zhang *et al.* (2009 and 2013) utilized a hybrid moving boundary PSO (HMPSO) method to minimize
51 the difference between measured (field data) and computed values on the cavity pressure-cavity strain
52 curve in unsaturated soil. They used the HMPSO algorithm to select parameter values in the
53 Barcelona Basic Model (BBM) which is one of the best known constitutive models for unsaturated
54 soils. Field data were obtained from Suction Monitored Pressuremeter tests, which employ
55
56
57
58
59
60
61
62
63
64
65

1 tensiometers to measure suction. The computed cavity pressure-cavity strain curve was obtained using
2 finite element model of an unsaturated soil. In their study, an HMPSO algorithm was used to identify
3 model parameters of field Pressuremeter tests. The combination of field Pressuremeter tests, finite
4 element results and the HMPSO algorithm introduces a practical technique to determine parameter
5 values for geotechnical modelling in unsaturated soils.
6
7
8
9

10
11 Fontan *et al.* (2011) used PSO algorithm and finite element (FE) method to develop an inverse
12 identification process. The objective here was to recognize the equivalent structure stiffness that
13 mimics soil-structure interaction problem. For this purpose, experimental tests and FE analysis were
14 conducted to validate methodology and to show the role of the input data (displacement) on the
15 identification quality. In this study, a general frame based on different combination tools (inverse
16 analysis, FE and PSO techniques) was developed to solve the problem. PSO was utilized for treatment
17 of the mechanical properties recognition. They concluded that the combination of aforementioned
18 methods is able to investigate the parameters related to inverse problem.
19
20
21
22
23
24
25
26
27
28
29

30 Sadoghi Yazdi *et al.* (2012) calibrated the soil parameters using the linear elastic-hardening plastic
31 constitutive model and the Drucker-Prager yield criterion by the combination of the neuro-fuzzy
32 (ANFIS) and PSO model. For providing nonlinear relationship between the deviatoric stress and axial
33 strain (σ_d - ϵ) resulted from a consolidated drained triaxial test on sand samples, an ANFIS model was
34 used in this study. According to Fig. 6, PSO was utilized to determine soil model parameters. For
35 verification of the accuracy and applicability of the proposed technique, a series of data obtained from
36 different confining pressures was modelled using the proposed model. The outcome showed a close
37 match with the same order of accuracy.
38
39
40
41
42
43
44
45
46
47
48
49
50

51 **3.5. Tunneling and Underground Space Design**

52
53 Since tunneling deals with many uncertainties, the conventional empirical and analytical methods face
54 with some difficulties in tunnel designing. Based on the applicability of PSO in finding the optimum
55 solution, its applications have been developed in different aspects of tunnel design such as prediction
56
57
58
59
60
61
62
63
64
65

1
2 of tunneling-induced ground movements and building damage, determining the rock displacements
3 around a tunnel, finding the optimized supporting system parameters, and obtaining the optimized
4 performance of tunnel boring machines (TBM).
5

6
7 Hajihassani (2013) developed hybrid PSO-based ANN model to predict three dimensional ground
8 movements induced by tunneling. For that reason, an extensive database consisting of measured
9 settlements, geotechnical parameters and tunneling parameters were collected From Karaj Tunnel in
10 Iran. In order to assess the ability and accuracy of the proposed model, the predicted ground
11 movements using proposed model were compared with the measured settlements. In addition, for a
12 particular point, ground movements were obtained using FE analysis and the results were compared
13 with the proposed model. He indicated that the proposed model is able to eliminate the limitations of
14 the current methods and is an applicable tool to predict three-dimensional tunneling-induced ground
15 movements with high degree of accuracy.
16
17

18
19 A research has been conducted by Xing *et al.* (2010) to study the adaptive control of tunnel
20 excavation in rock. Focusing on the uncertainty of underground engineering, they introduced PSO
21 application to recognize rock mechanical parameters and obtaining the optimum supporting
22 parameters. Using the in-situ monitoring displacements, they obtained rock mechanics parameters and
23 subsequently optimized anchor parameters using these parameters. Furthermore, they investigated the
24 process of combining PSO with 3D fast Lagrange numerical method and applied this method to
25 Dalian Gezhenpu tunnel in China. They resulted that the PSO arithmetic can be easily realized and the
26 proposed method provides a new way to inform construction design. Annan and Zhiwu (2011) also
27 used an improved PSO to optimize the anchor and spay layer parameters in rock tunneling. They
28 applied the presented method in metro tunnel of Dalian City in China with satisfied results. A similar
29 study on the rock displacements around a tunnel was conducted by Jiang *et al.* (2011). They employed
30 a combination of PSO and SVM to identify the nonlinear relationship between tunnel parameters and
31 displacements around a tunnel. For this purpose, they used numerical analysis to produce training and
32 testing samples. Afterwards, they utilized SVM to determine the nonlinear relationship between
33
34
35
36
37
38
39
40
41
42
43
44
45
46
47
48
49
50
51
52
53
54
55
56
57
58
59
60
61
62
63
64
65

1 parameters and displacements. The parameters of SVM were determined using PSO algorithm and the
2 results were validated with a case study.
3

4 Performance prediction of hard rock TBM is a complex and essential task in mechanized excavation
5 which may reduce the risks related to high capital costs. Yagiz and Karahan (2011) employed PSO
6 algorithm to predict the performance of TBM using a database consisting of intact rock parameters,
7 rock mass properties and field machine performance data. They generated seven different PSO models
8 employing the variety of datasets with various percentages of rock type and concluded that the PSO is
9 applicable to predict TBM penetration rate precisely.
10
11
12
13
14
15
16

17 In addition to abovementioned application, PSO algorithm was employed to increase the ANN
18 applicability in modeling the trench layer location around a pipeline. In this respect, Janalizadeh
19 Choobbasti *et al.* (2014) utilized an integrated PSO-ANN model to determine the optimum locations
20 of a trench layer around a pipeline. The local radial basis function differential quadrature (LRBF-DQ)
21 method was used in their study to obtain the pore pressure and the obtained data were utilized to train
22 the ANN. Finally, PSO was used to determine the best location of trench later. The results
23 demonstrated the minimum liquefaction is happened when the trench layer is placed beneath the
24 pipeline.
25
26
27
28
29
30
31
32
33
34
35
36
37
38
39

40 **3.6. Other Applications**

41 In addition to aforementioned applications, PSO algorithm has been employed in optimization
42 problems of varies geotechnical engineering fields. Hajihassani et al. (2014) employed PSO as the
43 training algorithm of ANN to predict environmental impacts of blasting operation, including the
44 flyrock and ground vibration. The PSO was used in their study as optimization algorithm to achieve
45 the best weights and biases for applying in ANN. Collected datasets from blasting operations
46 including the most influential parameters on flyrock distance and ground vibration were considered in
47 their study. The proposed models presented satisfactory results to predict flyrock distance and ground
48 vibration with a high degree of precision.
49
50
51
52
53
54
55
56
57
58
59
60
61
62
63
64
65

1 To minimize maintenance-related, Xu and Zeng (2010) utilized PSO algorithm to solve a dynamic
2 equipment allocation problem (DEAP) through the operation of a concrete-faced rock-fill dam. As an
3 important maximization factor in construction throughput, the uncertainties associated with equipment
4 failures were considered in a mathematical model. Their model was confined by initial and constraint
5 conditions. Afterwards, PSO algorithm was implemented to find the optimum solution of the DEAP.
6
7 The Shuibuya Hydropower Project was utilized to investigate the applicability and efficiency of the
8 propose method. The results demonstrated that the proposed optimization model is applicable and
9 efficient in solving the DEAP with uncertainties.
10

11 Based on PSO algorithm, a decision support system was proposed by Wang *et al.* (2011) to reduce the
12 disequilibrium degree of filling intensity in rock-fill dams. They analyzed the main affecting
13 parameters on substage-zoning filling design and proposed an optimization model based on analyses.
14
15 Based upon this, a decision support system for the substage-zoning filling design of rock-fill dams
16 was developed. They employed the proposed model in a hydropower project and demonstrated the
17 applicability of the proposed model in various types of rock-fill dams.
18
19
20
21
22
23
24
25
26
27
28
29
30

31 **4. Conclusions**

32
33
34
35
36
37
38 Complex and not well-understood problems are the common obstacles in geotechnical engineering. In
39 this regard, finding the optimum solution is difficult and even impossible in some cases.
40
41
42 Consequently, PSO has been extensively used in geotechnical engineering as a powerful optimization
43 technique to find the optimum solution. Simplicity of the operations and reasonability of the results
44 have paved the way to use PSO in various fields of geotechnical engineering such as slope stability
45 analysis, pile and foundation engineering, rock and soil mechanics, and tunneling and underground
46 space design.
47
48
49
50
51

52
53
54 In PSO algorithm, each individual learns not only from its own experience, but also from the others,
55 especially from the best particle. Therefore, PSO presents some advantages over conventional
56 optimization techniques by using simultaneous combination of particles cooperation and competition.
57
58
59
60
61
62

1
2
3
4
5
6
7
8
9
10
11
12
13
14
15
16
17
18
19
20
21
22
23
24
25
26
27
28
29
30
31
32
33
34
35
36
37
38
39
40
41
42
43
44
45
46
47
48
49
50
51
52
53
54
55
56
57
58
59
60
61
62
63
64
65

Despite the advantages of PSO in solving the complex engineering problems, it should be applied with caution in consequence of the fact that divergence phenomenon happens occasionally in its optimization process. In addition, local solutions may trap PSO by setting inappropriate initial parameters in which depend on the condition of each problem. Consequently, the application of PSO should be always with caution and conducting sensitivity analysis on initial parameters to avoid returning disappointing results.

References

- Annan, J., and Zhiwu, W. (2011). "Optimizing Supporting Parameters of Metro Tunnel Based on Improved Particle Swarm Optimization Arithmetic." *Procedia Engineering*, Vol. 15, pp. 4857-4861, DOI: 10.1016/j.proeng.2011.08.906.
- Antoniou, P., Pitsillides, A., Blackwell, T., and Engelbrecht, A. (2009). "Employing the flocking behavior of birds for controlling congestion in autonomous decentralized networks" 2009 IEEE Congress on Evolutionary Computation, pp. 1753-1761.
- Antoniou, P., Pitsillides, A., Blackwell, T., Engelbrecht, A., and Michael, L. (2013). "Congestion control in wireless sensor networks based on bird flocking behavior.: *Computer Networks*, Vol. 57, No. 5, pp. 1167-1191, DOI: 10.1016/j.comnet.2012.12.008.
- Babanouri, N., Nasab, S. K., and Sarafrazi, S. (2013). "A hybrid particle swarm optimization and multi-layer perceptron algorithm for bivariate fractal analysis of rock fractures roughness." *International Journal of Rock Mechanics and Mining Sciences*, Vol. 60, pp. 66-74, DOI: 10.1016/j.ijrmms.2012.12.028.
- Bolton, H., Heymann, G., and Groenwold, A. (2003). "Global search for critical failure surface in slope stability analysis." *Engineering Optimization*, Vol. 35, No. 1, pp. 51-65.
- Chen, D., Zhao, C., and Zhang, H. (2011). "An improved cooperative particle swarm optimization and its application". *Neural Computing and Applications*, Vol. 20, No. 2, pp. 171-182, DOI: 10.1007/s00521-010-0503-4.
- Chen, J.H., Yang, L.R., and Su, M.C. (2009). "Comparison of SOM-based optimization and particle swarm optimization for minimizing the construction time of a secant pile wall." *Automation in Construction*, Vol. 18, No. 6, pp. 844-848, DOI: 10.1016/j.autcon.2009.03.008.
- Chen, Y., Wei, X., and Li, Y. (2006). "Locating non-circular critical slip surfaces by particle swarm optimization algorithm." *Chinese Journal of Rock Mechanics and Engineering*, Vol. 25, No. 7, pp. 1443-1449.
- Cheng, Y.M., Li, D. Z., Li, L., Sun, Y. J., Baker, R., and Yang, Y. (2011). "Limit equilibrium method based on an approximate lower bound method with a variable factor of safety that can consider

residual strength.” *Computers and Geotechnics*, Vol. 38, No. 5, pp. 623-637, DOI: 10.1016/j.compgeo.2011.02.010.

Cheng, Y.M., Li, L., and Chi, S.C. (2007). “Performance studies on six heuristic global optimization methods in the location of critical slip surface.” *Computers and Geotechnics*, Vol. 34, No. 6, pp. 462-484, DOI: 10.1016/j.compgeo.2007.01.004.

Cheng, Y.M., Li, L., Sun, Y.J., and Au, S. K. (2012). “A coupled particle swarm and harmony search optimization algorithm for difficult geotechnical problems.” *Structural and Multidisciplinary Optimization*, Vol. 45, No. 4, pp. 489-501, DOI: 10.1007/s00158-011-0694-z.

Cheng, Y.M., Liu, H.T., Wei, W.B., and Au, S.K. (2005). “Location of critical three-dimensional non-spherical failure surface by NURBS functions and ellipsoid with applications to highway slopes.” *Computers and Geotechnics*, Vol. 32, No. 6, pp. 387-399, DOI: 10.1016/j.compgeo.2005.07.004.

Choobbasti, A.J., Tavakoli, H., and Kutanaei, S.S. (2014). “Modeling and optimization of a trench layer location around a pipeline using artificial neural networks and particle swarm optimization algorithm.” *Tunnelling and Underground Space Technology*, Vol. 40, pp. 192-202, DOI: 10.1016/j.tust.2013.10.003.

Ciuprina, G., Ioan, D., and Munteanu, I. (2002). “Use of intelligent particle swarm optimization in electromagnetics.” *IEEE Transactions on Magnetics*, Vol. 38, No. 10, pp. 1037-1040.

Clerc, M., and Kennedy, J. (2002). “The particle swarm-explosion, stability, and convergence in a multidimensional complex space.” *IEEE transactions on Evolutionary Computation*, Vol. 6, No. 1, pp. 58-73.

Cui, Z., and Gao, X. (2012). “Theory and applications of swarm intelligence.” *Neural Computing & Applications*, Vol. 21, No. 2, pp. 205-206, DOI: 10.1007/s00521-011-0523-8.

Dorigo, M., and Blum, C. (2005). “Ant colony optimization theory: A survey.” *Theoretical computer science*, Vol. 344, No. 2, pp. 243-278, DOI:10.1016/j.tcs.2005.05.020.

Eberhart, R.C, and Kennedy, J. (1995). “A new optimizer using particle swarm theory.” *Proceeding of the Sixth International Symposium on Micro Machine and Human Science*, IEEE, Nagoya, Japan, pp. 39-43.

Eberhart, R.C., and Shi, Y. (2000). “Comparing inertia weights and constriction factors in particle swarm optimization.” *Proceeding of Congress Evolutionary Computation*, NJ:IEEE Press, pp. 84-88.

Engelbrecht, A.P. (2007). “Computational intelligence: an introduction.” John Wiley & Sons.

Feng, X.T., Chen, B.R., Yang, C., Zhou, H., and Ding, X. (2006). “Identification of visco-elastic models for rocks using genetic programming coupled with the modified particle swarm optimization algorithm.” *International Journal of Rock Mechanics and Mining Sciences*, Vol. 43, No. 5, pp. 789-801, DOI: 10.1016/j.ijrmms.2005.12.010.

- 1 Fontan, M., Ndiaye, A., Breyse, D., Bos, F., and Fernandez, C. (2011). "Soil-structure interaction:
2 Parameters identification using particle swarm optimization. *Computers & Structures*, Vol. 89,
3 No. 17, pp. 1602-1614, DOI: 10.1016/j.compstruc.2011.05.002.
- 4
5 Gholizadeh, S., and Salajegheh, E. (2009). "Optimal design of structures subjected to time history
6 loading by swarm intelligence and an advanced metamodel." *Computer Methods in Applied*
7 *Mechanics and Engineering*, Vol. 198, No. 37, pp. 2936-2949, DOI:
8 10.1016/j.cma.2009.04.010.
- 9
10
11 Hajihassani, M. (2013). "Tunneling-Induced Ground Movement and Building Damage Prediction
12 Using Hybrid Artificial Neural Networks." PhD diss., Universiti Teknologi Malaysia.
- 13
14
15
16
17 Hajihassani, M., Jahed Armaghani, D., Monjezi, M., Mohamad, E.T., and Marto, A. (2015). "Blast-
18 induced air and ground vibration prediction: a particle swarm optimization-based artificial
19 neural network approach." *Environmental Earth Sciences*, Vol. 74, No. 4, pp. 2799-2817, DOI:
20 10.1007/s12665-015-4274-1.
- 21
22
23 Hajihassani, M., Jahed Armaghani, D., Sohaei, H., Mohamad, E.T., and Marto, A. (2014).
24 "Prediction of airblast-overpressure induced by blasting using a hybrid artificial neural network
25 and particle swarm optimization." *Applied Acoustics*, Vol. 80, pp.57-67, DOI:
26 10.1016/j.apacoust.2014.01.005.
- 27
28
29 Hossain, M.S., and El-Shafie, A. (2014). "Evolutionary techniques versus swarm intelligences:
30 application in reservoir release optimization." *Neural Computing and Applications*, Vol. 24,
31 No. 7, pp. 1583-1594, DOI: 10.1007/s00521-013-1389-8.
- 32
33
34 Ismail, A., and Jeng, D.S. (2012). "Empirical Method for Settlement Prediction of Single Piles Using
35 Higher Order Neural Network and Particle Swarm Optimization." In *Geo Congress 2012, State*
36 *of the Art and Practice in Geotechnical Engineering*, pp. 285-294.
- 37
38
39 Ismail, A., Jeng, D. S., and Zhang, L. L. (2013). "An optimised product-unit neural network with a
40 novel PSO–BP hybrid training algorithm: Applications to load-deformation analysis of axially
41 loaded piles." *Engineering applications of artificial intelligence*, Vol. 26, No. 10, pp. 2305-
42 2314, DOI: 10.1016/j.engappai.2013.04.007.
- 43
44
45 Jahed Armaghani, D., Hajihassani, M., Mohamad, E.T., Marto, A., and Noorani, S.A. (2014).
46 "Blasting-induced flyrock and ground vibration prediction through an expert artificial neural
47 network based on particle swarm optimization." *Arabian Journal of Geosciences*, Vol. 7, No.
48 12, pp. 5383-5396, DOI: 10.1007/s12517-013-1174-0.
- 49
50
51
52 Jahed Armaghani, D., Hajihassani M, Yazdani Bejarbaneh B, Marto A, and Tonnizam Mohamad, E.
53 (2014). "Indirect measure of shale shear strength parameters by means of rock index tests
54 through an optimized artificial neural network." *Measurement*, Vol. 55, pp. 487–498, doi:
55 10.1016/j.measurement.2014.06.001.
- 56
57
58 Jiang, A.N., Wang, S.Y., and Tang, S.L. (2011). "Feedback analysis of tunnel construction using a
59 hybrid arithmetic based on Support Vector Machine and Particle Swarm
60

- Optimisation.” *Automation in Construction*, Vol. 20, No. 4, pp. 482-489, DOI: 10.1016/j.autcon.2010.11.016.
- Jiang, J.C., Yamagami, T., Baker, R. (2003). “Three-Dimensional Slope Stability Analysis Based on Nonlinear Failure Envelope.” *Chinese Journal of Rock Mechanics Engineering*, Vol. 22, pp. 1017-1023.
- Kalatehjari. R. (2013). “An improvised three-dimensional slope stability analysis based on limit equilibrium method by using particle swarm optimization.” PhD Dissertation, Universiti Teknologi Malaysia.
- Kalatehjari, R., and Ali, N. (2013). “A review of three-dimensional slope stability analyses based on limit equilibrium method.” *Electronic Journal of Geotechnical Engineering*, Vol. 18, pp. 119-134.
- Kalatehjari, R., Ali, N., Hajihassani, M., and Kholghi Fard, M. (2012). ”The application of particle swarm optimization in slope stability analysis of homogeneous soil slopes.” *International Review on Modelling and Simulations*, Vol. 5, No. 1, pp. 458-465.
- Kalatehjari, R., Ali, N., Kholghifard, M., and Hajihassani, M. (2014). “The effects of method of generating circular slip surfaces on determining the critical slip surface by particle swarm optimization.” *Arabian Journal of Geosciences*, Vol. 7, No. 4, pp. 1529-1539, 10.1007/s12517-013-0922-5.
- Kang, F., Li, J.J., Hu, J. (2006). “Combined forecasting model for slope stability based on support vector machines with particle swarm optimization.” *Rock and Soil Mechanics*, Vol. 27, pp. 648-652.
- Karaboga, D., and Basturk, B. (2008). “On the performance of artificial bee colony (ABC) algorithm.” *Applied soft computing*. Vol. 8, No. 1, pp. 687-697, DOI: 10.1016/j.asoc.2007.05.007.
- Karaboga, D., and Basturk, B. (2007). “A powerful and efficient algorithm for numerical function optimization: artificial bee colony (ABC) algorithm.” *Journal of global optimization*. Vol. 39, pp. 459-471.
- Kennedy, J., and Eberhart, R. (1995). “Particle swarm optimization.” *Proceeding of the IEEE International Conference on Neural Networks*, Perth, Australia, pp. 1942-1948.
- Khajehzadeh, M., El-Shafie, A., and Taha, M. R. (2010). “Modified particle swarm optimization for probabilistic slope stability analysis.” *International Journal of Physical Sciences*, Vol. 5, No. 15, pp. 2248-2258.
- Khajehzadeh, M., Taha, M. R., and El-Shafie, A. (2011). “Reliability analysis of earth slopes using hybrid chaotic particle swarm optimization.” *Journal of Central South University of Technology*, Vol. 18, No. 5, pp.1626-1637, DOI: 10.1007/s11771-011-0882-4.
- Kitagawa, S., Takenaka, M., and Fukuyama, Y. (2004). “Recent optimization techniques and applications to customer solutions.” *Fuji Electric Journal*, Vol. 77, No. 2, pp. 137-141.

- 1 Kuok, K.K., Harun, S., and Shamsuddin, S.M. (2010). "Particle swarm optimization feedforward
2 neural network for modeling runoff." *International Journal of Environmental Science &
3 Technology*, Vol. 7, No. 1, pp. 67-78, DOI: 10.1007/BF03326118.
- 4
5 Li, H., Zhong, H., Yan, Z., and Zhang, X. (2012). "Particle swarm optimization algorithm coupled
6 with finite element limit equilibrium method for geotechnical practices." *Math Prob Eng*,
7 Article number 498690.
- 8
9
10 Li, L., Chi, S.C., and Lin, G. (2005). "Improved complex method based on particle swarm
11 optimization algorithm and its application to slope stability analysis." *Rock AND Soil
12 Mechanics* Vol. 26, No. 9, p. 1393.
- 13
14 Li, L., Chi, S.C., and Zheng, Y.M. (2008). "Three-dimensional slope stability analysis based on
15 ellipsoidal sliding body and simplified JANBU method." *Rock and Soil Mechanics*, Vol. 29,
16 No. 9, pp. 2439-2445.
- 17
18
19 Li, L., and Chu, X. S. (2011). "An improved particle swarm optimization algorithm with harmony
20 strategy for the location of critical slip surface of slopes." *China Ocean Engineering*, Vol. 25,
21 pp.357-364, DOI: 10.1007/s13344-011-0030-9.
- 22
23
24 Li, L., Yu, G., Chu, X., and Lu, S. (2009). "The harmony search algorithm in combination with
25 particle swarm optimization and its application in the slope stability analysis." *Proceeding of
26 the International Conference on Computational Intelligence and Security*, Beijing, China, pp.
27 133-136.
- 28
29
30 Li, L., Yu, G.M., Chen, Z.Y., and Chu, X.S. (2010). "Discontinuous flying particle swarm
31 optimization algorithm and its application to slope stability analysis." *Journal of Central South
32 University of Technology*, Vol. 17, pp. 852-856, DOI: 10.1007/s11771-010-0566-5.
- 33
34
35 Li, X.L., and Qian, J.X. (2003). "Studies on Artificial Fish Swarm Optimization Algorithm based on
36 Decomposition and Coordination Techniques." *Journal of Circuits and Systems*, Vol. 1, pp. 1-6.
- 37
38
39 Liou, S.W., Wang, C.M., and Huang, Y.F. (2009). "Integrative Discovery of Multifaceted Sequence
40 Patterns by Frame-Relayed Search and Hybrid PSO-ANN." *Journal of Universal Computer
41 Science*, vol. 15, No. 4, pp. 742-764.
- 42
43
44 Lovbjerg, M., Rasmussen, T.K., and Krink, T. (2001). "Hybrid particle swarm optimizer with
45 breeding and subpopulations." *Proceeding of the third Genetic and Evolutionary Computation
46 Conference*, San Francisco, pp. 469-476.
- 47
48
49 Lü, Z.S., Hou, Z.R., and Du, J. (2006). "Particle swarm optimization with adaptive mutation."
50 *Frontiers of Electrical and Electronic Engineering in China*, Vol. 1, No. 1, pp. 99-104, DOI:
51 10.1007/s11460-005-0021-9.
- 52
53
54 Mashhadban, H., Kutanaei, S.S., and Sayarinejad, M.A. (2016). "Prediction and modeling of
55 mechanical properties in fiber reinforced self-compacting concrete using particle swarm
56 optimization algorithm and artificial neural network." *Construction and Building Materials*,
57 Vol. 119, pp. 277-287, DOI: 10.1016/j.conbuildmat.2016.05.034.
- 58
59
60
61
62
63
64
65

- 1
2
3
4
5
6
7
8
9
10
11
12
13
14
15
16
17
18
19
20
21
22
23
24
25
26
27
28
29
30
31
32
33
34
35
36
37
38
39
40
41
42
43
44
45
46
47
48
49
50
51
52
53
54
55
56
57
58
59
60
61
62
63
64
65
- Miranda, V., and Fonseca, N. (2002). "New evolutionary particle swarm algorithm applied to voltage/var control." 14th Power Systems Computation Conference, pp. 1-6.
- Mowen, X., Zengfu, W., Xiangyu, L., and Bo, X. (2011). "Three-dimensional critical slip surface locating and slope stability assessment for lava lobe of Unzen volcano." *Journal of Rock Mechanics and Geotechnical Engineering*, Vol. 3, No. 1, pp. 82-89, DOI: 10.3724/SP.J.1235.2011.00082.
- Mowen, X. J. E. (2004). "A Simple Monte Carlo Method for Locating the Three-dimensional Critical Slip Surface of a Slope." *Acta Geologica Sinica (English Edition)*, Vol. 78, No. 6, pp. 1258-1266.
- Najafzadeh, M., and Tafarajnoruz, A. (2016). "Evaluation of neuro-fuzzy GMDH-based particle swarm optimization to predict longitudinal dispersion coefficient in rivers." *Environmental Earth Sciences*, Vol. 75, No. 2, pp. 1-12, DOI: 10.1007/s12665-015-4877-6.
- Neshat, M. (2013). "FAIPSO: fuzzy adaptive informed particle swarm optimization." *Neural Computing and Applications*, Vol. 23, No. 1, pp. 95-116, DOI: 10.1007/s00521-012-1256-z.
- Neshat, M., Sepidnam, G., and Sargolzaei, M. (2013). "Swallow swarm optimization algorithm: a new method to optimization". *Neural Computing and Applications*. Vol. 23, No. 2, pp. 429-454, DOI: 10.1007/s00521-012-0939-9.
- Ni, Q., Deng, J. (2013). "A New Logistic Dynamic Particle Swarm Optimization Algorithm Based on Random Topology." *The Scientific World Journal*. DOI: 10.1155/2013/409167.
- Poitras, G., Lefrançois, G., and G. Cormier. (2011). "Optimization of steel floor systems using particle swarm optimization." *Journal of Constructional Steel Research*, Vol. 67, No. 8, pp. 1225-1231, DOI: 10.1016/j.jcsr.2011.02.016.
- Poli, R., Kennedy, J., and Blackwell, T. (2007). "Particle swarm optimization." *Swarm intelligence*, Vol. 1, No. 1, pp. 33-57, DOI: 10.1007/s11721-007-0002-0.
- Reynolds, C.W. (1987). "Flocks, herds and schools: A distributed behavioral model." *ACM SIGGRAPH computer graphics*, Vol. 21, No. 4, pp.25-34.
- Robinson, J., Sinton, S., and Rahmat-Samii, Y. (2002). "Particle swarm, genetic algorithm, and their hybrids: optimization of a profiled corrugated horn antenna." 2002 IEEE Antennas and Propagation Society International Symposium, pp. 314-317.
- Sadoghi Yazdi, J., Kalantary, F., and Sadoghi Yazdi, H. (2011). "Calibration of soil model parameters using particle swarm optimization." *International Journal of Geomechanics*, Vol. 12, No. 3, pp. 229-238, DOI: 10.1061/(ASCE)GM.1943-5622.0000142.
- Shi, Y., and Eberhart, R.C. (1998). "A Modified Particle Swarm Optimizer." *Proceeding of the IEEE International Conference of Evolutionary Computation*, Piscataway, pp. 69-73.
- Taha, M.R., Khajehzadeh, M., and El-Shafie, A. (2012). "Application of particle swarm optimization in evaluating the reliability of soil slope stability analysis." *Sains Malaysia*, Vol. 41, No. 7, pp. 847-854.

- 1
2
3
4
5
6
7
8
9
10
11
12
13
14
15
16
17
18
19
20
21
22
23
24
25
26
27
28
29
30
31
32
33
34
35
36
37
38
39
40
41
42
43
44
45
46
47
48
49
50
51
52
53
54
55
56
57
58
59
60
61
62
63
64
65
- Toufigh, M.M., Ahangarar, A., and Ouria, A. (2006). "Using non-linear programming techniques in determination of the most probable slip surface in 3D slopes." *World Academy of Science, Engineering and Technology*, Vol. 17, No. 5, pp. 30-35.
- Wan, S. (2013). "Entropy-based particle swarm optimization with clustering analysis on landslide susceptibility mapping." *Environmental earth sciences*, Vol. 68, No. 5, pp. 1349-1366, DOI: 10.1007/s12665-012-1832-7.
- Wang, G., Li, H., and Chu, X. (2010). "Slope stability analysis based on harmony search method and particle swarm optimization method." *Journal of Liaoning Technical University (Natural Science Edition)*, Vol. 29, pp. 208-211.
- Wang, L., Zeng, J., and Xu, L. (2011). "A decision support system for substage-zoning filling design of rock-fill dams based on particle swarm optimization." *Information Technology and Management*, Vol. 12, No. 2, pp. 111-119, DOI: 10.1007/s10799-011-0092-7.
- Wang, S.N., Shi, C., Zhang, Y.L., Chen, K.H. (2013). "Numerical limit equilibrium analysis method of slope stability based on particle swarm optimization." *Appl Mech Mater*, Vol. 353, pp. 247-251, DOI: 10.4028/www.scientific.net/AMM.353-356.247
- Wen-Tao, M.A. (2009). "Evaluation of rock slope stability based on PSO and LSSVM." *Rock and Soil Mechanics*, Vol. 30, No. 3, pp. 845-848.
- Windisch, A., Wappler, S., and Wegener, J. (2007). "Applying particle swarm optimization to software testing." *Proceeding of 9th Annual Conference on Genetic and Evolutionary Computations*, London, UK, pp. 1121-1128.
- Xing, J., Jiang, A., and Qiu, J. (2010). "Studying the adaptive control of tunnel excavation based on numerical simulation and particle swarm optimization." *ICCTP 2010: Integrated Transportation Systems-Green Intelligent Reliable*, pp. 3117-3125.
- Xu, F., Xu, W. Y., Liu, Z. B., and Liu, K. (2011). "Slope stability evaluation based on PSO-PP." *Chinese Journal of Geotechnical Engineering*, Vol. 33, No. 11, pp. 1708-1715.
- Xu, J., and Zeng, Z. (2010). "Applying optimal control model to dynamic equipment allocation problem: case study of concrete-faced rockfill dam construction project." *Journal of Construction Engineering and Management*, Vol. 137, No. 7, pp. 536-550, DOI: 10.1061/(ASCE)CO.1943-7862.0000325.
- Yagiz, S., and Karahan, H. (2011). "Prediction of hard rock TBM penetration rate using particle swarm optimization." *International Journal of Rock Mechanics and Mining Sciences*, Vol. 48, No. 3, pp. 427-433, DOI: 10.1016/j.ijrmms.2011.02.013.
- Yamagami, T., and Jiang J.C. (1997). "A Search for the Critical Slip Surface in Three-dimensional Slope Stability analysis." *Soils and Foundations*, Vol. 37, pp. 1-16, DOI: 10.3208/sandf.37.3_1.
- Yunkai, L., Yingjie, T., Zhiyun, O., Lingyan, W., Tingwu, X., Peiling, Y., and Huanxun, Z. (2010). "Analysis of soil erosion characteristics in small watersheds with particle swarm optimization, support vector machine, and artificial neuronal networks." *Environmental Earth Sciences*, Vol. 60, No. 7, pp. 1559-1568, DOI: 10.1007/s12665-009-0292-1.

- 1
2
3
4
5
6
7
8
9
10
11
12
13
14
15
16
17
18
19
20
21
22
23
24
25
26
27
28
29
30
31
32
33
34
35
36
37
38
39
40
41
42
43
44
45
46
47
48
49
50
51
52
53
54
55
56
57
58
59
60
61
62
63
64
65
- Zhan, Y., and Wu, Y. (2009). "Recognition of Altered Rock Based on Improved Particle Swarm Neural Network." International Symposium on Neural Networks, Springer Berlin Heidelberg, pp. 149-155.
- Zhang, J.R., Zhang, J., Lok, T.M., and Lyu, M.R. (2007). "A hybrid particle swarm optimization–back-propagation algorithm for feedforward neural network training." Applied Mathematics and Computation, Vol. 185, No. 2, pp. 1026-1037, DOI: 10.1016/j.amc.2006.07.025.
- Zhang, Y., Gallipoli, D., and Augarde, C. (2013). "Parameter identification for elasto-plastic modelling of unsaturated soils from pressuremeter tests by parallel modified particle swarm optimization." Computers and Geotechnics, vol. 48, pp. 293-303, DOI: 10.1016/j.compgeo.2012.08.004.
- Zhang, Y., Gallipoli, D., and Augarde, C. (2009). "Parallel hybrid particle swarm optimization and applications in geotechnical engineering." Advances in Computation and Intelligence, Springer Berlin Heidelberg, pp. 466-475.
- Zhang, Y., Xiong, X., and Zhang, Q. (2013). "An improved self-adaptive PSO algorithm with detection function for multimodal function optimization problems." Mathematical Problems in Engineering, DOI: 10.1155/2013/716952.
- Zhao, H.B., and Yin, S. (2010). "A CPSO-SVM model for ultimate bearing capacity determination." Marine Georesources and Geotechnology, Vol. 28, No. 1, pp. 64-75, DOI: 10.1080/10641190903359076.
- Zhao, H.B., and Yin, S. (2009). "Geomechanical parameters identification by particle swarm optimization and support vector machine." Applied Mathematical Modelling, Vol. 33, No. 10, pp. 3997-4012, DOI: 10.1016/j.apm.2009.01.011.
- Zhao, H.B., Zou, Z.S., and Ru, Z.L. (2008). "Chaotic particle swarm optimization for non-circular critical slip surface identification in slope stability analysis." Proceedings of the International Young Scholars' Symposium on Rock Mechanics - Boundaries of Rock Mechanics Recent Advances and Challenges for the 21st Century, Beijing, China, pp. 585-588.
- Zhou, Y.W., Cai, X.J., and Chen, J.B. (2012). "A new method of simulating arbitrary slip surface in soil slope." Applied Mechanics and Materials, Vol. 204, pp. 350-353.

List of Table

Table1 Comparison of metaheuristic methods (Kitagawa *et al.*, 2004)

List of Figures

Fig. 1 Standard flowchart of PSO (Kalatehjari, 2013)

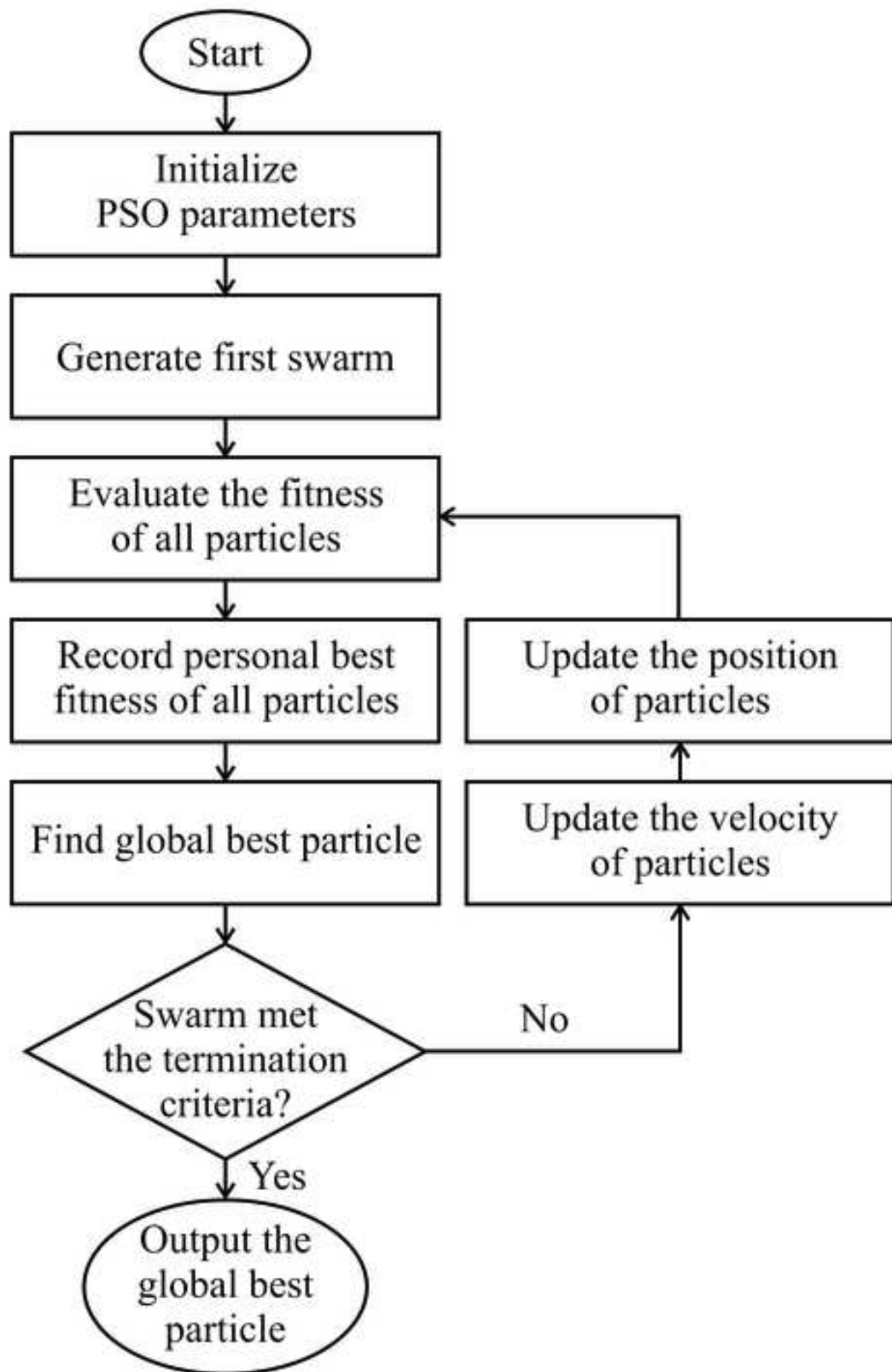
Fig. 2 Schematic structure of a particle in PSO (Kalatehjari, 2013)

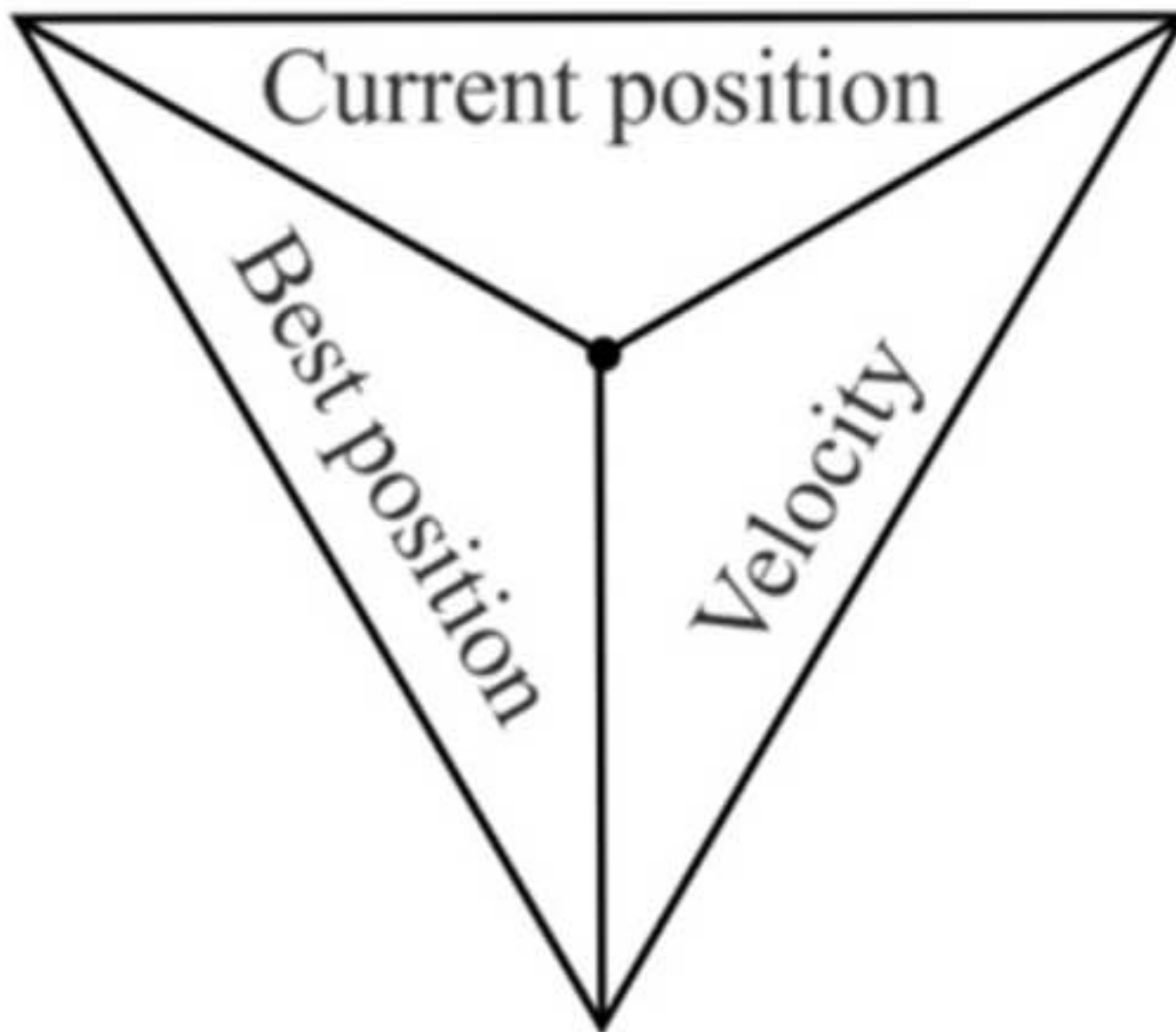
Fig. 3 Flowchart of PSO to determine the critical slip surface in slope stability analysis (Kalatehjari, 2013)

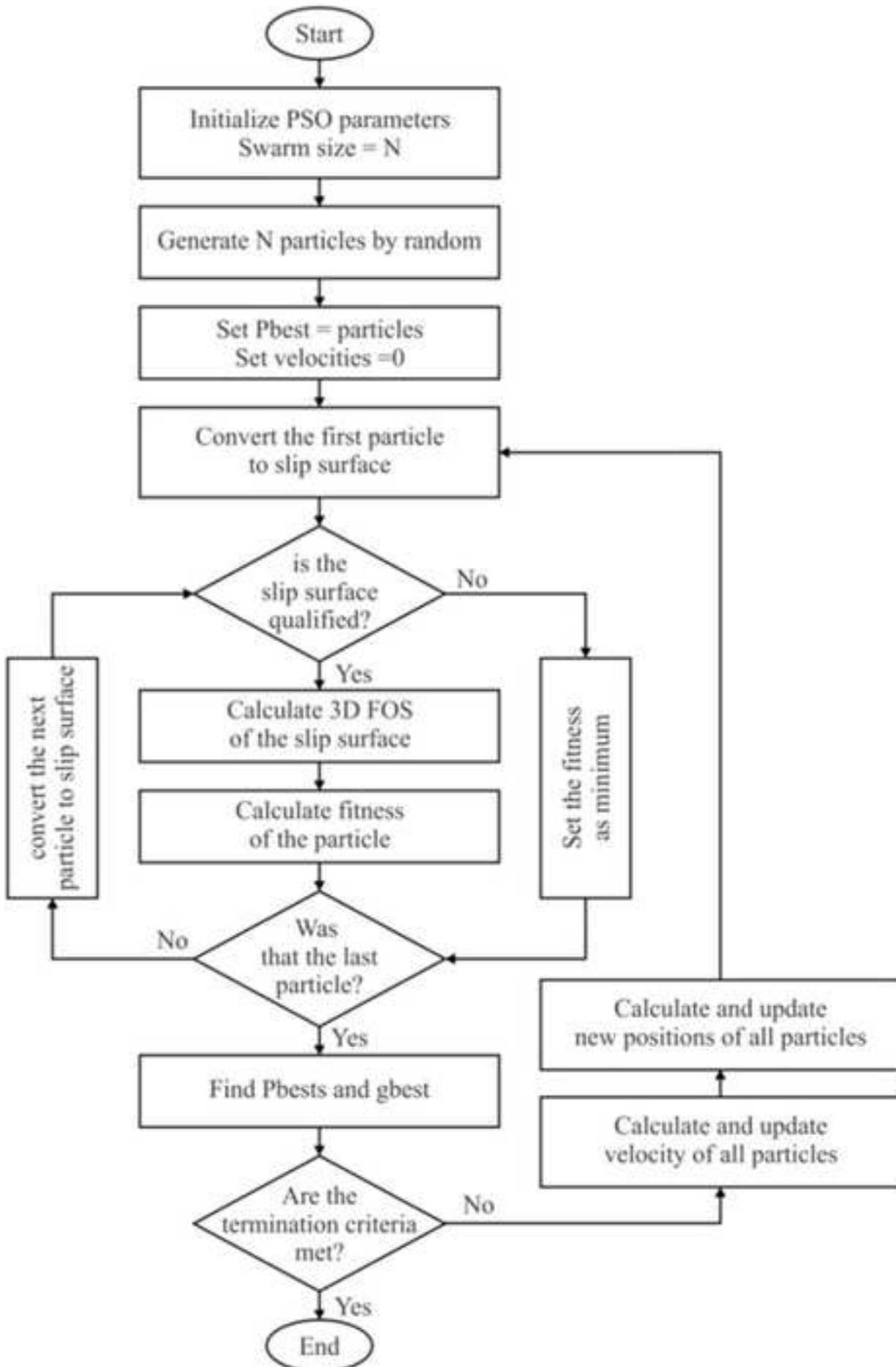
Fig. 4 The flowchart of CPSO-SVM to determine the ultimate bearing capacity (Zhao and Yin, 2010)

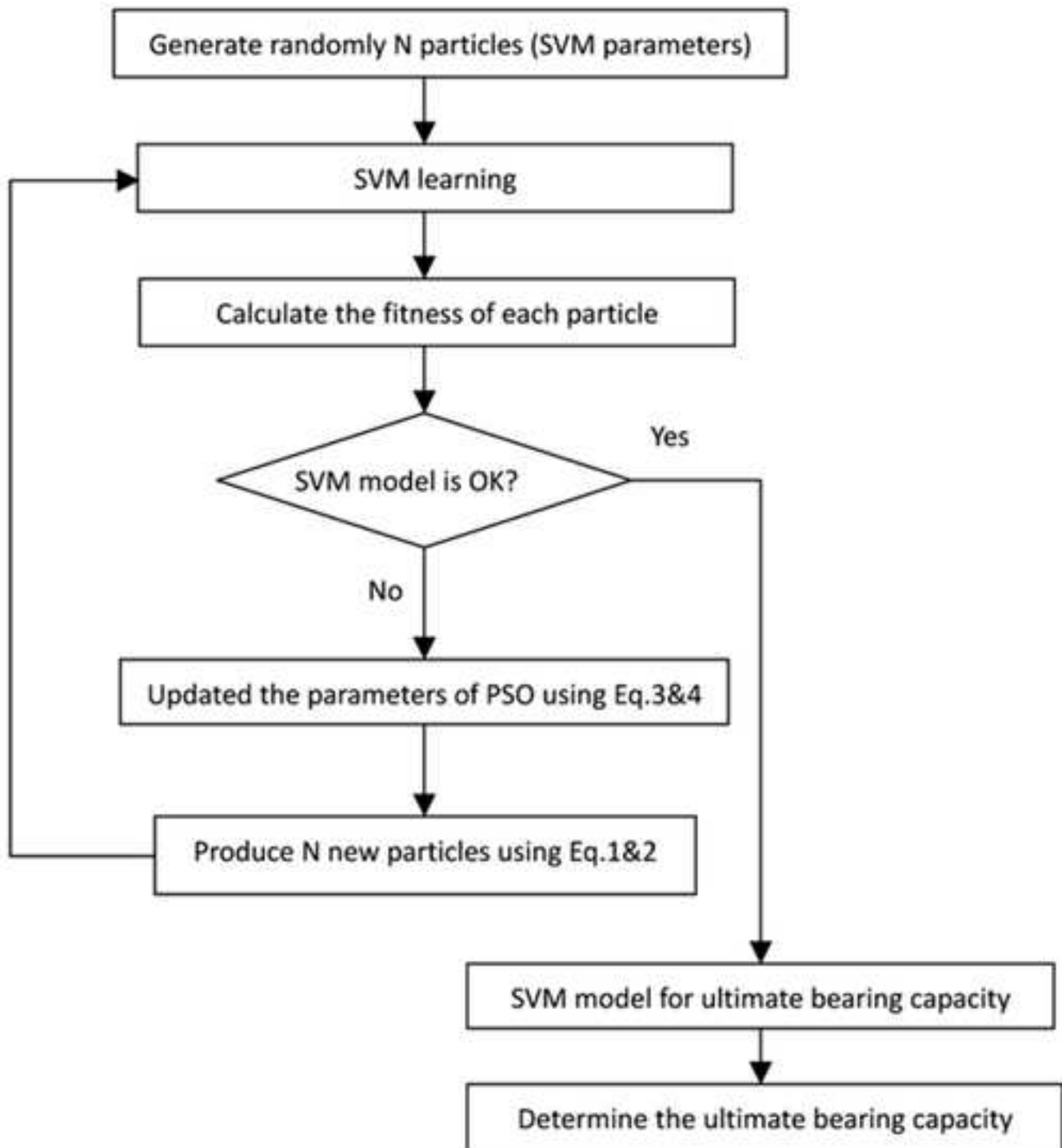
Fig. 5 Intelligent displacement back analysis based on PSO and SVM (Zhao and Yin, 2009)

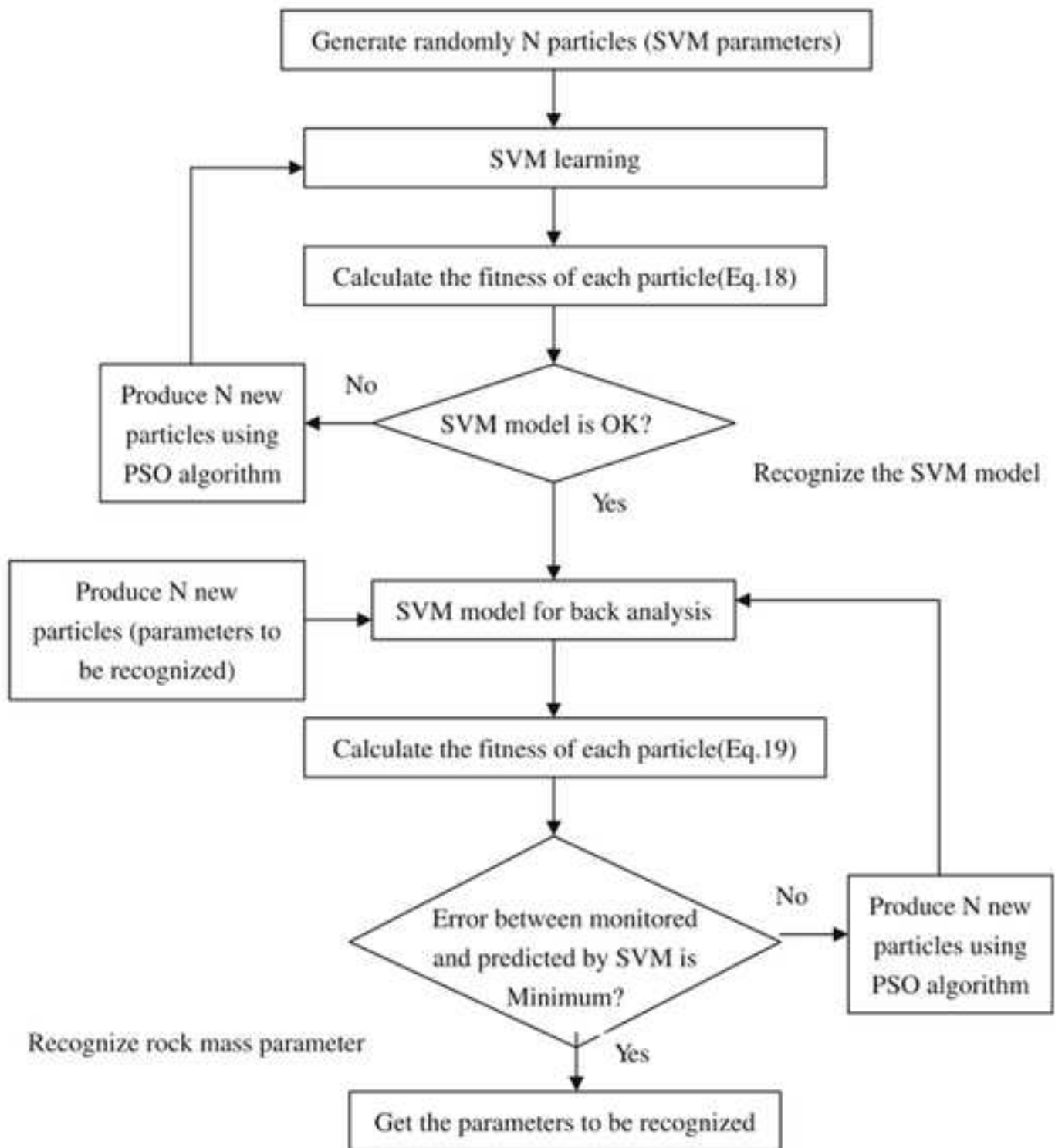
Fig. 6 Combination of PSO and ANFIS techniques for calibration of soil model parameters (Sadoghi Yazdi *et al.*, 2012)











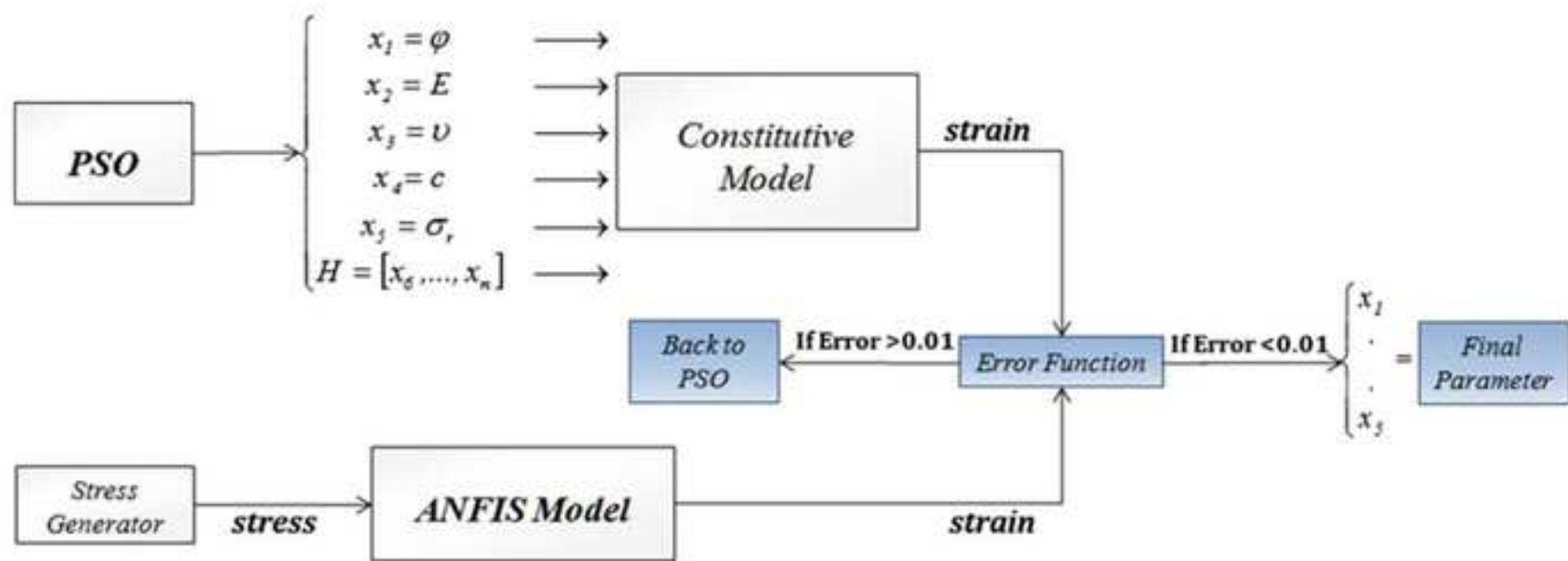


Table1 Comparison of metaheuristic methods (Kitagawa *et al.*, 2004)

Methods	GA¹	SA²	TS³	PSO
Advent	1970s	1983	1989	1995
Target problem	Combinatorial optimization problem	Combinatorial optimization problem	Combinatorial optimization problem	Continues optimization problem, Mixed-integer nonlinear optimization
State variable	Discrete variable	Discrete variable	Discrete variable	Discrete variable, Continuous variable
Search points	Multi-point	Single point	Single point	Multi-point
Run time	Medium	Long	Short	Short
Features	In recent years, application efficacy for multi-objective optimization problems has been under review	A good quality solution can be obtained, but it will require a long amount of time	Good quality solution can be obtained for combinational problems in a shorter amount of time than GA and SA	Good quality solutions can be obtained within a short amount of time for mixed-integer nonlinear optimization problems, for solutions difficult to obtain with conventional methods

¹Genetic Algorithm, ²Simulated Annealing, ³Tabu Search