

A Measure of Monotonicity of Two Random Variables

¹Farida Kachapova and ²Ilias Kachapov
¹School of Computing and Mathematical Sciences,
Faculty of Design and Creative Technology,
Auckland University of Technology, New Zealand
²Examination Academic Services,
University of Auckland, Auckland, New Zealand

Abstract: Problem statement: When analyzing random variables it is useful to measure the degree of their monotone dependence or compare pairs of random variables with respect to their monotonicity. Existing coefficients measure general or linear dependence of random variables. Developing a measure of monotonicity is useful for practical applications as well as for general theory, since monotonicity is an important type of dependence. **Approach:** Existing measures of dependence are briefly reviewed. The Reimann coefficient is generalized to arbitrary random variables with finite variances. **Results:** The article describes criteria for monotone dependence of two random variables and introduces a measure of this dependence-monotonicity coefficient. The advantages of this coefficient are shown in comparison with other global measures of dependence. It is shown that the monotonicity coefficient satisfies natural conditions for a monotonicity measure and that it has properties similar to the properties of the Pearson correlation; in particular, it equals 1 (-1) if and only if the pair X, Y is comonotonic (counter-monotonic). The monotonicity coefficient is calculated for some bivariate distributions and the sample version of the coefficient is defined. **Conclusion/Recommendations:** The monotonicity coefficient should be used to compare pairs of random variables (such as returns from financial assets) with respect to their degree of monotone dependence. In the problems where the monotone relation of two variables has a random noise, the monotonicity coefficient can be used to estimate variance and other central moments of the noise. By calculating the sample version of the coefficient one will quickly find pairs of monotone dependent variables in a big dataset.

Key words: Monotonicity, comonotonic, counter-monotonic, monotone dependence, measure of dependence, Pearson correlation, bivariate distributions, random variables

INTRODUCTION

Dependence of random variables is studied and estimated in various applications (see, for example, Tularam *et al.*, 2010). Two most important types of dependence are linear and monotone dependence. Other types include positive and negative quadrant dependence (see Kimeldorf and Sampson, 1987).

Random variables X and Y are called Positively Quadrant Dependent (PQD) if for any $x, y \in R$, $F_{X,Y}(x, y) \geq F_X(x) \cdot F_Y(y)$.

“Negative Quadrant Dependence (NQD) is defined by reversing the concept of PQD” (Kimeldorf and Sampson, 1987).

Suppose H_1 and H_2 are the joint distribution functions of $\langle X_1, Y_1 \rangle$ and $\langle X_2, Y_2 \rangle$, respectively, with the same marginals; then $\langle X_1, Y_1 \rangle$ is called more PQD than $\langle X_2, Y_2 \rangle$ if for any $x, y \in R$, $H_1(x, y) \geq H_2(x, y)$.

Kimeldorf and Sampson (1978) introduced the concept of monotone dependence as follows: two continuous random variables X and Y are called monotone dependent if there exists a monotone function g, in which $Y = g(X)$ with probability 1.

Global measures of dependence of two random variables include the Pearson correlation ρ , the coefficients of Spearman, Kendall, Schweizer and Wolff and others (see, for example, Scarsini, 1984; Schweizer and Wolff, 1981)

Kimeldorf and Sampson (1978) introduced *monotone correlation* ρ^* and showed that if X and Y are monotone dependent, then $\rho^*(X, Y) = 1$; but the converse is false. Also ρ^* does not distinguish between the increasing and decreasing types of monotonicity.

The Spearman, Kendall and Schweizer-Wolff coefficients can be used to measure monotone dependence but they are more appropriate for ordinal

variables rather than continuous variables, since they depend only on the ranks of the observations.

Schweizer and Wolff (1981) used copulas and metrics to generate several nonparametric measures of dependence. Copulas are a useful technique developed earlier for Pearson, Spearman and Kendall correlations.

Reimann (1992) introduced a measure λ^{**} for PQD random variables X and Y . In this article it is generalized to some random variables X and Y with finite variances; it is shown to measure monotonicity.

MONOTONICITY CONDITIONS

In this article we will consider only non-degenerate random variables (a degenerate random variable is constant almost surely).

As usual, for a random variable X with distribution function F_X , the quantile function F_X^{-1} is defined by:

$$F_X^{-1}(u) = \inf \{x \in \mathbb{R} : F_X(x) \geq u\}, \quad u \in [0, 1],$$

with $\inf \emptyset = +\infty$ by convention.

The quantile function F_X^{-1} is non-decreasing and left-continuous. Other simple properties of the quantile function are listed in the following lemma.

Lemma 1:

- 1) For any $u \in [0, 1]$, $x \in \mathbb{R}$: $F_X^{-1}(u) \leq x \Leftrightarrow u \leq F_X(x)$
1. 2) $F_{Y+\alpha}^{-1}(u) = F_Y^{-1}(u) + \alpha$ for all $u \in (0, 1)$
- 2) If $\beta > 0$, then $F_{\beta Y}^{-1}(u) = \beta F_Y^{-1}(u)$ for all $u \in (0, 1)$
- 3) If $\beta < 0$, then $F_{\beta Y}^{-1}(u) = \beta F_Y^{-1}(1-u)$ for all $u \in (0, 1)$, except a countable or finite set of points

The concepts of comonotonicity and counter-monotonicity were studied by Bauerle and Muller (1998); Denuit and Dhaene (2003); Dhaene *et al.* (2002); Dempster (2002); Rachev (2003). Comonotonicity of a pair of random variables X and Y means their monotone increasing dependence, i.e., their values change in the same direction. Counter-monotonicity of the pair of X and Y means their monotone decreasing dependence, i.e., their values change in opposite directions. Dhaene *et al.* (2002) give a mathematically accurate definition of comonotonicity for n random variables, which we reproduce here for $n = 2$.

1) A set $A \subseteq \mathbb{R}^2$ is called comonotonic if for any of its elements $\langle x_1, y_1 \rangle$ and $\langle x_2, y_2 \rangle$: either $(x_1 \leq x_2 \text{ and } y_1 \leq y_2)$ or $(x_1 \geq x_2 \text{ and } y_1 \geq y_2)$ holds.

2) A pair $\langle X, Y \rangle$ of random variables is said to be comonotonic if it has a comonotonic support.

A counter-monotonic pair $\langle X, Y \rangle$ is defined by changing the second row in 1) to:

either $(x_1 \leq x_2 \text{ and } y_1 \geq y_2)$ or $(x_1 \geq x_2 \text{ and } y_1 \leq y_2)$ holds.

Three criteria for comonotonicity were proven in (Dhaene *et al.*, 2002). In case $n = 2$ they have the following form.

Theorem 1: A pair $\langle X, Y \rangle$ of random variables is comonotonic if and only if one of the following equivalent conditions holds:

- (1) $(\forall x, y \in \mathbb{R}) [F_{X,Y}(x, y) = \min \{F_X(x), F_Y(y)\}]$
- (2) For $U \sim \text{Uniform}(0, 1)$, $\langle X, Y \rangle =^d \langle F_X^{-1}(U), F_Y^{-1}(U) \rangle$
- (3) There exist a random variable Z and non-decreasing functions g, h , such that

$$\langle X, Y \rangle =^d \langle g(Z), h(Z) \rangle$$

Here $F_{X,Y}$ denotes the joint distribution function of

X, Y and $=^d$ denotes equality in distribution. A similar theorem for counter-monotonicity follows.

Theorem 2: The pair $\langle X, Y \rangle$ is counter-monotonic if and only if one of the following equivalent conditions holds:

- (4) $(\forall x, y \in \mathbb{R}) [F_{X,Y}(x, y) = \max \{F_X(x) + F_Y(y) - 1, 0\}]$
- (5) For $U \sim \text{Uniform}(0, 1)$

$$\langle X, Y \rangle =^d \langle F_X^{-1}(U), F_Y^{-1}(1-U) \rangle$$

- (6) There exist a random variable Z , a non-decreasing function g and a non-increasing function h , such that:

$$\langle X, Y \rangle =^d \langle g(Z), h(Z) \rangle$$

In the following theorem we prove other criteria for comonotonicity and counter-monotonicity. We assume that the random variables X and Y are defined on the same probability space $\langle \Omega, \Sigma, P \rangle$, where Σ is the collection of all events in this space.

Theorem 3:

- 1) The pair $\langle X, Y \rangle$ is comonotonic if and only if there exists $B \in \Sigma$, such that $P(B) = 1$ and
- (7) $(\forall \omega_1, \omega_2 \in B) [X(\omega_1) < X(\omega_2) \Rightarrow Y(\omega_1) \leq Y(\omega_2)]$
- 2) The pair $\langle X, Y \rangle$ is counter-monotonic if and only if there exists $B \in \Sigma$, such that $P(B) = 1$ and

(8) $(\forall \omega_1, \omega_2 \in B) [X(\omega_1) < X(\omega_2) \Rightarrow Y(\omega_1) \geq Y(\omega_2)]$

Proof:

1) \Rightarrow Suppose $\langle X, Y \rangle$ is comonotonic. Then it has a comonotonic support A. Denote:

$$B = \{ \omega \in \Omega : \langle X(\omega), Y(\omega) \rangle \in A \}$$

Consider $\omega_1, \omega_2 \in B$ with $X(\omega_1) < X(\omega_2)$. This implies $Y(\omega_1) \leq Y(\omega_2)$, since both pairs $\langle X(\omega_1), Y(\omega_1) \rangle$ and $\langle X(\omega_2), Y(\omega_2) \rangle$ belong to A.

\Leftarrow Suppose there exists $B \in \Sigma$ of probability 1, such that the condition (7) holds. Denote:

$$A = \{ \langle X(\omega), Y(\omega) \rangle : \omega \in B \}$$

Then $P(\langle X, Y \rangle \in A) = P(B) = 1$, so A is a support of $\langle X, Y \rangle$.

Suppose $\langle x_1, y_1 \rangle \in A$ and $\langle x_2, y_2 \rangle \in A$. Then for some $\omega_1, \omega_2 \in B$, $x_1 = X(\omega_1)$, $y_1 = Y(\omega_1)$, $x_2 = X(\omega_2)$ and $y_2 = Y(\omega_2)$. By (7), $x_1 < x_2$ implies $y_1 \leq y_2$ and $x_1 > x_2$ implies $y_1 \geq y_2$. Hence A is comonotonic.

2) $\langle X, Y \rangle$ is counter-monotonic if and only if $\langle X, -Y \rangle$ is comonotonic. Hence part 2) of the Theorem follows from part 1)

Note: Clearly X and Y can be interchanged with each of the conditions (7) and (8).

Sometimes the condition (1) in Theorem 1 is taken as the definition for comonotonicity and the condition (4) in Theorem 2 for counter-monotonicity. The criteria in Theorem 3 are more suitable for the definitions of comonotonicity and counter-monotonicity, since they reflect their meaning and are similar to the definitions of increasing and decreasing functions.

In the case of continuous marginals F_X, F_Y , the second inequality in the formulas (7) and (8) can be made more strict. Also in the following two theorems the conditions (2), (3), (5) and (6) are made stronger (the proofs follow from Theorem 3).

Theorem 4: Suppose the marginal distribution functions F_X and F_Y are continuous. The pair $\langle X, Y \rangle$ is comonotonic if and only if one of the following equivalent conditions holds:

- $Y = F_Y^{-1}(F_X(X))$ with probability 1.
- There is a non-decreasing function g such that $Y = g(X)$ with probability 1.

Theorem 5: Suppose the marginal distribution functions F_X and F_Y are continuous. The pair $\langle X, Y \rangle$

is counter-monotonic if and only if one of the following equivalent conditions holds:

- $Y = F_Y^{-1}[1 - F_X(X)]$ with probability 1
- There is a non-increasing function h such that $Y = h(X)$ with probability 1

According to Theorems 4 and 5, in the case of continuous marginals, comonotonicity (counter-monotonicity) is equivalent to monotone increasing (decreasing) dependence defined by Kimeldorf and Sampson (1978), which was described in our introduction.

MONOTONICITY COEFFICIENT

We will fix a random variable U with the uniform distribution on (0, 1). For a random variable X with distribution function F_X denote:

$$X^* = F_X^{-1}(U) \text{ and } X' = F_X^{-1}(1-U)$$

By the quantile transfer theorem, $X^* \stackrel{d}{=} X$ and $X' \stackrel{d}{=} X$ (see Dhaene *et al.*, 2002).

Lemma 2: For the random variable Y and $\alpha, \beta \in \mathbb{R}$, the following holds:

- 1) $(Y + \alpha)^* = Y^* + \alpha$.
- 2) If $\beta > 0$, then $(\beta Y)^* = \beta Y^*$ and $(\beta Y)' = \beta Y'$.
- 3) If $\beta < 0$, then $(\beta Y)^* = \beta Y'$ with probability 1 and $(\beta Y)' = \beta Y^*$ with probability 1.

Lemma 2 follows from Lemma 1.

In the rest of the article we will consider only non-degenerate random variables with finite variances. The following theorem presents some well-known results (see, for example, Denuit and Dhaene, 2003) using the aforementioned notations.

Theorem 6: For the random variables X and Y the following holds:

- 1) $\langle X^*, Y^* \rangle$ is comonotonic and $\text{Cov}(X^*, Y^*) > 0$.
- 2) $\langle X^*, Y' \rangle$ is counter-monotonic and $\text{Cov}(X^*, Y') = \text{Cov}(X', Y^*) < 0$.
- 3) $\text{Cov}(X^*, Y') \leq \text{Cov}(X, Y) \leq \text{Cov}(X^*, Y^*)$.
- 4) $\langle X, Y \rangle$ is comonotonic $\Leftrightarrow \text{Cov}(X, Y) = \text{Cov}(X^*, Y^*)$.
- 5) $\langle X, Y \rangle$ is counter-monotonic $\Leftrightarrow \text{Cov}(X, Y) = \text{Cov}(X^*, Y')$.

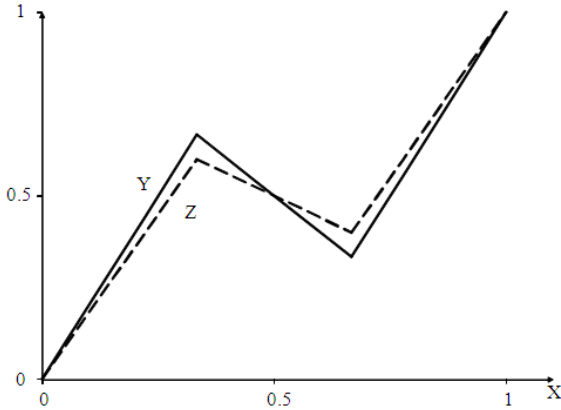


Fig. 1: Graphs for Example 1

The monotonicity coefficient ρ_m of random variables X and Y is defined by:

$$\rho_m(X, Y) = \begin{cases} \frac{\text{Cov}(X, Y)}{\text{Cov}(X^*, Y^*)} & \text{if } \text{Cov}(X, Y) > 0, \\ 0 & \text{if } \text{Cov}(X, Y) = 0, \\ -\frac{\text{Cov}(X, Y)}{\text{Cov}(X^*, Y')} & \text{if } \text{Cov}(X, Y) < 0. \end{cases}$$

The definition is valid due to Theorem 6.1), 2).

When the coefficient $\rho_m(X, Y)$ is closer to 1, then $\text{Cov}(X, Y)$ is closer to the covariance $\text{Cov}(X^*, Y^*)$ of a comonotonic pair, hence the pair $\langle X, Y \rangle$ is more comonotonic. Similarly, when the coefficient $\rho_m(X, Y)$ is closer to -1 , then $\text{Cov}(X, Y)$ is closer to the covariance $\text{Cov}(X^*, Y')$ of a counter-monotonic pair, hence the pair $\langle X, Y \rangle$ is more counter-monotonic. Thus, ρ_m can be used to measure the degree of monotonicity (monotone dependence) between X and Y .

Example 1: Suppose $X \sim \text{Uniform}(0, 1)$, $Y = g(X)$ and $Z = h(X)$, where:

$$g(x) = \begin{cases} 2x & \text{if } 0 \leq x \leq \frac{1}{3}, \\ 1-x & \text{if } \frac{1}{3} < x \leq \frac{2}{3}, \\ 2x-1 & \text{if } \frac{2}{3} < x \leq 1, \end{cases}$$

and:

$$h(x) = \begin{cases} 1.8x & \text{if } 0 \leq x \leq \frac{1}{3}, \\ -0.6x + 0.8 & \text{if } \frac{1}{3} < x \leq \frac{2}{3}, \\ 1.8x - 0.8 & \text{if } \frac{2}{3} < x \leq 1 \end{cases}$$

The monotonicity coefficients for these bivariate distributions are:

$$\rho_m(X, Y) = 13/10 \approx 0.7692 \text{ and } \rho_m(X, Z) = 293/261 \approx 0.8908.$$

So the second pair is more comonotonic, which is also obvious from the graphs in Fig. 1.

Theorem 7: Properties of the monotonicity coefficient: For the random variables X and Y the following holds:

- 1) $\rho_m(X, Y) > 0 \Leftrightarrow \rho(X, Y) > 0$, where $\rho(X, Y)$ is the Pearson correlation of X and Y .
- 2) $\rho_m(X, Y) < 0 \Leftrightarrow \rho(X, Y) < 0$.
- 3) $|\rho(X, Y)| \leq |\rho_m(X, Y)| \leq 1$.

The degree of linear dependence is not greater than the degree of monotone dependence.

- 4) $-1 \leq \rho_m(X, Y) \leq 1$.
- 5) $\rho_m(Y, X) = \rho_m(X, Y)$.
- 6) If X and Y are independent, then $\rho_m(X, Y) = 0$.
- 7) For any $\alpha \in \mathbb{R}$: $\rho_m(X + \alpha, Y) = \rho_m(X, Y)$.
- 8) For any $\beta \in \mathbb{R}$:
if $\beta > 0$, then $\rho_m(X, \beta Y) = \rho_m(X, Y)$;
if $\beta < 0$, then $\rho_m(X, \beta Y) = -\rho_m(X, Y)$.
- 9) $\rho_m(X, Y) = 1$ if and only if the pair $\langle X, Y \rangle$ is comonotonic.
- 10) $\rho_m(X, Y) = -1$ if and only if the pair $\langle X, Y \rangle$ is counter-monotonic.
- 11) If X and Y are PQD, then $\rho_m(X, Y) \geq 0$.
If X and Y are NQD, then $\rho_m(X, Y) \leq 0$.
- 12) If $\langle X_1, Y_1 \rangle$ is more PQD than $\langle X_2, Y_2 \rangle$, then $\rho_m(X_1, Y_1) \geq \rho_m(X_2, Y_2)$.

$$13) \rho_m(X, Y) = \begin{cases} \frac{\rho(X, Y)}{\rho(X^*, Y^*)} & \text{if } \rho(X, Y) > 0, \\ 0 & \text{if } \rho(X, Y) = 0, \\ -\frac{\rho(X, Y)}{\rho(X^*, Y')} & \text{if } \rho(X, Y) < 0 \end{cases}$$

Proof: 1)-10) follows from Lemma 2 and Theorem 6. 11) and 12) follow from the formula of Hoeffding:

$$\text{Cov}(X, Y) = \int_{-\infty}^{\infty} \int_{-\infty}^{\infty} [F_{X,Y}(x,y) - F_X(x) F_Y(y)] dx dy$$

13) Obvious.

The linear properties in Theorem 7.7), 8) are stated only for one argument but they also hold for the other argument due to symmetry.

Thus, the properties of the monotonicity coefficient ρ_m are similar to the properties of the Pearson correlation ρ but with respect to monotone dependence. The measure ρ_m is not entirely new. For PQD random variables X and Y , Reimann (1992) defined a measure λ^{**} by the formula:

$$\lambda^{**}(X, Y) = \frac{\int_{-\infty}^{\infty} \int_{-\infty}^{\infty} [F_{X,Y} - F_X F_Y] dx dy}{\int_{-\infty}^{\infty} \int_{-\infty}^{\infty} [\min(F_X, F_Y) - F_X F_Y] dx dy}$$

The coefficient ρ_m is a generalization of λ^{**} to any random variables with finite variances; for PQD variables X and Y , $\rho_m(X, Y) = \lambda^{**}(X, Y)$ by the Hoeffding formula. Reimann (1992) did not study the properties of λ^{**} except the property $\lambda^{**} \geq \rho$. He described λ^{**} as a measure of association of two random variables rather than a measure of monotone dependence. He defined λ^{**} in terms of double integrals and ρ_m has a simpler definition in terms of covariances.

COMPARISON TO OTHER COEFFICIENTS AND APPLICATIONS

The relation between ρ_m and ρ is described in the following theorem.

Theorem 8: Relation to the Pearson correlation: Suppose $\text{Cov}(X, Y) \neq 0$. Then:

$$\rho_m(X, Y) = \rho(X, Y) \Leftrightarrow$$

there exist numbers a and b , such that $Y =^d a + bX$.

In the following examples we compare the values of ρ_m and ρ for some bivariate distributions.

Example 2: Suppose the joint density function of X and Y is given by:

$$f(x,y) = \begin{cases} 2 & \text{if } 0 \leq x \leq y \leq 1, \\ 0 & \text{otherwise} \end{cases}$$

Then the monotonicity coefficient is:

$$\rho_m(X, Y) = \frac{2}{32 - 9\pi} \approx 0.5368$$

versus the Pearson correlation $\rho(X, Y) = 0.5$.

Example 3: Suppose $X \sim \text{normal}(0,1)$, $\varepsilon \sim \text{normal}(\mu, \tau)$, X and ε are independent and $Y = (X + \varepsilon)^3$. Then the monotonicity coefficient is:

$$\rho_m(X, Y) = \frac{1}{\sqrt{1 + \tau^2}}$$

As expected, the monotonicity coefficient decreases with increase of τ (the spread of the noise ε) and does not depend on μ (the constant shift of X).

The Pearson correlation is:

$$\rho(X, Y) = \frac{3(1 + \tau^2 + \mu^2)}{\sqrt{15(1 + \tau^2)^3 + 36\mu^2(1 + \tau^2)^2 + 9\mu^4(1 + \tau^2)}}$$

In the case when ε has the standard normal distribution ($\mu = 0, \tau^2 = 1$), the monotonicity coefficient is

$$\rho_m(X, Y) = \frac{1}{\sqrt{2}} \approx 0.7071 \text{ versus the Pearson correlation}$$

$$\rho(X, Y) = \frac{3}{\sqrt{30}} \approx 0.5477.$$

Example 4: Suppose X and ε are the same as in Example 3 and $Y = (\varepsilon - X)^3$. Then:

$$\rho_m(X, Y) = -\rho_m(-X, Y) = -\frac{1}{\sqrt{1 + \tau^2}}$$

Scarsini (1984) introduced some conditions for a measure of dependence of two random variables. Theorems 7 and 8 shows that ρ_m satisfies a reasonable modification of these conditions. In particular, if each of random variables X and Y has a normal distribution, then $\rho_m(X, Y) = \rho(X, Y)$ by Theorem 8.

One of the Scarsini's conditions is the invariance of a measure of concordance under increasing transformations of X and Y . This condition might be useful for a measure of general dependence but not monotone dependence, since the result of increasing transformations of two variables can get closer to or further from a monotonic relation than the original pair, i.e., increasing transformations can change the

degree of monotone dependence. The Pearson correlation does not satisfy this condition; it measures linear dependence, which is a particular case of monotone dependence. The Spearman, Kendall and Schweizer-Wolff coefficients satisfy this condition; they depend only on the ranks of the observations. The coefficient ρ_m is only invariant under changes of scale and location in X and Y . We believe that ρ_m is a more appropriate measure of monotone dependence of two variables and illustrate this with the following two examples.

Example 5. Table 1 defines random variables X , Y and Z on the sample space $\Omega = \{\epsilon_1, \epsilon_2, \epsilon_3\}$ with $P(\epsilon_k) = \frac{1}{3}$ ($k = 1, 2, 3$).

Since the pairs $\langle X, Y \rangle$ and $\langle X, Z \rangle$ have the same ranks, their Kendall coefficients are equal: $\tau(X, Y) = \tau(X, Z) = \frac{1}{3}$ and so are their Spearman coefficients:

$\rho_s(X, Y) = \rho_s(X, Z) = -\frac{1}{2}$. But the second pair is more counter-monotonic: it is closer to a decreasing relation as the graphs in Fig. 2 shows; this is reflected by its lower monotonicity coefficient:

$$\rho_m(X, Y) = -\frac{2}{3} \approx -0.667 \text{ and}$$

$$\rho_m(X, Z) = -\frac{10}{11} \approx -0.909$$

Example 6: Table 2 defines random variables X , Y and Z on the sample space $\Omega = \{\omega_1, \omega_2, \omega_3, \omega_4, \omega_5, \omega_6\}$

with $P(\omega_k) = \frac{1}{6}$ ($k = 1, 2, \dots, 6$).

Since the pairs $\langle X, Y \rangle$ and $\langle X, Z \rangle$ have the same ranks, their Kendall coefficients are equal: $\tau(X, Y) = \tau(X, Z) = \frac{11}{15}$ and so are their Spearman coefficients:

$\rho_s(X, Y) = \rho_s(X, Z) = \frac{31}{35}$. But the second pair is more comonotonic: it is closer to an increasing relation as the graphs in Fig. 3 shows; this is reflected by its higher monotonicity coefficient:

$$\rho_m(X, Y) \approx 0.766 \text{ and } \rho_m(X, Z) \approx 0.991.$$

The coefficient ρ_m can be applied to the problems where Y is a monotone function of X with a random

noise ϵ included; the monotonicity coefficient can be used to estimate some characteristics of the noise. It is natural to assume that ϵ has a normal distribution, as usual. The following two examples illustrate some cases when $\rho_m(X, Y)$ is used to estimate the variance and central moments of the noise. Clearly, ρ_m cannot be used to estimate the mean of ϵ , since this mean is a constant shift of X or Y and it does not affect the degree of their monotone dependence. In the following examples we also assume the normality of X or Y , which simplifies the calculations.

Example 7: Suppose $Y = g(X) + \epsilon$, where g is a monotone function, noise ϵ has a normal distribution with variance τ^2 , variables X and ϵ are independent and $g(X)$ has a normal distribution with variance β^2 . Then:

$$\rho_m(X, Y) = \frac{\beta}{\sqrt{\beta^2 + \tau^2}} \text{ if } g \text{ is increasing and}$$

$$\rho_m(X, Y) = -\frac{\beta}{\sqrt{\beta^2 + \tau^2}} \text{ if } g \text{ is decreasing.}$$

Table 1: Random variables X , Y and Z from Example 5

	ω_1	ω_2	ω_3
X	1	2	3
Y	2^{-1}	2^{-3}	2^{-2}
Z	10^{-1}	10^{-3}	10^{-2}

Table 2: Random variables X , Y and Z from Example 6

	ω_1	ω_2	ω_3	ω_4	ω_5	ω_6
X	1	2.000	3.00	4.00	5.00	6
Y	-1	0.199	-0.90	0.90	0.20	1
Z	-1	-0.010	-0.05	0.35	0.34	1

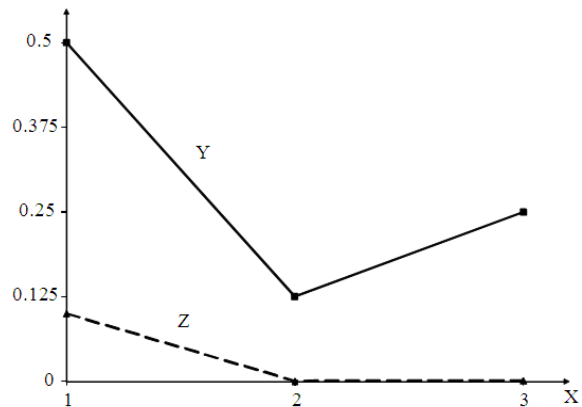


Fig. 2: Graphs for Example 5.

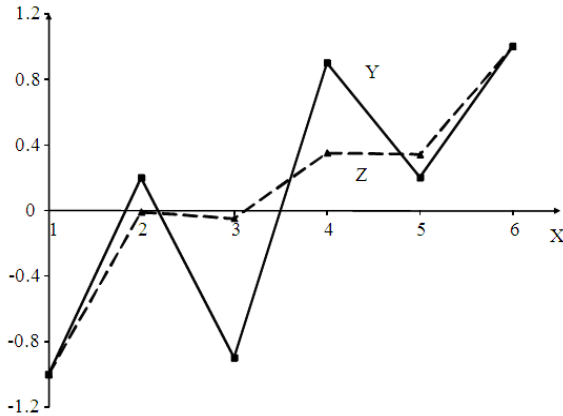


Fig. 3: Graphs for Example 6

The result holds for the particular case when $g(x) = \ln x$, so X has a lognormal distribution with the second parameter β . The following example is a generalization of Example 3.

Example 8: Suppose $Y = g(X+\epsilon)$, where g is a monotone function, noise ϵ has a normal distribution with variance τ^2 , variables X and ϵ are independent and X has a normal distribution with variance β^2 . Then

$$\rho_m(X, Y) = \frac{\beta}{\sqrt{\beta^2 + \tau^2}} \text{ if } g \text{ is increasing and}$$

$$\rho_m(X, Y) = -\frac{\beta}{\sqrt{\beta^2 + \tau^2}} \text{ if } g \text{ is decreasing.}$$

For the random variables from Examples 7 and 8, the variance τ^2 of the noise ϵ can be expressed in terms of the monotonicity coefficient $\rho_m = \rho_m(X, Y)$:

$$\tau^2 = \beta^2 \left(\frac{1}{\rho_m^2} - 1 \right)$$

Since ϵ has a normal distribution, this also defines its central moments:

$$\sigma_{2k} = \beta^2 \left(\frac{1}{\rho_m^2} - 1 \right) (2k - 1)!!, k = 1, 2, 3, \dots$$

Thus, in applications the monotonicity coefficient can be used to estimate the central moments of the noise.

The coefficient ρ_m naturally generates a monotonicity measure rm for a two-dimensional sample:

$$rm(x, y) = \begin{cases} \frac{s(x, y)}{s(x^*, y')} & \text{if } s(x, y) > 0, \\ 0 & \text{if } s(x, y) = 0, \\ -\frac{s(x, y)}{s(x^*, y')} & \text{if } s(x, y) < 0 \end{cases}$$

where $s(x, y)$ is the sample covariance, x^* is the sample x with its values in ascending order and y' is the sample y with its values in descending order. The properties of rm are similar to the properties of ρ_m . Details are given in (Kachapova and Kachapov, 2010).

CONCLUSION

This article introduced the monotonicity coefficient ρ_m , a new measure of the monotone dependence of random variables with finite variances. It was proven that ρ_m satisfies reasonable conditions for such a measure:

- ρ_m has linear properties
- it is invariant under changes of scale and location
- $\rho_m(X, Y) = 0$ for independent random variables X, Y
- $\rho_m(X, Y) = 1$ for a comonotonic pair X, Y
- $\rho_m(X, Y) = -1$ for a counter-monotonic pair X, Y

The coefficient ρ_m is a more sensitive measure of monotonicity than the coefficients depending only on the ranks of observations.

The sample version rm of the monotonicity coefficient was defined.

We recommend using ρ_m to compare pairs of random variables with respect to their degree of monotonicity. For example, in portfolio analysis the monotonicity coefficient can be used to assess the degree of increasing or decreasing monotone dependence between two asset returns and to do respective comparison of pairs of assets. In the problems where the monotone relation of two variables has a random noise, the coefficient ρ_m can be used to estimate variance and other central moments of the noise.

We recommend to use the sample monotonicity coefficient rm to find monotonic relationships in big datasets.

REFERENCES

- Bauerle, N. and A. Muller, 1998. Modeling and comparing dependencies in multivariate risk portfolios. *Astin Bull.*, 28: 59-76. DOI: 10.2143/AST.28.1.519079
- Dempster, M.A.H., 2002. Risk Management: Value at Risk and Beyond. 1st Edn., Cambridge University Press, Cambridge, ISBN-10: 0521781809, pp: 274.
- Denuit, M. and J. Dhaene, 2003. Simple characterizations of comonotonicity and countermonotonicity by extremal correlations. *Belgian Actuarial Bull.*
- Dhaene, J., M. Denuit, M. Goovaerts and R. Kaas, 2002. The concept of comonotonicity in actuarial science and finance: Theory. *Insurance: Math. Econ.*, 31: 3-33. DOI: 10.2139/ssrn.302322
- Kachapova, F. and I. Kachapov, 2010. Measuring monotony in two-dimensional samples. *Int. J. Math. Educ. Sci. Technol.*, 41: 418-427. DOI: 10.1080/00207390903477418
- Kimeldorf, G. and A.R. Sampson, 1978. Monotone dependence. *Annals Stat.*, 6: 895-903.
- Kimeldorf, G. and A.R. Sampson, 1987. Positive dependence orderings. *Ann. Instit. Stat. Math.*, 39: 113-128. DOI: 10.1007/BF02491453
- Rachev, S.T., 2003. Handbook of Heavy Tailed Distributions in Finance. 1st Edn., Elsevier, Amsterdam, ISBN-10: 0444508961, pp: 680.
- Reimann, J., 1992. Positively quadrant dependent bivariate distributions with given marginals. *Periodica Polytechnica, Civil Eng.*, 36: 407-420.
- Scarsini, M., 1984. On measures of concordance. *Stochastic*, 8: 201-218.
- Schweizer, B. and E.F. Wolff, 1981. On nonparametric measures of dependence of random variables. *Ann. Stat.*, 9: 879-885. DOI: 10.1214/aos/1176345528
- Tularam, G.A., E. Roca and V.S.H. Wong, 2010. Investigation of Socially Responsible Investment Markets (SRI) using Dynamic Conditional Correlation (DCC) method: Implications for diversification. *J. Math. Stat.*, 6: 385-394. DOI: 10.3844/jmssp.2010.385.394